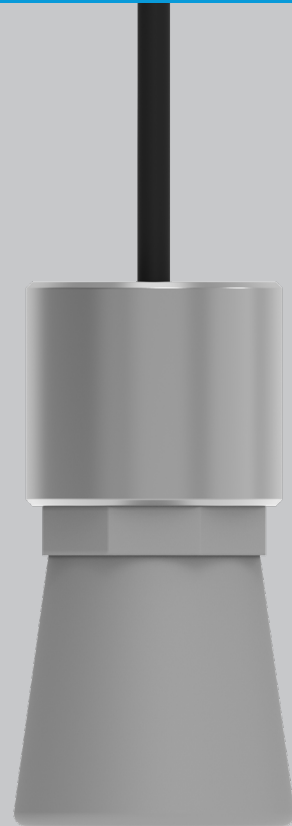




For help visit incyt by LX  
[incyt.io/support](https://incyt.io/support)

Copyright 2021 LX Corporation Pty Ltd. All rights reserved.

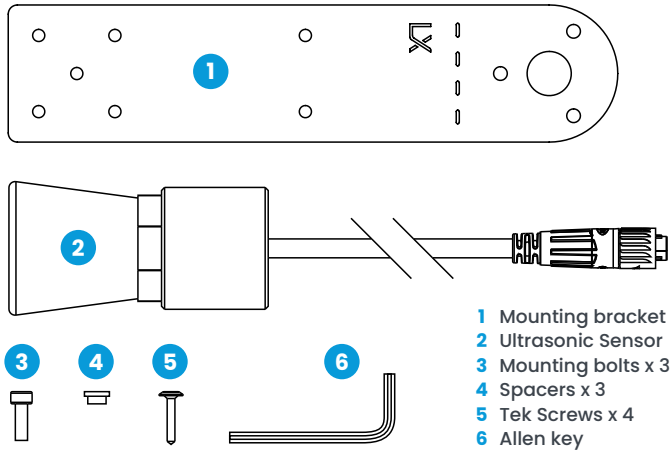


## Ultrasonic Level Sensor

Quick Start Guide



## Product Overview



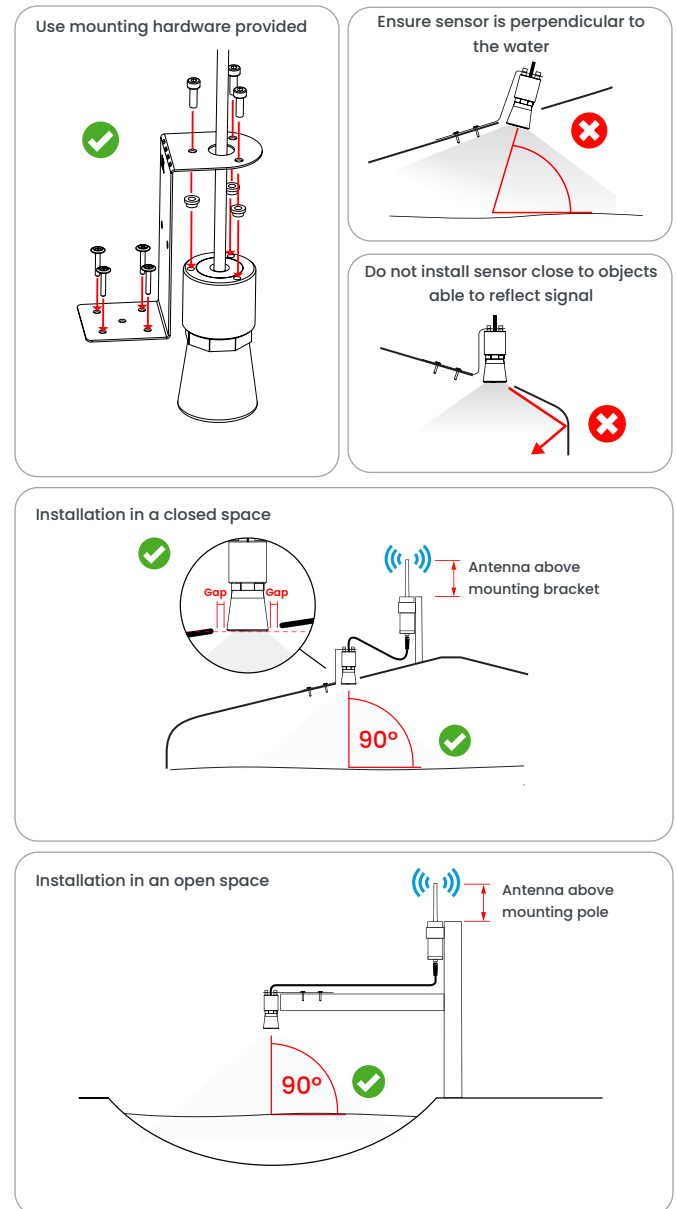
## Preparation

- 1 Unpack the contents of the box and check the component list above to ensure the kit is complete.
- 2 The Ultrasonic Sensor requires a LX Blue Node to function, available for purchase from [Incyt.io](https://www.incyt.io). Follow the instructions provided with the Blue Node to complete setup and activation.
- 3 Ensure all components are functioning correctly before proceeding to field installation.

## Installation and Mounting

- 4 Plan your installation considering the diagrams on the right.
- 5 Once the Ultrasonic sensor and Blue Node installation is complete, ensure that data is correctly reporting before leaving the site.

## Installation Tips



Protect cables from animals by purchasing sheathing from your local hardware store