



For help visit incyt by LX
incyt.io/support

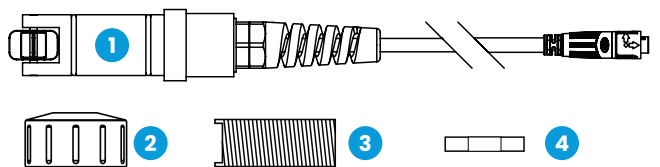
Copyright 2020 LX Corporation Pty Ltd. All rights reserved.



Flow Meter Sensor Quick Start Guide



Product Overview



- 1 Flow Meter Sensor
- 2 Holding Cap
- 3 1" BSP Thread Adapter
- 4 Locking Nut

Preparation

- 1 Unpack the contents of the box and check the component list above to ensure the kit is complete.
- 2 For installation, a tapping saddle with a 1" BSP threaded inlet will be needed to fit the pipe being monitored. These are available for purchase from Manuflo. Visit: www.manuelectronics.com.au
- 3 This Flow Meter Sensor requires a LX Blue Node to function, available for purchase from incyt.io. Follow the instructions provided with the Blue Node to complete setup and activation.

Installation and Mounting

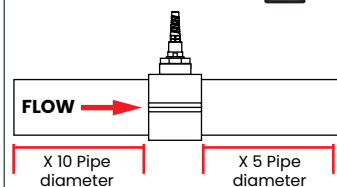
- 4 Turn off all pumps and remove the liquid from the pipe that is to be monitored.
- 5 Drill a 32mm hole in the pipe in the desired installation location, and attach the tapping saddle. Ensure the hole in the tapping saddle and pipe are aligned.
- 6 Screw the 1" BSP Thread Adapter into the tapping saddle until it protrudes approximately 10mm into the pipe. Tighten the Locking Nut to secure.

- 7 Insert the Flow Meter Sensor into the 1" BSP Thread Adapter, ensuring that the keys are aligned at the top and the paddle is facing the direction of flow. Tighten the Holding Cap by hand to secure.
- 8 Install the Blue Node according to its 'Quick Start Guide', and follow the instructions to plug the connector on the Flow Meter Sensor into the Blue Node.
- 9 Turn on pumps and check that data is reporting.

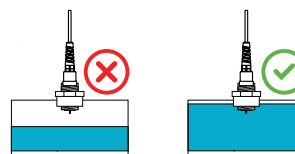


Protect cables from animals by purchasing sheathing from your local hardware store

IMPORTANT! ⚠️



A minimum of 10x pipe diameter before (upstream of) the sensor and at least 5x pipe diameter after sensor of straight pipe section must be fitted with no bends, reductions, enlargements, restrictions or valves to ensure accurate measurement.



Pipe must be full at all times for accurate measurement.

