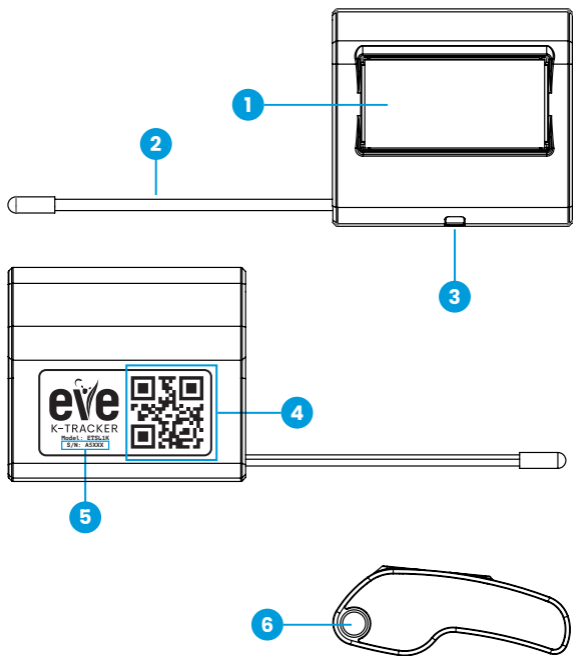


Cygni Tracker

Quick Start Guide

INCYT

Product Overview



1 Solar Panel

2 LoRa Antenna

3 LED / Magnetic Switch

4 Commissioning QR Code

5 Unique Serial Number

6 Attachment point

Start Here

- 1 Download the INCYT app through the App Store or Google Play Store on your mobile device, or visit **dashboard.incyt.io** on your web browser.



- 2 Create a new account or login with your existing account.

Device Registration

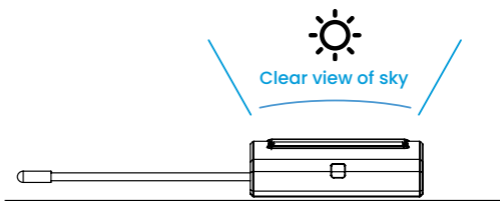
- 3 Register the device using the INCYT App. When instructed, scan the QR code on the rear of the device.
- 4 Add the appropriate Application within the INCYT App, and link the device.

Device Activation

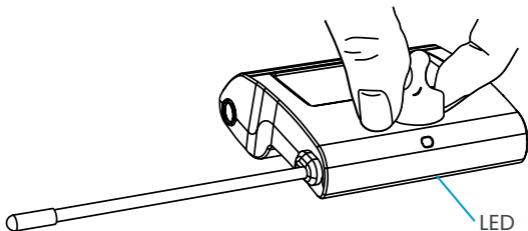
- 5 The device is delivered in a dormant state. Activate before use by following the steps below.

Ensure the device is placed:

- outside
- with an unobstructed view of the sky, and
- within range of a commissioned XR Base Station



- 6 When linking the device, hold the supplied magnet over the LED until the LED flashes white. This will wake the device.



- If the LED does not flash white, see the 'troubleshooting' section of this guide.
- 7 The device will then attempt to connect to the Incyt platform and send its GPS location to the dashboard. This can take up to 5 minutes.
 - If there is no GPS co-ordinate update on the dashboard within 5 minutes, see the 'troubleshooting' section of this guide.
 - 8 Check the device details on the Incyt App before deployment to ensure the battery is charged. The voltage must be greater than 3.2V.

The battery can be recharged by leaving the device in the sun until the voltage reaches 3.3V to 3.5V.

Device Installation

Before installing the device, consider the following important factors:

- **Orientation**

To maximise GPS accuracy, ensure the device has visibility of the sky with minimal obstructions during use.

- **Exposure to sunlight**

To maximise solar harvesting capacity, ensure the solar panel is clean and the device has access to sunlight throughout the day.

- **Temperature**

The maximum operational temperature range of this device is -10°C to $+80^{\circ}\text{C}$. To get the most out of your device, ensure it is operated between 0°C and 60°C .

- **Wireless network**

This device communicates with the Incyt platform via an XR Base Station. To maximise device data transmission reliability, ensure there is sufficient Base Station coverage within the areas of use.

Visit **incyt.io** for network planning strategy.

- **Mounting**

When mounting the device to an animal, thread the collar through the attachment hole on the side of the device. *Ensure collars have a safety release mechanism in order to prevent choking hazards / accidental strangulation.*

A dedicated Cygni collar with a release mechanism can be purchased from **incyt.com.au**

Safety and compliance

Ensure installation complies with all relevant local regulations and requirements.

This device should be operated with a minimum separation distance of 20 cm (8 inches) between the equipment and a person's body.

Do not disassemble, cut, drill, or modify the device in any way.

Troubleshooting

LED does not flash white

Slowly swipe the magnet along the front edge of the device until the LED blinks green.

LED flashes various colours or in a pattern

The device has already been activated.

GPS co-ordinates do not update on dashboard

Slowly swipe the magnet along the front edge of the device until the LED blinks green. Wait for up to 5 minutes and update the dashboard.

Device reset

Hold the magnet over the LED until the LED starts blinking a pink colour.

Further installation, activation and troubleshooting information is available at incyt.io/support

INCYT

For help visit INCYT

incyt.com.au