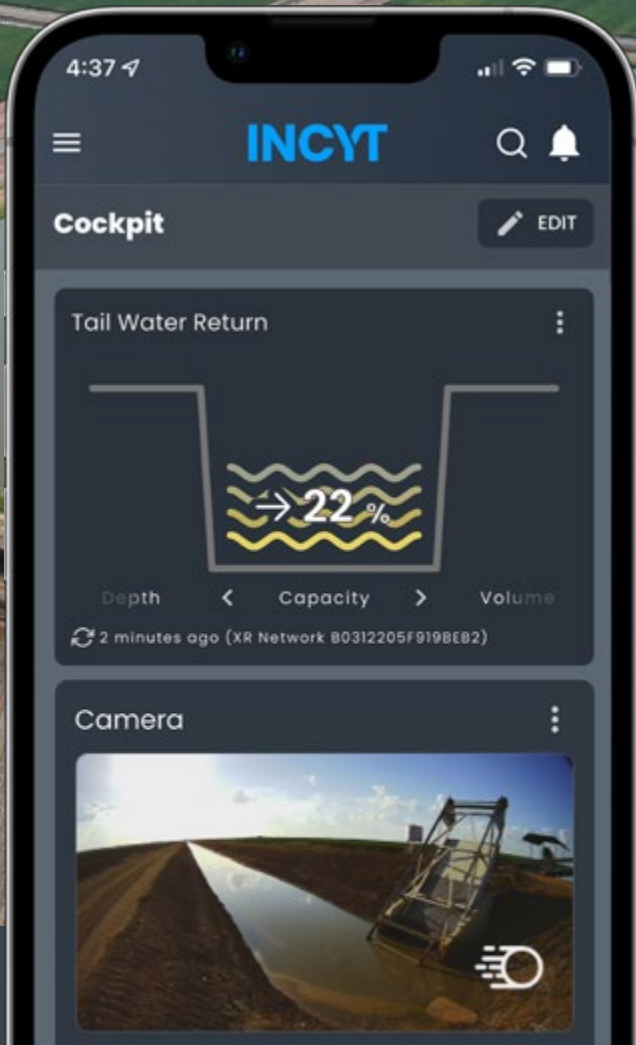
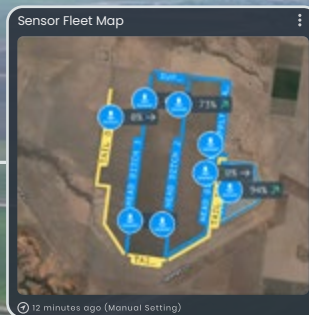
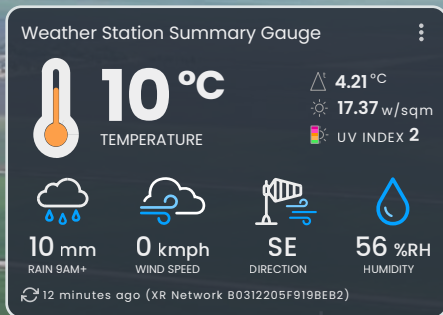


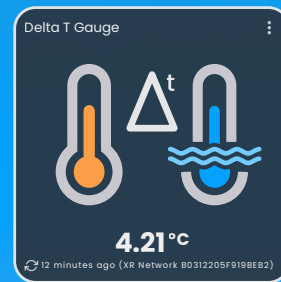
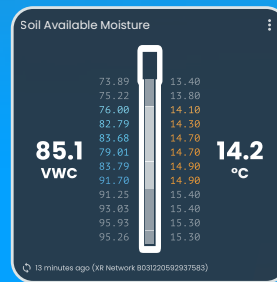
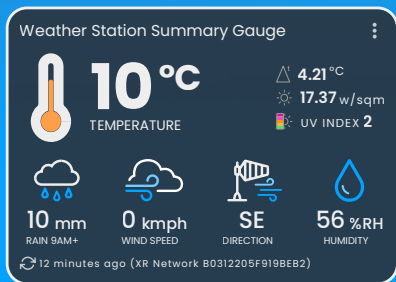
INCYT

Product Catalogue

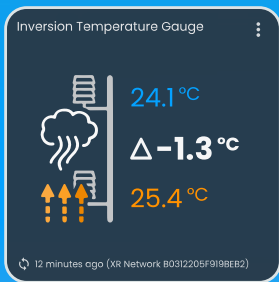
Winter 2024



Technology that powers better farming decisions



- + Drive increased productivity and profitability on your farm
- + Reduce risk and gain more control of your property with remote tracking and sensing
- + Get more time back and make the right decisions at the right time



Product Feature Icons Key 6

The INCYT Process 8

Smart Farming with INCYT..... 10

INCYT Blue Node Telemetry Device..... 12

XR Network 14

XR Network Kits 16

THE INCYT ADVANTAGE

Reporting with INCYT 20

INCYT Cockpit View..... 20

INCYT Map View 20

INCYT Protect 30

PRODUCTS

SOIL MOISTURE MONITORING

AquaCheck® Soil Moisture Probe 800mm 34

Sentek 100mm single point Soil Moisture Probe .. 35

EnviroPro® Soil Moisture Probe 800mm 36

EnviroPro® Soil Moisture Probe 1200mm ★ 37

Sentek 600mm Soil Moisture Probe 38

Sentek 900 mm Soil Moisture Probe ★ 39

Sentek 1200 mm Soil Moisture Probe 40

WATER MONITORING

Water EC/Salinity Sensor 41

Water pH Sensor 42

Leaf Wetness Sensor..... 43

Water Presence Sensor ★ 44

Water Level Monitor Ultrasonic ★ 45

Dam and Reservoir Water Availability..... 46

Channel and Ditch Monitor ★ 47

Stub and Return Drain Monitor..... 48

River and Creek Level 49

Titanium (anti-corrosive) Level Monitor (hydrostatic) ★ 50

Flood Fence Sensor 51

IRRIGATION MONITORING

Water Flow Rate 52

Drip Line Pressure Monitor 53

Pipe Pressure Monitor ★ 54

Irrigation Pressure Monitor..... 55

Basic Pump Monitor..... 56

Advanced Pump Monitor 57

Irrigation Motion Detection System Standard..... 58

Irrigation Motion Detection System Pro..... 59

Pump Runtime Sensor 60

Pump Monitoring and Control..... 61

WEATHER MONITORING

Weather Station ★ 62

Temperature and Humidity Sensor 64

Rain Gauge Standard ★ 65

Rain Gauge Pro..... 66

Case Study 67

SPRAY ADVISORY + INVERSION MONITORING

Spray Advisory System Standard ★ 68

Inversion Risk Detection Kit..... 70

MICROCLIMATE MONITORING

Frost Detection System Standard (Portable)★ .. 72

Portable Hay Baling Advisory Standard ★ 73

Hay Storage Monitoring System ★ 74

Industrial Temperature Probe (low temp) 76

Industrial Temperature Probe (high temp) 77

FARM INFRASTRUCTURE

Camera..... 78

Gate Status..... 79

Road Crossing Detection 80

Ramp Crossing Detection..... 81


Door Status 82

Fuel Level Monitor (hydrostatic)..... 83

INCYT Track

Antares LTE-M Tracker + Gateway..... 88

Antares LTE-M Tracker + Gateway
with Advanced Sense..... 89

Polaris LTE-M Battery Powered Tracker  90

Polaris LTE-M Battery Powered Tracker
with Advanced Sense..... 91

Lyra Bluetooth, Battery Powered Tracking
Beacon 92

Lyra Bluetooth, Battery Powered Tracking
Beacon with Advanced Sense 93

Andromeda LTE + Satellite Battery
Powered Tracker 94

SERVICES

INCYT Stream..... 98

INCYT Platform Training Session 100


Site Network Modelling and Connectivity
Planning Session 100

Installation Design and Rollout
Planning Session 100

On Farm Smart Farm Consultation
and Site Survey 101

Smart Farm Design Service..... 101

INCYT Dashboard Set-up and Configuration
Service 101

 Indicates Most Popular Products

Product Feature Icons Key

The icons below highlight the key features and details of products, and help you to easily navigate the INCYT Catalogue



BLE
Device utilises BLE
(Bluetooth Low Energy)



XR2 BLE Listening Range Extender
Device is compatible XR2 BLE gateway



Specialist Installation
Requires an INCYT trained Installer
to get you up and running



Solar Powered
Device can be powered by an
external solar powered kit



Track
Geolocation tracking of asset



Mains Powered
Device can be powered by
mains power supply



Track + Sense
Geolocation tracking plus sensing, e.g.
temperature and humidity reporting



Plug n' Play
Minimal setup required. These devices are
out-of-the-box, Plug n' Play compatible



INCYT Partner
Approved INCYT partner



Built To Last
Designed and manufactured to operate
in the harshest field conditions



XR
Device is compatible with the long
range, low power XR Network



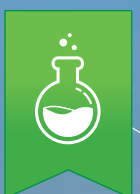
LoRaWAN Connectivity
Device can connect using an available
LoRaWAN network



Discovery + Learning
INCYT explainer guides and
resources available



Scan n' Play
Open the box, scan the device and be up and
running quickly with reporting to the INCYT App



INCYT Labs
Approved INCYT Pilot Program Product



Most Popular Products
An INCYT best seller

To View Online



Scan the QR code to view a digital copy of this catalogue. All pages of the digital catalogue, have links to each product online.

XR Network Kit
SKU: KT-A-0055 | SKU: KT-A
[VIEW ONLINE](#)

INCYT XR Network

XR Network Kits

Combine the benefits of LoRaWAN, LTE-M and NB-IoT in one powerful package.

Reduce the need for third party network providers and take control of your operations network connectivity by deploying XR across your property. With the ability to connect hundreds of sensors, and the potential for users to decide when and where across their operation they want connectivity, it's no surprise that the XR Network is our recommended network option for all farmers.

The XR Network has an option for on-sell access to your neighbouring properties, meaning you can securely share your network with your neighbours if desired.

Installation guide included.

XR from INCYT

- Enables reliable connectivity for numerous devices in the INCYT range, everything from tank monitors and soil moisture probes to advanced spray advisory kits
- Connect hundreds of devices to one XR kit - various subscription plans available
- Accessories for high gain installation on properties with undulating terrain or dense foliage
- Ultra long range network deployment up to 15KM (depending on conditions)
- Multiple power options for solar kit in remote areas and mains power for farmstead installation
- Xtreme Range kit option available for larger network provision.

The INCYT Process

We work with producers to understand not just what they can and want to monitor, but what their challenges or opportunities are. We then architect a plan and a design that meets individual needs to make sure you get the best out of our technology.





1. Discovery

We take you through how the technology works, and how it can help manage the level and cost of production on your farm.



2. Consultation

We provide a 1-to-1 consultation to understand your needs, pain points and the goals specific to your property.



3. Tailored Plan

We'll work with you on a tailored plan for your property and suggest products and systems that will help you achieve your goals.



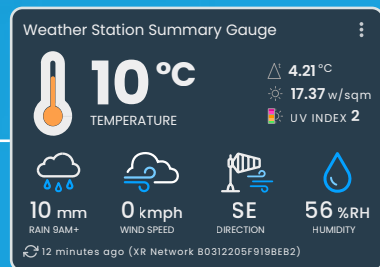
4. Onboarding/Installation

We take the hassle out of deploying AgTech systems, creating a seamless installation process.



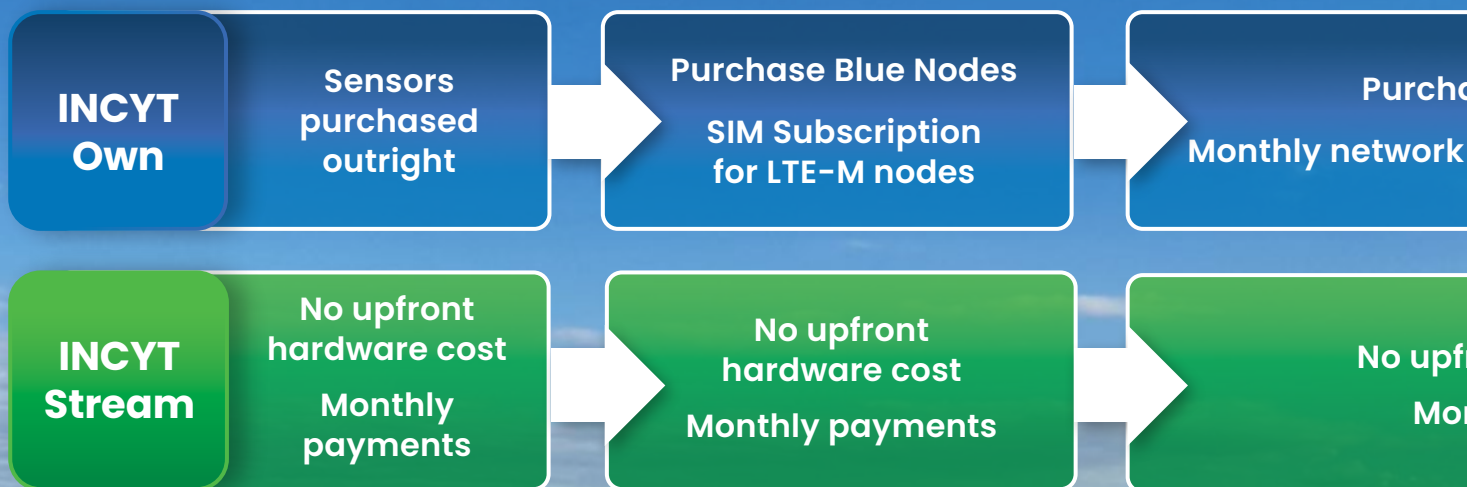
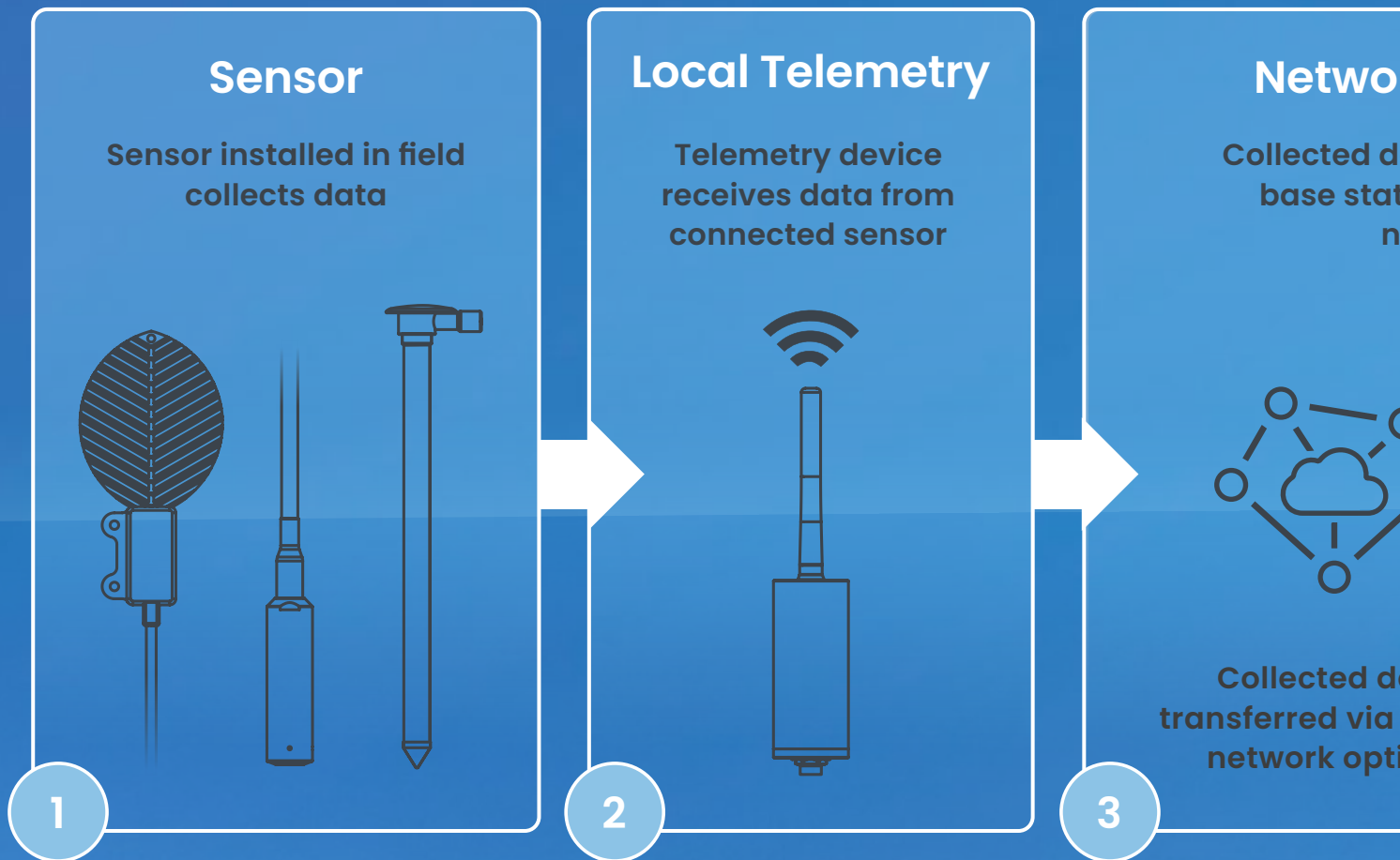
5. Post Install Evaluation

We continue to work with you to ensure you get the best out of our technology once it's installed.



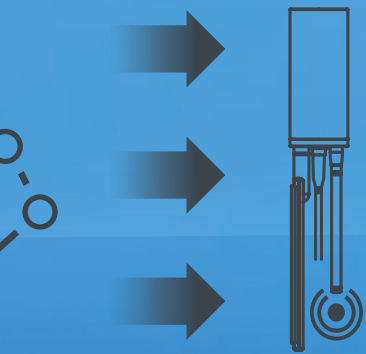
Smart Farming with INCYT

How it works



Network Connectivity

Data transferred to INCYT
via best available
network option



Data
secure
ions

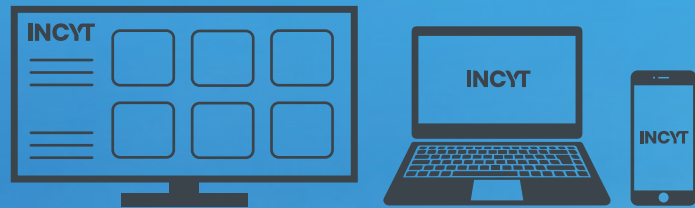
INCYT base station,
installed on your
property

Reporting

INCYT phone or web app

Data is analysed and displayed on
the INCYT dashboard, accessible on
TV, laptop or mobile device.

Operational alerts and notifications
are sent as required.



4

Base XR Base Station
subscription per Base Station

Monthly Reporting
Subscription

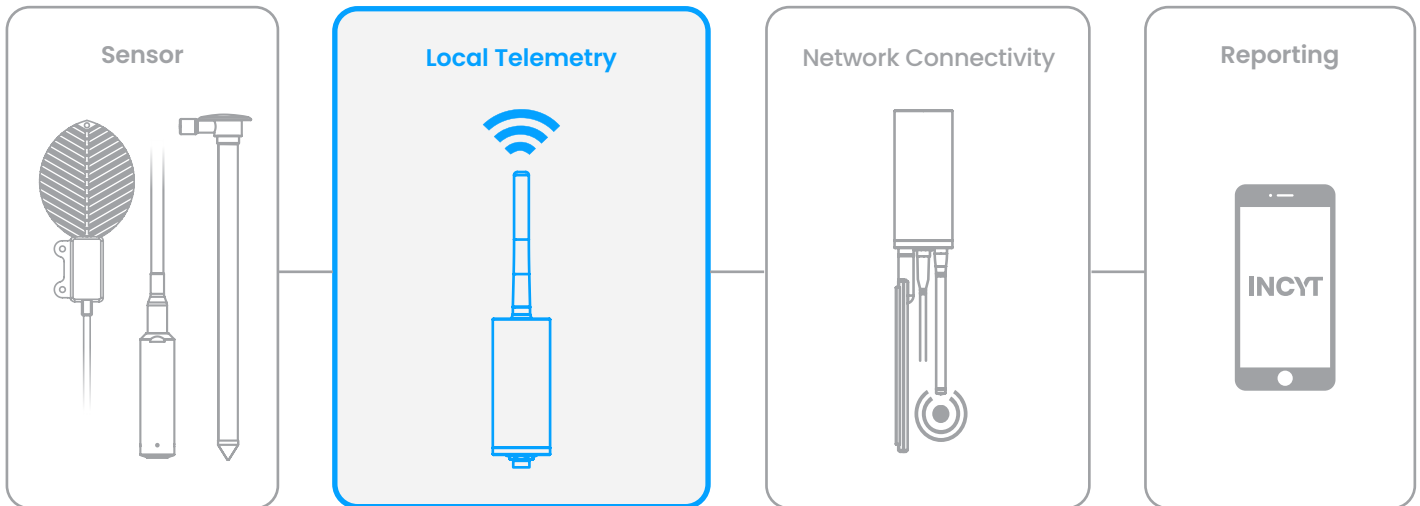
Front hardware cost
monthly payments

Monthly Reporting
Subscription



INCYT Blue Node Telemetry Device

SKU: KT-A-0045



INCYT's very own telemetry device

The Blue Node is the heart of the INCYT product ecosystem. It provides power to sensors and enables the communication between a sensor and the INCYT App (dashboard).

The Blue Node is a telemetry device that automatically collects, transmits and measures data from remote sources. The Blue Node wirelessly transmits over ultra long distances to strategically deployed network gateways.

How it works

The Blue Node is incredibly flexible and can connect to a wide range of agricultural and industrial sensors. The connection between a blue node and sensor is made via INCYT's custom **Plug n' Play** setup. Once set up, the sensor (or sensors) can simply be connected to the INCYT App (dashboard) by scanning the connected Blue Node's QR code - a process known as **Scan n' Play** (see page 20).



Highly versatile, award-winning AgTech IoT Telemetry Node for connecting Smart Sensors to the INCYT Dashboard

Built to last, the Blue Node is milled out of a solid block of aluminium with a **battery life of up to 10 years**. The device is designed to support a comprehensive sensor range.

This award winning, multipurpose telemetry device connects Smart Sensors to the INCYT Dashboard for accurate and reliable reporting straight to your phone, tablet or computer. It truly is the heart of the INCYT product ecosystem.

Data visualisation provided by INCYT Dashboard. Installation guide included.

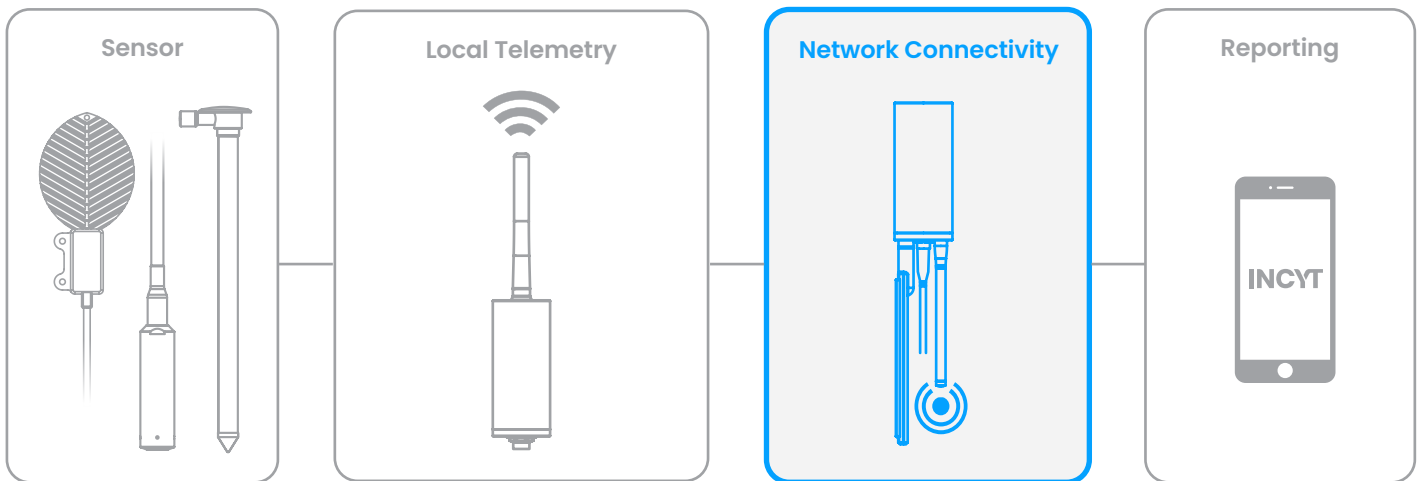
- Battery powered, up to 10 years battery life (depending on sensor and configuration)
- Recommended temperature range: -5°C to 45°C
- Long range performance (up to 15km, depending on conditions)
- LoRaWAN TTN & NNNCo connectivity
- Cellular connectivity via the XR Base Station for areas without LoRaWAN connectivity
- Easy installation - Plug n' Play sensor connection
- Smart Sensor enabled - automatic sensor configuration
- Highly ruggedised and weather proof for long term operation in harsh environments



ACTUAL SIZE



XR Network



INCYT's complete connectivity solution

The XR Network is INCYT's complete solution to a common IoT connectivity problem faced by primary producers. The XR Network **gives producers the power to deploy their own on-farm network**, rather than relying on third party rollouts and installations.

The XR Network is our premium choice when it comes to on-farm connectivity, as it **combines the benefits of LoRaWAN, LTE-M and NB-IoT in one powerful package**. The XR network kit unlocks lower power consumption, increased data bandwidth, and more flexible deployment options, even for those on the fringe of LTE networks, or with challenging terrain.

Setting up your own secure on-farm IoT network has never been easier

The XR Network is deployed through the installation of the INCYT Base Station. Designed and built to last in a variety of harsh environments, the XR Network is easily deployed anywhere on your farm. **It is the ultimate in long range, secure, private networks.**

The XR network gives producers the opportunity to have a fully featured smart farm by providing a high performance private network, capable of supporting hundreds of sensors all communicating at once at a range of up to 15 km from the base station, depending on conditions.

With an easy **plug n' play installation**, you can be up and running in minutes, eliminating the dependency on long-awaited network rollouts, supply, or maintenance from other third party network providers.



Active XR Network

The piece of infrastructure you may be missing to support a fully featured smart farm

With your own XR network, you will have:

1. Strong signal strength, allowing total control to solve network coverage gaps on your farm
2. Access to low latency (the delay in data transfer) and high reporting rates
3. The bandwidth you need to support the full range of AgTech sensor types (because you won't need to share this network with others)
4. LTE-M backhaul
5. Reliable downlink capability to control and automate aspects of the operation
6. Maximum power efficiency to achieve ultra-long battery life for your sensors
7. The ability to integrate with other network options you may have available on your site.



XR Network Kits

Combine the benefits of LoRaWAN, LTE-M and NB-IoT in one powerful package.

Reduce the need for third party network providers and take control of your operations network connectivity by deploying XR across your property. With the ability to connect hundreds of sensors, and the potential for users to decide when and where across their operation they want connectivity, it's no surprise that the XR Network is our recommended network option for all farmers.

The XR Network has an option for on-sell access to your neighbouring properties, meaning you can securely share your network with your neighbours if desired.

Installation guide included.

XR from INCYT

- Enables reliable connectivity for numerous devices in the INCYT range, everything from tank monitors and soil moisture probes to advanced spray advisory kits
- Connect hundreds of devices to one XR kit - various subscription plans available
- Accessories for high gain installation on properties with undulating terrain or dense foliage
- Ultra long range network deployment up to 15KM (depending on conditions)
- Multiple power options for solar kit in remote areas and mains power for farmstead installation
- Xtreme Range kit option available for larger network provision.

Network range	Up to 15 km (depending on conditions)
Enclosure	IP67, milled out of a solid block of aluminium
Advanced functionality	Edge processing capable
Temp range	-10°C to +60°C recommended (max. range -20°C to +80°C)
Software	OTA software updates
Backhaul	LTE-M
Power source	USB-C mains adaptor or Solar Kit



Solar Powered

SKU: KT-A-0055

Recommended for those installing a network without close access to a mains power supply

Base Station + Solar Kit + YOUR SELECTED PLAN

Mains Powered

SKU: KT-A-0056

Recommended for those installing a network with close access to a mains power supply

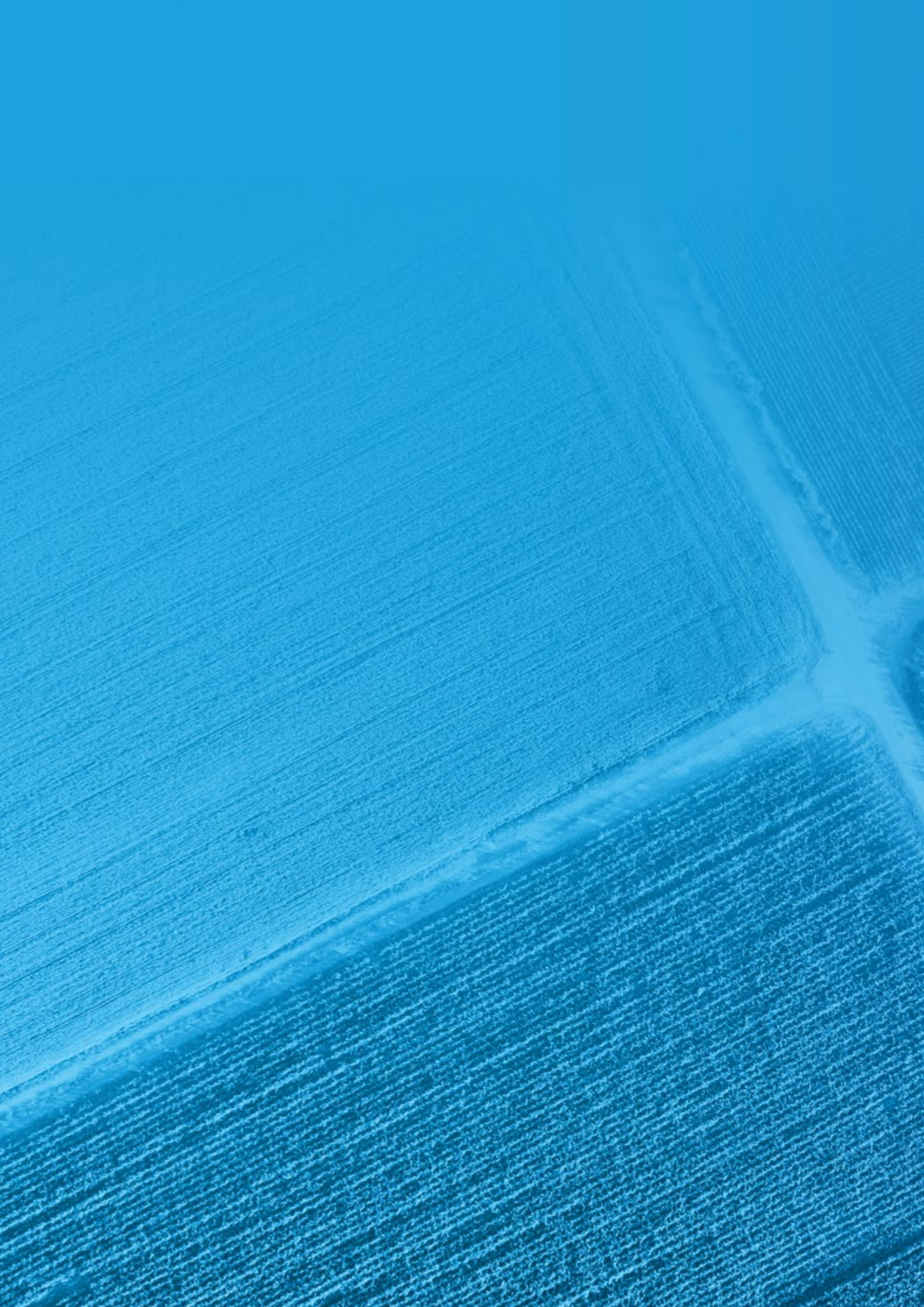
Base Station + Chogori to USB-C-2 + YOUR SELECTED PLAN

Xtreme Range

SKU: KT-A-0107

Recommended for those installing a network in highly remote areas requiring larger network provisions

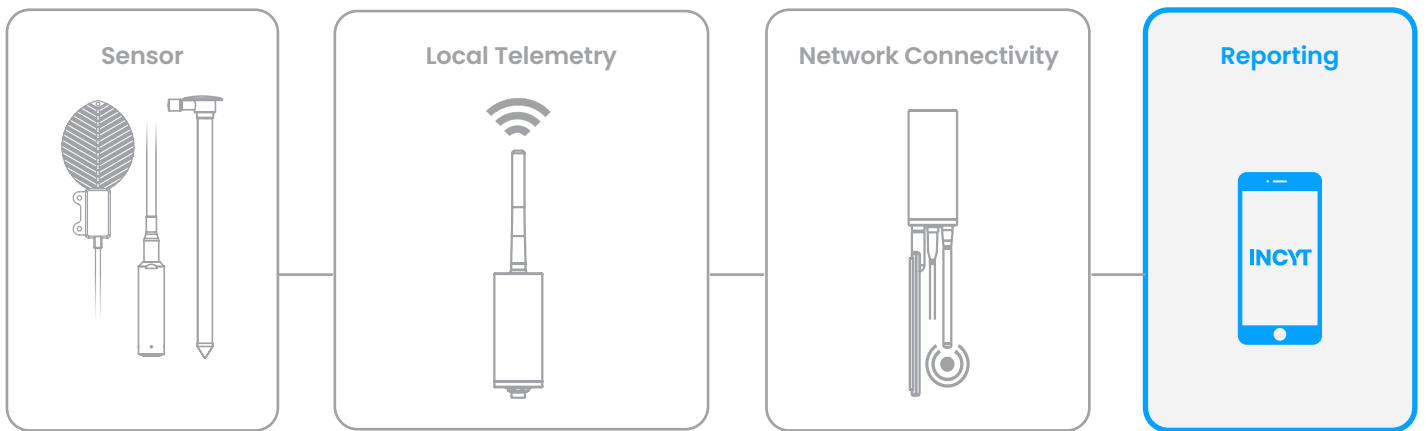
Base Station + Solar Kit + High Gain 915 MHz Antenna + High Gain 4G LTE Global Antenna + YOUR SELECTED PLAN + MOST POPULAR



The INCYT Advantage

INCYT

Reporting with INCYT



The INCYT App allows you to **analyse data from your on-farm sensors**, giving you a custom view of all your important metrics at a glance. The App is free to download and is used to visually display your sensor data in one user-friendly dashboard.

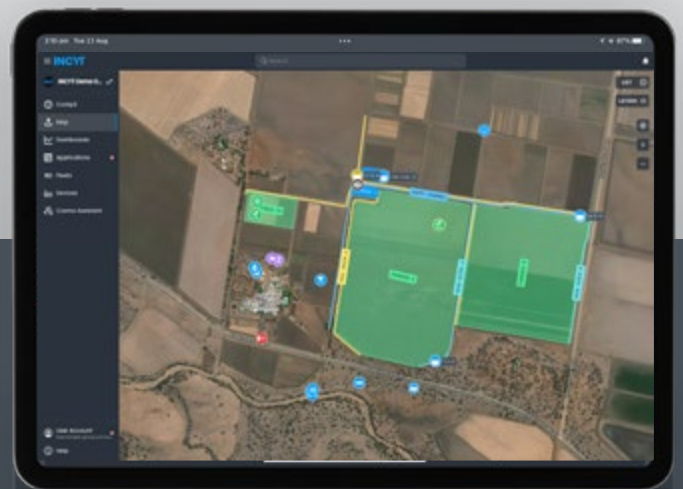
The INCYT App puts **your farm in your pocket**. With on-farm sensors easily connected to your ready-made profile through our Scan n' Play setup (see page 20), you'll be up and running in no time. With the ability to have multiple user accounts within one organisation, the App is suitable for operations of all sizes - whether you're a family run farm, or a large scale corporation.

The INCYT App allows you to have a **customised dashboard** made up of reports and metrics specific to your sensors. Providing you with actionable data, delivered to your smartphone, laptop or tablet.



INCYT Cockpit View

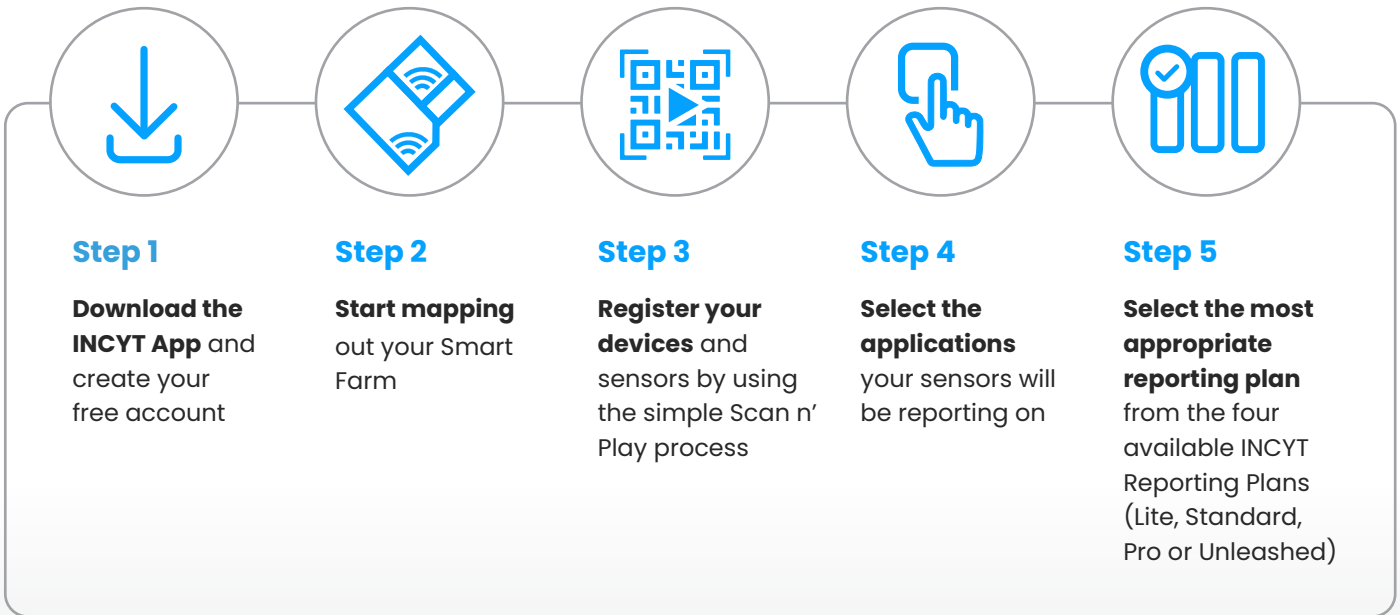
Information from your fields, as well as farming and irrigation assets, is gathered and consolidated through our proprietary data network, and displayed in the INCYT Cockpit, a dashboard available on any digital device, anywhere, anytime.



INCYT Map View

Beside the 'dashboard view' you can also opt for the 'map view' of your INCYT information. You'll see all your assets, including vehicles that are equipped with trackers, displayed on a map. This allows you to click on any asset on your farm and immediately be presented with its critical information

Getting Started with the INCYT APP



Connecting to the INCYT Dashboard

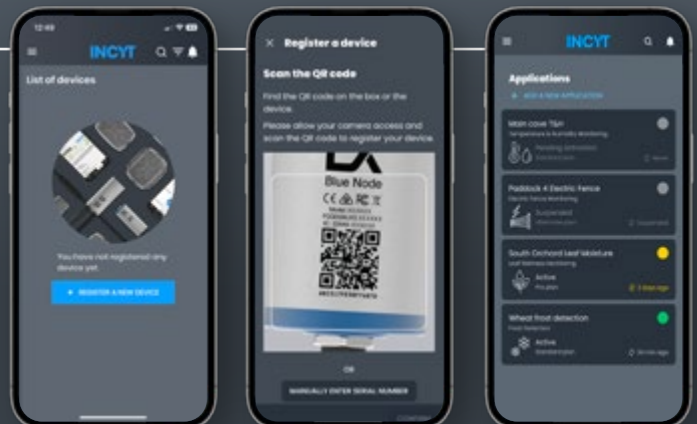
Register your device(s) with INCYT and configure in minutes using the simple Scan 'n Play setup.

INCYT devices come with a unique QR code, ready to be connected to a users account. Simply use your smart device to scan the QR code (or input attached code), select your configuration by choosing your relevant Application and the plan most suited for your reporting needs, and then connect your organisation. Once complete, you'll be able to see connected devices and their respective reporting data on your personalised INCYT dashboard.



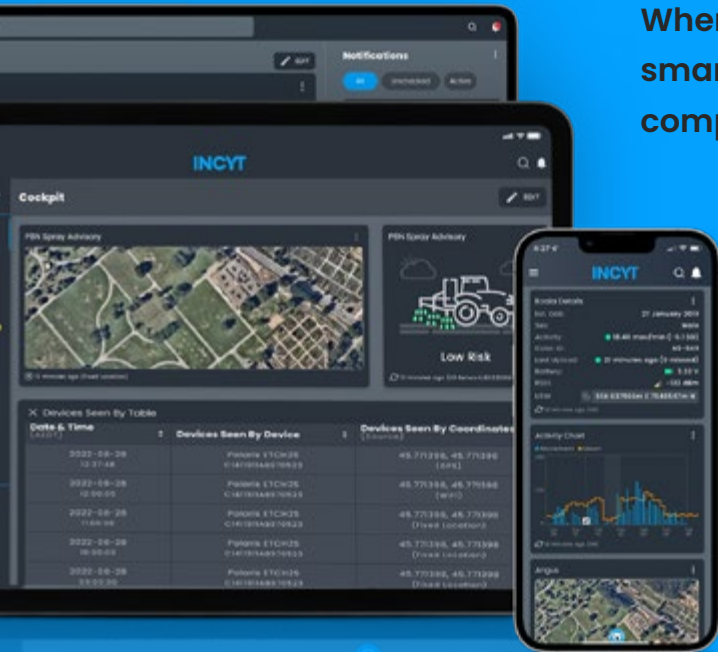
Scan n' Play

- 1 Open the INCYT APP
- 2 Scan your device's QR code to register
- 3 Select the Application you require and choose your plan
- 4 Install the device where required



1 App, 1 Dashboard, Unlimited Insights

Wherever you are, see what's happening on your smart farm at a glance - on your phone, tablet or computer with the INCYT app.



- + Intuitive, easy to use reporting dashboards and widgets
- + Configure your reporting dashboards and screens to suit your requirements
- + Alerts through email and/or SMS to your device for applications with predefined parameters e.g. Tank Monitoring
- + See historical data at a glance and obtain insights over time.

INCYT Reporting Plans

Choose the plan for your kit that works best for your reporting needs. And if you need to switch it, just make the change through the app - you're in control with INCYT.

	Lite	Standard	Pro	Unleashed
Replace manual checking	✓	✓	✓	✓
Unlimited data retention		✓	✓	✓
Customisable alerts		✓	✓	✓
High frequency updates			✓	✓
Mandatory external power source				✓

**Plans are Application specific - meaning plans change based upon the Application required. Details on pricing and reporting specifics are available on the INCYT App.

With INCYT's 80+ applications, view and monitor your most important field aspects



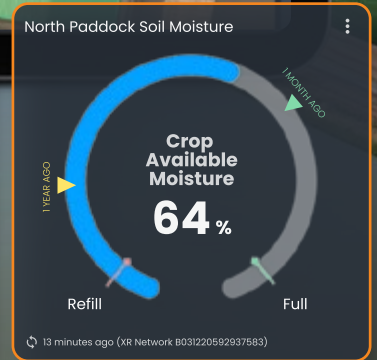
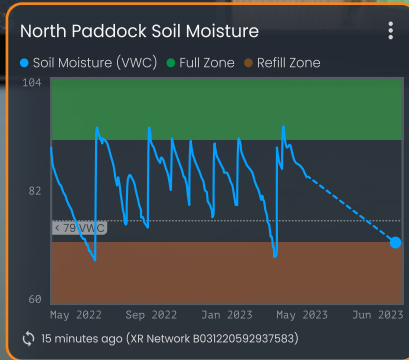
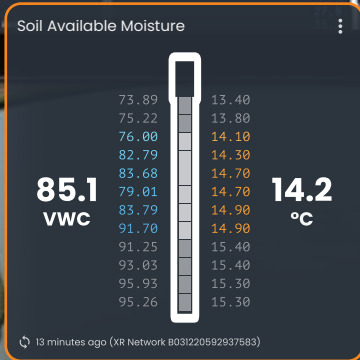
ALERT: Tail Water Return
has recorded a **fill-level of 14%** which is **below the 15% alarm threshold**
2:17am

ALERT: Tail Water Return
has recorded a fill-level of 14% which is below the 15% alarm threshold



Soil Moisture Monitoring

INCYT helps you manage your irrigation schedule with precision multilevel soil moisture and temperature profiles. Optimised irrigation timing results in optimised water usage and maximised yields. We support a range of probe lengths from EnviroPro and Sentek. You no longer need a different app or web page to view this information, but instead can view all of it on your INCYT dashboard together with data from your other devices.





Flood Irrigation Monitoring

INCYT helps you know your water level in any kind of open environment such as dams, channels and creeks. Our non-contact gauges measure the distance to the water surface with ultrasonic technology and can be used with flexible mounting solutions. INCYT's flood irrigation monitoring accurately monitors critical water levels, reducing trips around your farm just to check water. Free up your time for higher value tasks and more hours at home.

These sensors' reporting frequency can be customised to the needs of where it is deployed; you can also configure custom sms alerts when certain levels are met. View trends in one simplified map view. No more comparing screen shots or hand written notes.

The dashboard displays the following data for 'Head Ditch A':

Date & Time	Trend	Capacity (%)	Depth (m)	Volume (L)
2024-02-08 11:51 PM	→	4	0.03	
2024-02-08 11:52 PM	→	4	0.03	
2024-02-08 11:53 PM	→	4	0.03	

The 'Sensor Fleet Map' inset shows the following sensor data:

Sensor Name	Capacity (%)
SENSOR 1	73%
SENSOR 2	94%

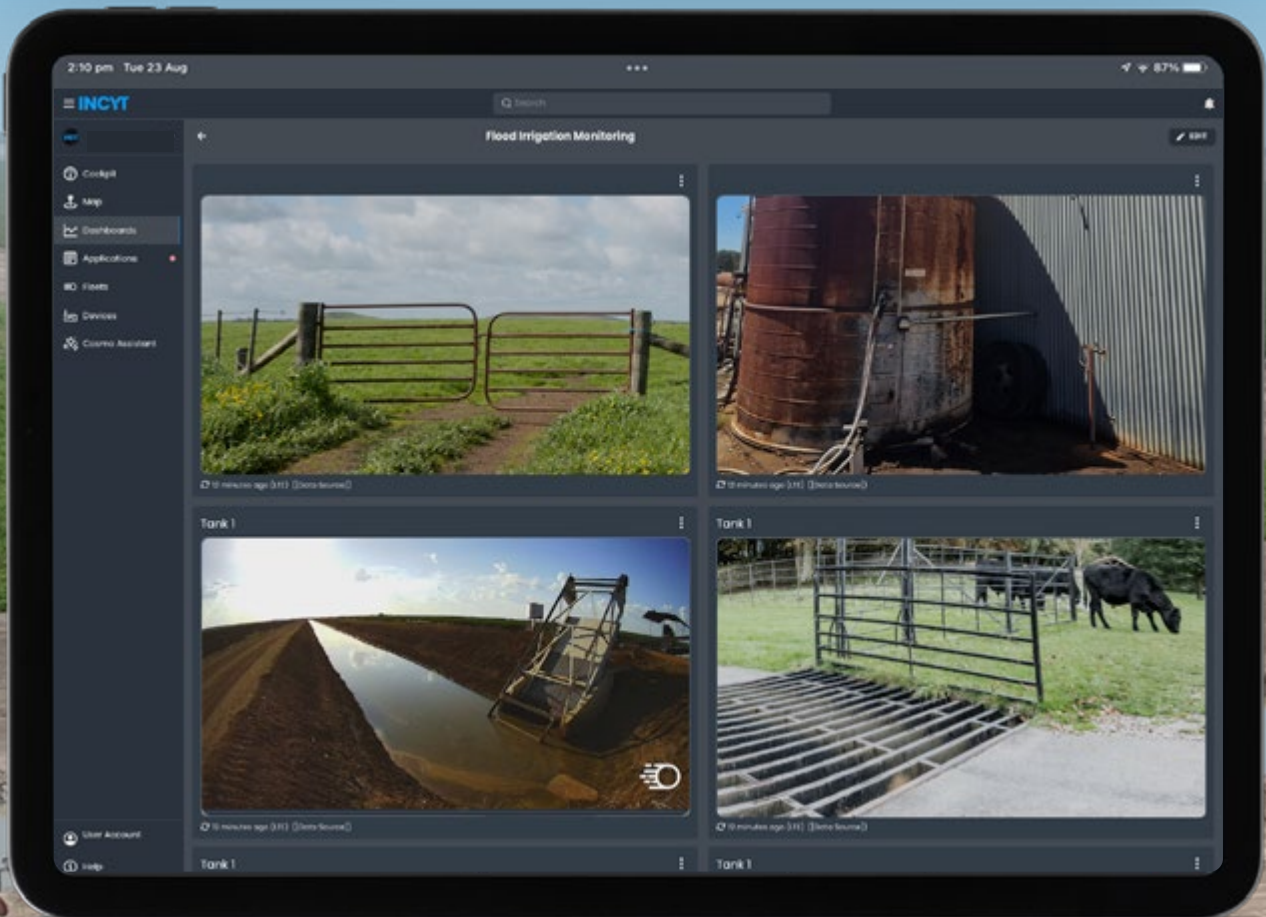
The 'TWR' inset shows a water level gauge with a 30% capacity reading and a timestamp '12 minutes ago (XR Network B0312205F919BEB2)'.



Camera Monitoring

INCYT helps you visually monitor key parts of your property and operation. The camera is solar-powered, allowing for flexible deployment throughout your farming operation. Receive notifications when the camera is triggered by movement. Camera can be set to frequent images or set to only when triggered by movement. Ideal for getting eyes on trash racks, gates, fuel tanks, and more. Set up INCYT cameras to monitor:

- Entry Farm Gates
- Fuel Supply
- Tail water returns
- Homestead
- Trash rack





Pump Control

Put control of the heart of your irrigation operation in your hands. Remotely monitor pump performance, optimise pump RPMs to control the water flow and safely shut down the pump without having to travel to the site. Save time normally spent driving to pump sites, and stay home instead of having to drive around in hazardous conditions. Through the INCYT dashboard you're able to set custom warnings and alarms that can be triggered by a range of different equipment-related events.



Advanced Data

Name	Value	History
Barometric Pressure	1.045 bar	
Battery Voltage	28.4 v	
Coolant Level	100%	
Coolant Pressure	N/A	
Coolant Temperature	43 °C	
Engine Fan Drive	N/A	
Engine Fan Speed	0 rpm	
Engine Speed	850 rpm	
Engine Torque	0 Nm	

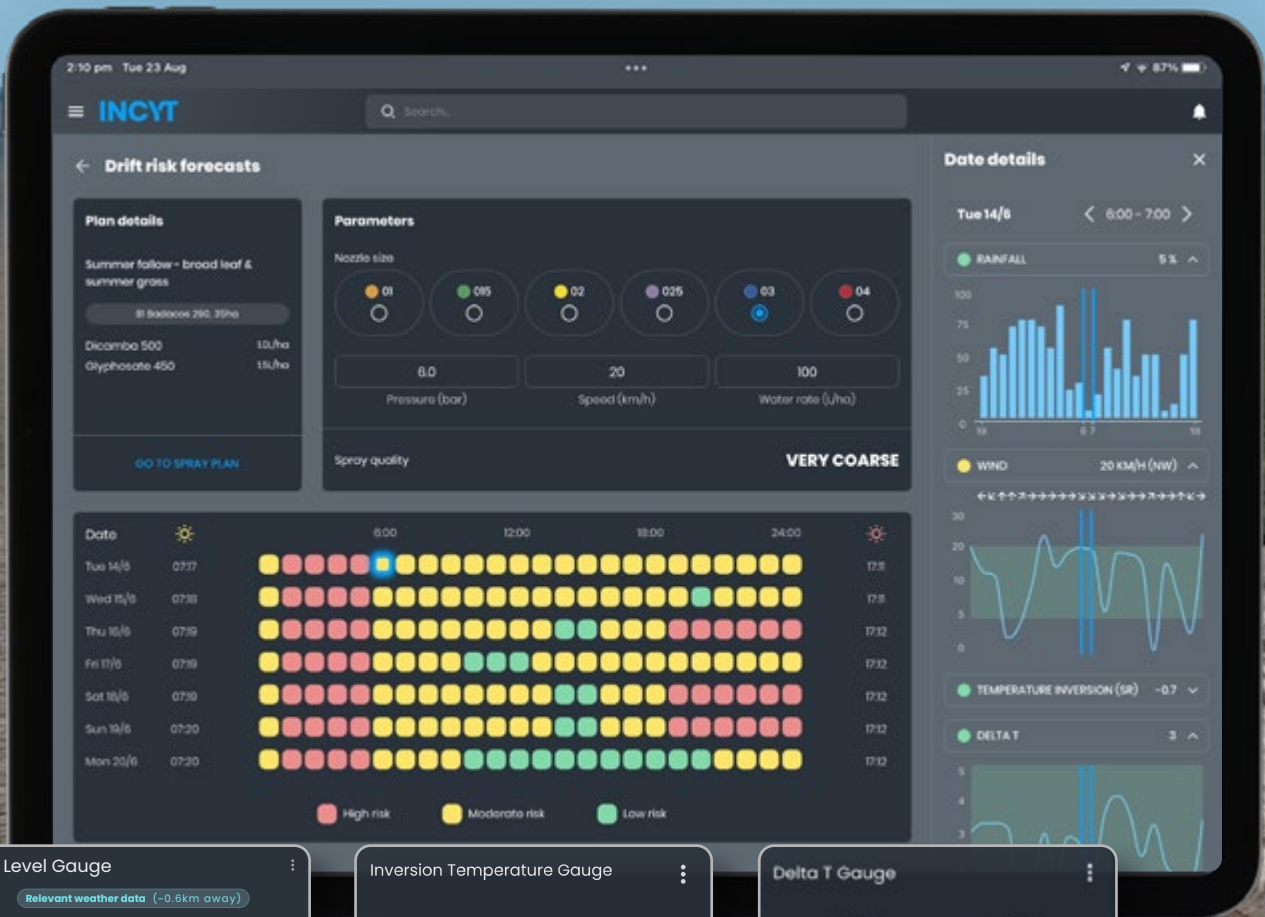
12 minutes ago (11:16)



Weather + Spray Advisory

This tool is designed with best-practice advice from Craig Day's advanced spraying courses, and supported by the CRDC. The system utilises on-farm sensors to gather data on local conditions, helping you monitor the weather and determine if an inversion is present. This supports your efforts to remain compliant with product label requirements while maximising your efficacy. Stay on top of spray conditions from anywhere. Set up SMS and email alerts for yourself or your team based on your custom parameters within the INCYT app, and stay ahead of the weather. Proactively plan and adjust for both low and high-risk windows, ensuring you're always prepared.

Recordkeeping is made effortless with Maverick's automated tools in the INCYT app. Utilise the voice memo feature for quick data entry and benefit from the automated spray report tool with the extra layer of control of opt-in recording.



Risk Level Gauge

Relevant weather data (-0.8km away)

Low Risk

12 minutes ago (XR Network B0312205F919BE82)

Inversion Temperature Gauge

24.1 °C

$\Delta -1.3$ °C

25.4 °C

12 minutes ago (XR Network B0312205F919BE82)

Delta T Gauge

4.21 °C

12 minutes ago (XR Network B0312205F919BE82)



Fuel Monitoring

INCYT helps you know how much fuel you have in storage at all times. Monitor individual fuel storage levels, as well your overall storage per operation. Plan effectively for refuelling and monitor for theft and spillage with this submersible fuel level monitor. By having accurate diesel storage data available at all times you can ensure that sufficient fuel is available to your operation at all times, while minimising the risk of theft and other losses, resulting in improved productivity and reduced costs. You are able to share specific data with fuel suppliers to optimise your service level.

ALERT: Fuel Order Request
Please contact John Smith to schedule a delivery at ABC Farms
2:17am

Tank Fuel Level Gauge
30%
Volume < Capacity > Dep
12 minutes ago (XR Network B0312205F919B)



INCYT Protect

Support and care for your products, from the people who designed them

INCYT Protect provides a repair or replacement service for your device. With access to premium support services and hardware coverage from INCYT, you can rest assured that you are covered when choosing the relevant protection that your device will need.



Hardware Cover

If your device is accidentally damaged, or stolen we'll refurbish or replace it, so you never miss a beat with your reporting.



Software Support

Premium support for your INCYT account and app dashboards so you can get setup the way you want, with the reports that matter most to you.



Advanced Support

Access to dedicated support for your account to help with any troubleshooting issues and application support.

**INCYT
Protect**

CORE



Includes protection against accidental device damage and access to premium support services for the Blue Node telemetry device and our core tracker range.

**INCYT
Protect**

PLUS



A full, holistic approach to support for all your INCYT devices and kits. One cover, peace of mind for everything.

**INCYT
Protect**

XR



Includes protection against accidental device damage and access to premium support services for the XR devices and kits.

**INCYT
Protect**

SENSE A



Protection against accidental damage and access to premium support services for a range of core sensors including ultrasonic, standard rain gauge, gate sensor and more.

**INCYT
Protect**

SENSE B



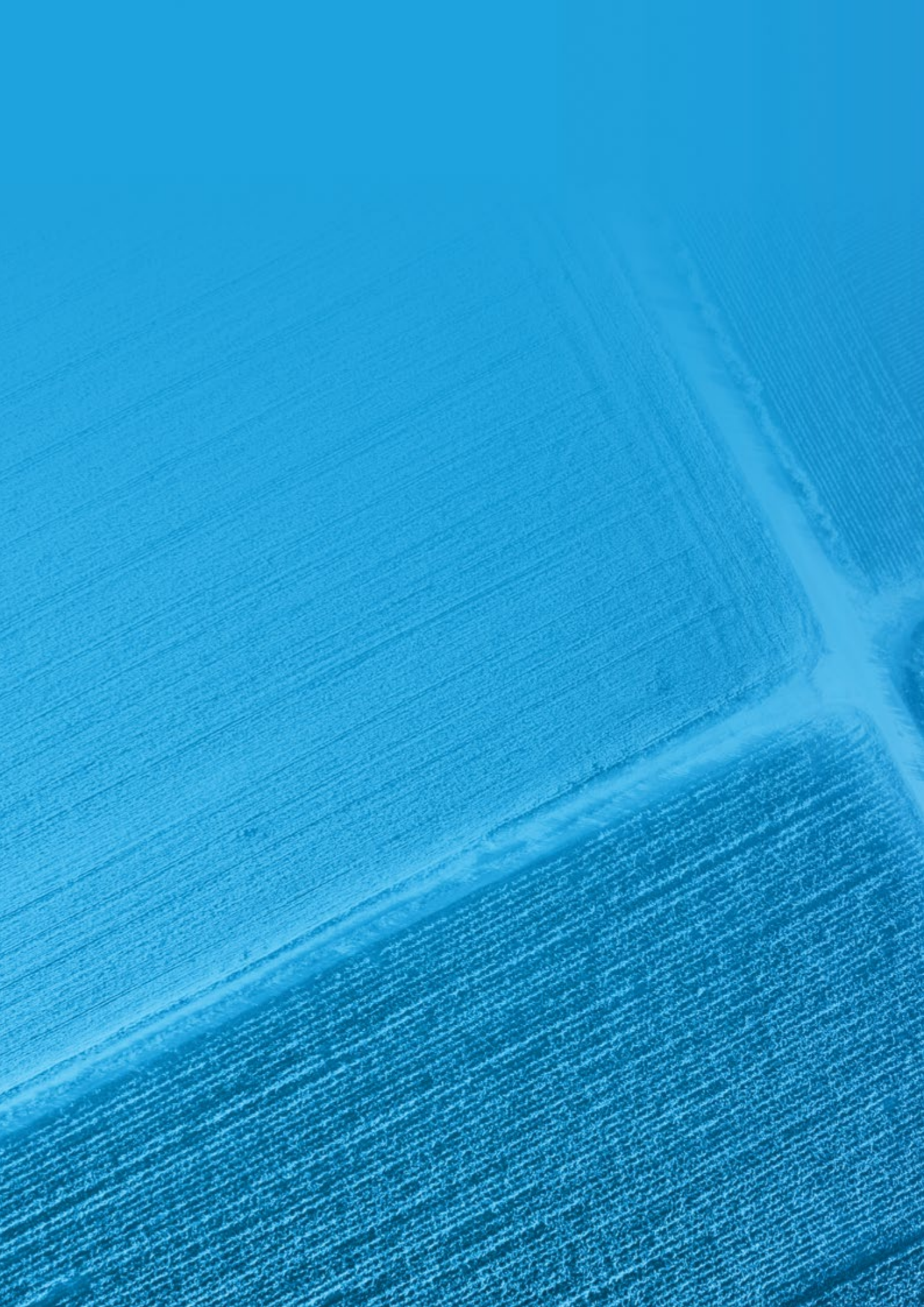
Protection against accidental damage and access to premium support services for a range of sensors including pH and EC, flow rate sensor and electric fence.

**INCYT
Protect**

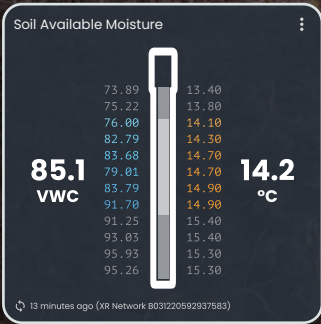
SENSE C



Protection against accidental damage and access to premium support services for a range of advanced sensors including selected soil moisture probes and the pro rain gauge.



Products



AquaCheck® Soil Moisture Probe 800mm (5m cable)

SKU: KT-A-0003



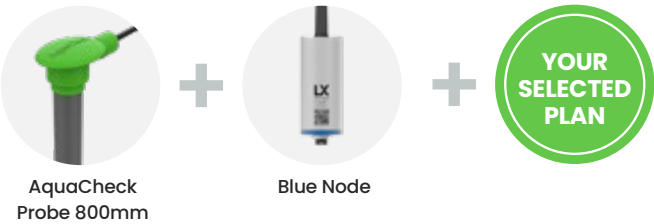
Easy and accurate multilevel soil moisture and temperature measurement to 800mm.

Smart Sensor enabled soil moisture probe that reliably records temperature compensated readings at 6 points over a depth of 800mm to monitor groundwater content (GWC), supporting enhanced decision making around nitrogen application, crop selection, rotation and irrigation. The sensor pack comes with a Blue Node.

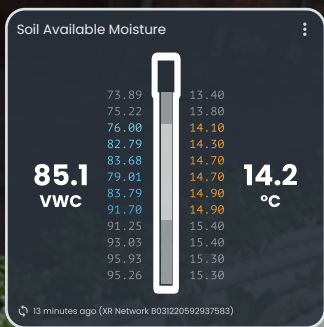
Data visualisation provided by INCYT Dashboard.
Installation guide included.

System Contents:

- 1 x AquaCheck Probe 800mm
- 1 x Blue Node



Probe length	800mm with 6 sensor levels
Shaft diameter	33.5mm +/- 0.2mm
Cable length	5m
Sensor spacing	Every 100mm
Operating temperature range	-20°C to + 60°C



Sentek 100mm single point Soil Moisture Probe (5m cable)

SKU: KT-A-0060

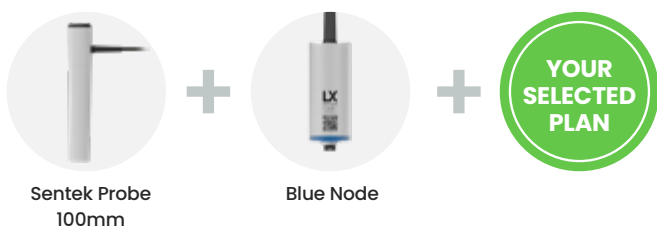
Smart Sensor enabled moisture probe that provides temperature compensated readings over 100mm.

Accurate and reliable soil moisture monitoring to a depth of 100mm. Ideal for enabling data enhanced decision making around management of top soil moisture, raised grower beds, and for end of line monitoring. The sensor pack comes with a Blue Node.

Data visualisation provided by INCYT Dashboard. Installation guide included.

System Contents:

- 1 x Sentek Probe 100mm
- 1 x Blue Node

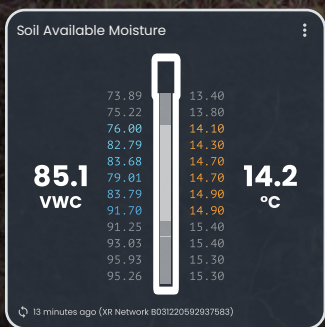


Sentek Probe 100mm

Blue Node

Probe length	100mm
Outer probe diameter top	30mm
Outer probe diameter bottom	25mm
Operating temperature	-20°C to +60°C

★★★
MOST POPULAR



EnviroPro® Soil Moisture Probe 800mm

5m Cable SKU: KT-A-0058

15m Cable SKU: KT-A-0006

Custom Cable SKU: KT-A-0059*

Easy and accurate multilevel soil moisture and temperature measurement to 800mm.

This soil probe reliably and repeatedly records temperature compensated readings for soil moisture at 8 points over a depth of 800mm to monitor groundwater content (GWC), supporting enhanced decision making around nitrogen application, crop selection, crop rotation and irrigation. The sensor pack comes with a Blue Node.

Data visualisation provided by INCYT Dashboard.
Installation guide included.



EnviroPro Probe 800mm



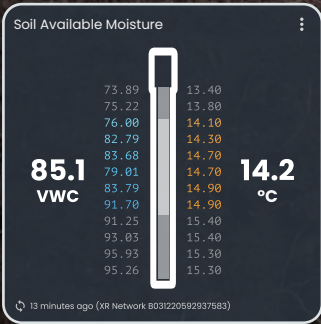
Blue Node



System Contents:

- 1 x EnviroPro Probe 800mm
- 1 x Blue Node

Probe length	800mm with 8 sensor levels
Shaft diameter	33.5mm +/- 0.2mm
Cable length	5m, 15m or *Custom - 60m maximum cable length
Sensor spacing	Every 100mm
Operating temperature range	-20°C to + 60°C



EnviroPro® Soil Moisture Probe 1200mm

15m Cable SKU: KT-A-0004

30m Cable SKU: KT-A-0005

60m Cable SKU: KT-A-0054

Custom Cable SKU: KT-A-0057*

Easy and accurate multilevel soil moisture and temperature measurement to 1200mm.

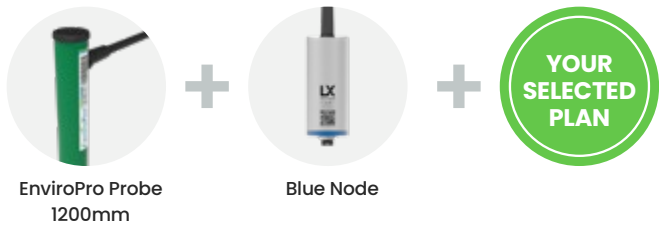
This soil probe reliably and repeatedly records temperature compensated readings for soil moisture at 12 points over a depth of 1200mm to monitor groundwater content (GWC), supporting enhanced decision making around nitrogen application, crop selection, crop rotation and irrigation. The sensor pack comes with a Blue Node.

Data visualisation provided by INCYT Dashboard.
Installation guide included.

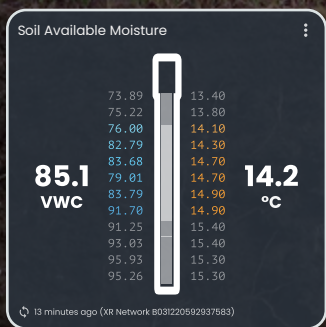


System Contents:

- 1 x EnviroPro Probe 1200mm
- 1 x Blue Node



Probe length	1200mm with 12 sensors levels
Shaft diameter	33.5mm +/- 0.2mm
Cable length	15m, 30m or 60m. *Custom - maximum length applies
Sensor spacing	Every 100mm
Operating temperature range	-20°C to + 60°C



Sentek 600mm Soil Moisture Probe (5m cable)

SKU: KT-A-0008



Easy and accurate multilevel soil moisture and temperature measurement to 600mm.

Accurate and reliable soil moisture and temperature readings across multiple points with the easy drill and drop soil moisture probe. Get a complete and uninterrupted view of the soil profile with readings every 100mm, ideal for seasonal crops. The sensor pack comes with a Blue Node.

Data visualisation provided by INCYT Dashboard. Installation guide included.

System Contents:

- 1 x Sentek Probe 600mm
- 1 x Blue Node

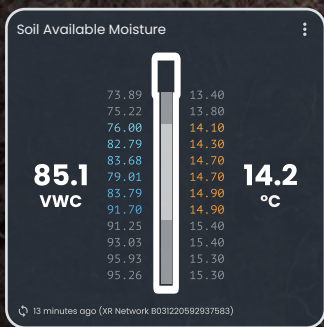


Sentek Probe 600mm

Blue Node

Probe length	600mm with 6 sensor levels
Outer probe diameter top	30mm
Outer probe diameter bottom	25mm
Sensor spacing	Every 100mm
Operating temperature	-20°C to +60°C

★★★
MOST POPULAR



Sentek 900 mm Soil Moisture Probe (5m cable)

SKU: KT-A-0009



Easy and accurate multilevel soil moisture and temperature measurement to 900mm.

Accurate and reliable soil moisture and temperature readings across multiple points with the easy drill and drop soil moisture probe. Get a complete and uninterrupted view of the soil profile with readings every 10cm, ideal for seasonal crops. The sensor pack comes with a Blue Node.

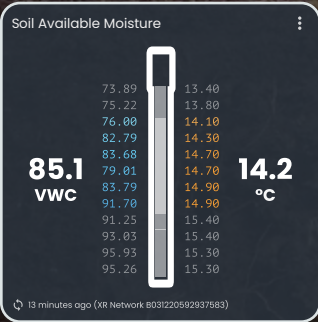
Data visualisation provided by INCYT Dashboard.
Installation guide included.

System Contents:

- 1 x Sentek Probe 900mm
- 1 x Blue Node



Probe length	900mm with 9 sensor levels
Outer probe diameter top	30mm
Outer probe diameter bottom	25mm
Operating temperature	-20°C to +60°C
Sensor spacing	Every 100mm



Sentek 1200 mm Soil Moisture Probe (5m cable)

SKU: KT-A-0007

Easy and accurate multilevel soil moisture and temperature measurement to 1200mm.

Accurate and reliable soil moisture and temperature readings across multiple points with the easy drill and drop soil moisture probe. Get a complete and uninterrupted view of the soil profile with readings every 10cm, ideal for seasonal crops. The sensor pack comes with a Blue Node.

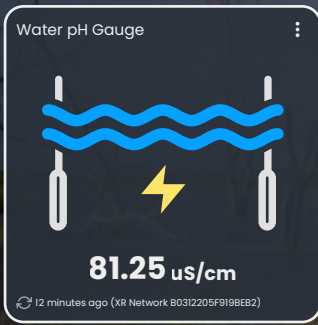
Data visualisation provided by INCYT Dashboard.
Installation guide included.

System Contents:

- 1 x Sentek Probe 1200mm
- 1 x Blue Node



Probe length	1200mm with 12 sensor levels
Outer probe diameter top	30mm
Outer probe diameter bottom	25mm
Operating temperature	-20°C to +60°C
Sensor spacing	Every 100mm



Water EC/Salinity Sensor

SKU: KT-A-0014

Submersible water electrical conductivity sensor (EC/salinity).

This easy to use submersible sensor provides accurate remote reporting on electrical conductivity/salinity levels in water. Use to enhance decision making around irrigation and spray water sources. High accuracy of reporting ($\pm 1\%$) and built to last. The sensor pack comes with a Blue Node.

Data visualisation provided by INCYT Dashboard. Installation guide included.

System Contents:

- 1 x Water EC/Salinity Sensor
- 1 x Blue Node



Accuracy	$\pm 1\%$
Medium	Water
Electrode	Titanium alloy
Temperature compensation	Automatic
Operating temperature	0 to 60°C
Cable length	5m



Water pH Sensor

SKU: KT-A-0015

Submersible water pH sensor.

Ensure optimal nutrient uptake in plants and make data driven decisions around water application, nitrogen application and spray mix ratios with this pH Sensor. This easy to use submersible sensor is a reliable and accurate way to monitor pH levels.

The sensor pack comes with a Blue Node.

Data visualisation provided by INCYT Dashboard. Installation guide included.

System Contents:

- 1 x Water pH Sensor
- 1 x Blue Node



Water pH Sensor

Blue Node

Accuracy	+/- 0.05 PH
Calibration	Every 3 to 6 months
Operating temperature	0 to 60°C
Cable length	5m



Leaf Wetness Sensor

SKU: KT-A-0017

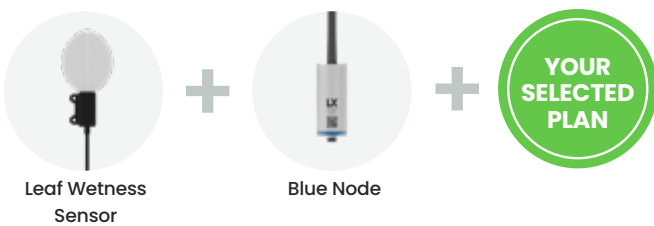
Accurate leaf wetness and ice monitoring for plants.

Accurately measure leaf wetness (presence and duration) and ice formation. Water will condense and evaporate like a real leaf providing enhanced insights around the application of fungicides and early disease detection. The sensor pack comes with a Blue Node.

Data visualisation provided by INCYT Dashboard.
Installation guide included.

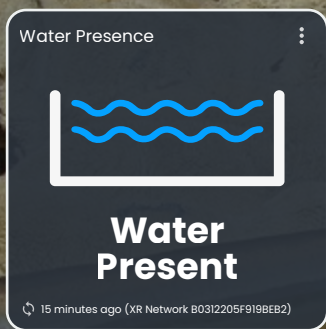
System Contents:

- 1 x Leaf Wetness Sensing System
- 1 x Blue Node



Operating temperature range	-20°C to + 60°C
Cable length	3m

★★★
MOST POPULAR



Water Presence Sensor

SKU: KT-A-0036

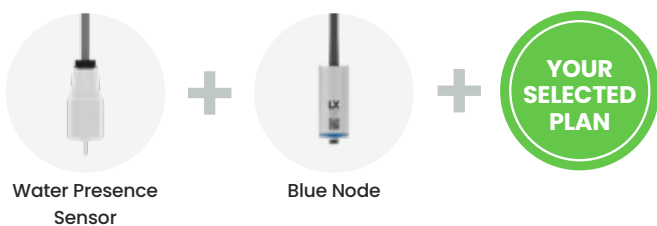
Accurate reliable water presence sensor for troughs.

Help protect your stock from dehydration using this water presence sensor that detects and alerts you when water drops below a pre-set level in a trough. Operates in shallow water enabling monitoring of both sheep and cattle troughs. The sensor pack comes with a Blue Node.

Data visualisation provided by INCYT Dashboard.
Installation guide included.

System Contents:

- 1 x Water Level Sensor
- 1 x Blue Node



Operating temperature range	0 to + 60°C
Cable length	3m

★★★
MOST POPULAR



Water Level Monitor Ultrasonic

SKU: KT-A-0001

Rugged and durable non-contact liquid level measurement for tanks and open water sources.

Install these sensors in water tanks and over open water reservoirs such as dams, turkey nests, irrigation channels and creeks/ rivers (where mounting infrastructure is available). This sensor measures the distance to the surface level using non-contact ultrasonic technology.

Smart Sensor enabled for easy plug n' play operation. LoRaWAN & XR compatible options available (great for areas with marginal LTE-M/NB-IoT coverage). Requires subscription SP001, SP002, SP003 or SP004. INCYT recommends SP002 - one month included.

Data visualisation provided by INCYT Dashboard.
Installation guide included.

System Contents:

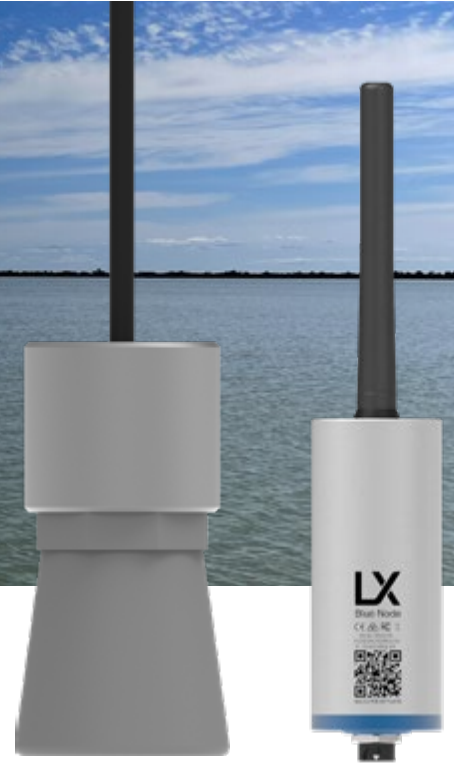
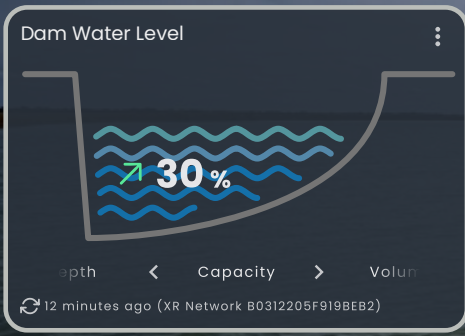
- 1 x Water Level Sensor - Ultrasonic
- 1 x Blue Node



Water Level Sensor
Ultrasonic

Blue Node

Operating temperature range	-20°C to + 65°C
Enclosure rating	IP67
Sensing Distance	0.5m to 10 m
Cable length	<1m



Dam and Reservoir Water Availability

SKU: KT-A-0100

Rugged, accurate sensor kit for remote monitoring of capacity level in dams, turkey nests and/or other reservoirs across your property.

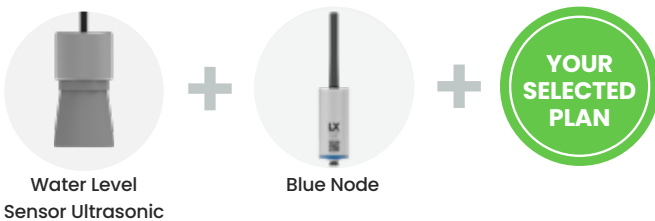
Uses water level monitoring to provide capacity reports. Software configurable for dam dimensions.

Smart Sensor enabled for easy plug n' play operation. LoRaWAN and XR compatible options available (great for areas with marginal LTE-M/NB-IoT coverage). Requires subscription SP001, SP002, SP003 or SP004. INCYT recommends SP002 - one month included.

Data visualisation provided by INCYT Dashboard. Installation guide included. Approved as a secondary device for flood plain harvesting.

System Contents:

- 1 x Water Level Sensor - Ultrasonic
- 1 x Blue Node



Operating temperature range	-20°C to + 65°C
Enclosure rating	IP67
Sensing Distance	0.5m to 10 m
Cable length	<1m

★★★
MOST POPULAR



Channel and Ditch Monitor

SKU: KT-A-0101

This system uses level sensors along with input measurements to get custom reporting on levels in irrigation channels, head ditches, and canals.

Get insights into rate of change or variance from one end of channel to the other with alerts.

Smart Sensor enabled for easy plug n' play operation. LoRaWAN & XR compatible options available (great for areas with marginal LTE-M/NB-IoT coverage). Requires subscription SP001, SP002, SP003 or SP004. INCYT recommends SP003 - one month included.

Data visualisation provided by INCYT Dashboard. Installation guide included.

System Contents:

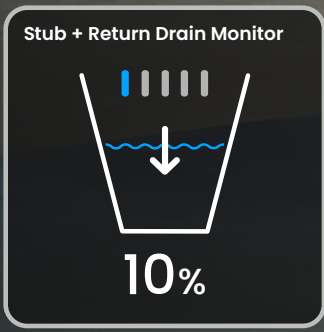
- 1 x Water Level Sensor - Ultrasonic
- 1 x Blue Node



Water Level Sensor
Ultrasonic

Blue Node

Operating temperature range	-20°C to + 65°C
Enclosure rating	IP67
Sensing Distance	0.5m to 10 m
Cable length	<1m



Stub and Return Drain Monitor

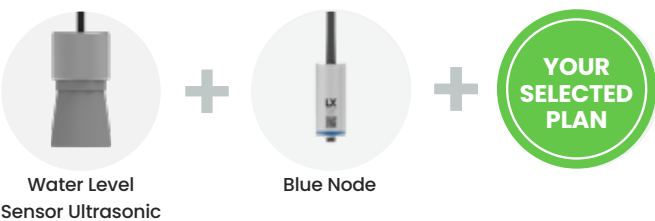
SKU: KT-A-0102

Remote measurement of the return for your irrigation system.

Uses level sensor technology to provide water level reporting to provide insights and early warning if there are any issues. Uses ultrasonic level sensing.

Smart Sensor enabled for easy plug n' play operation. LoRaWAN and XR compatible options available (great for areas with marginal LTE-M/NB-IoT coverage). Requires subscription SP001, SP002, SP003 or SP004. INCYT recommends SP003 - one month included.

Data visualisation provided by INCYT Dashboard.
Installation guide included.

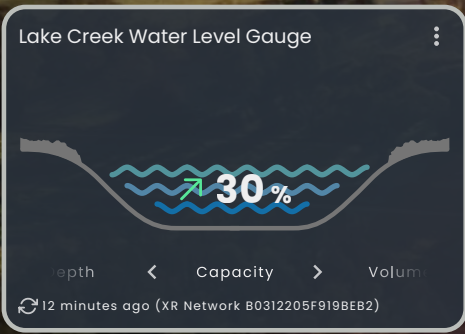
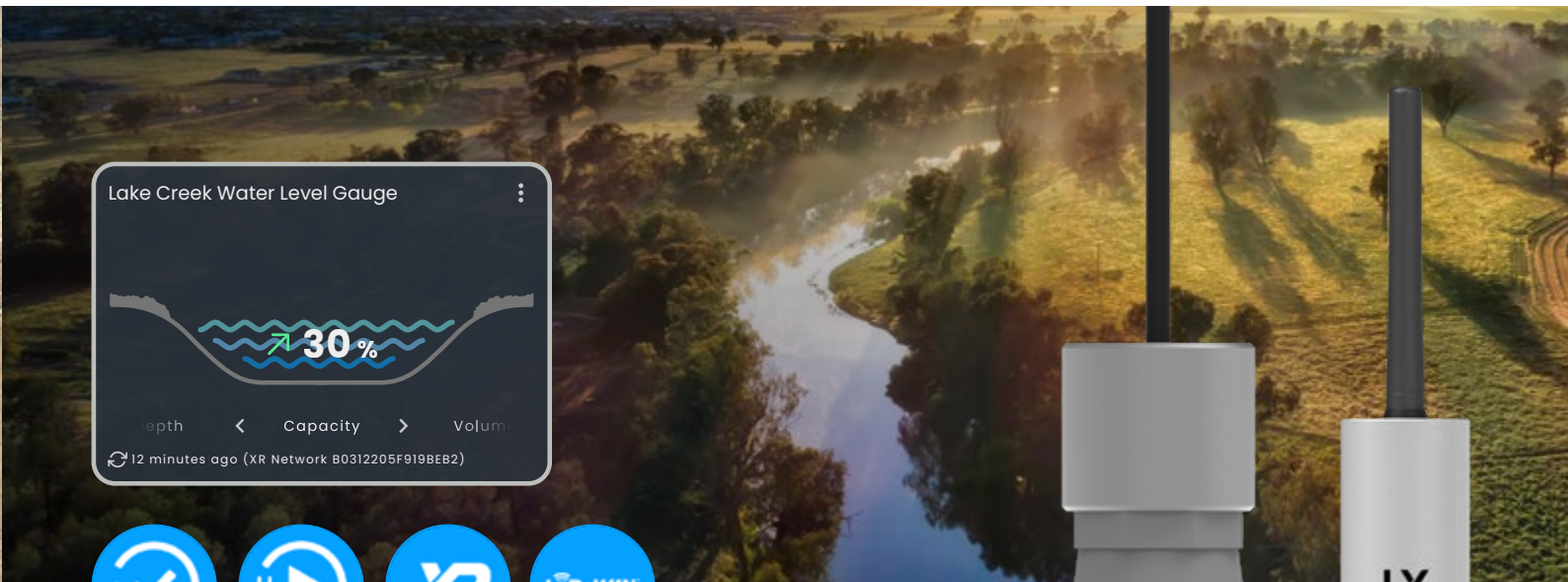


Operating temperature range	-20°C to + 65°C
Enclosure rating	IP67
Sensing Distance	0.5m to 10 m
Cable length	<1m



System Contents:

- 1 x Water Level Sensor - Ultrasonic
- 1 x Blue Node



River and Creek Level

SKU: KT-A-0103

Get remote reporting on water systems such as rivers and creeks on your property.

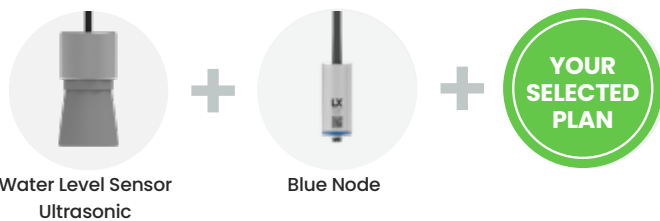
Uses ultrasonic level sensor technology with custom inputs to provide water level reports and generate alerts when levels change significantly.

Smart Sensor enabled for easy plug n' play operation. LoRaWAN and XR compatible options available (great for areas with marginal LTE-M/NB-IoT coverage). Requires subscription SP001, SP002, SP003 or SP004. INCYT recommends SP002 - one month included.

Data visualisation provided by INCYT Dashboard.
Installation guide included.

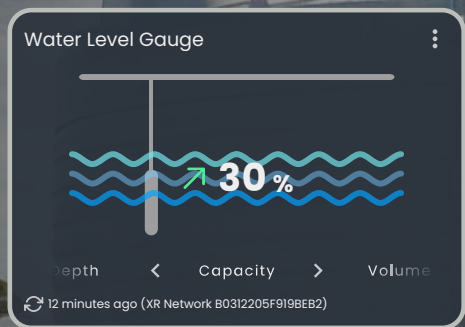
System Contents:

- 1 x Water Level Sensor - Ultrasonic
- 1 x Blue Node



Operating temperature range	-20°C to + 65°C
Enclosure rating	IP67
Sensing Distance	0.5m to 10 m
Cable length	<1m

★★★
MOST POPULAR



Titanium (anti-corrosive) Level Monitor (hydrostatic)

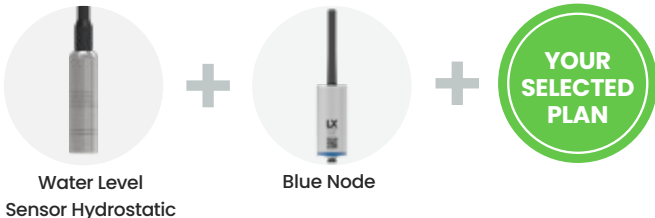
SKU: KT-A-0071

Corrosive liquid resistant sensor for use in challenging environments.

Provides reliable reporting on liquid levels and sends alerts when levels drop below predefined limits. Plan effectively and get an early warning system for issues.

Smart Sensor enabled for easy plug n' play operation. LoRaWAN and XR compatible options available (great for areas with marginal LTE-M/NB-IoT coverage). Requires subscription SP001, SP002, SP003 or SP004. INCYT recommends SP001 - one month included.

Data visualisation provided by INCYT Dashboard. Installation guide included.



Operating Temperature	-10 to 60°C (non-freezing)
Cable Length	3m



System Contents:

- 1 x Water Level Sensor - Hydrostatic
- 1 x Blue Node



LABS



Flood Fence Sensor

SKU: KT-A-0021



Monitor flood fence crossings for fence sag from flood damage events.

The Flood Fence Monitoring Solution includes a Polaris unit that can be connected to your flood fences to generate alerts when orientation changes from fence sag indicate a broken strain wire. Also capable of detecting the status of cyclone based drop gates. The rugged LTE device used in this system is easily installed and activated.

Data visualisation provided by INCYT Dashboard. Installation guide included.

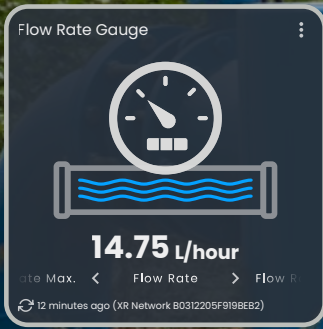
System Contents:

1 x Polaris LTE-M Tracker



Polaris LTE-M Tracker

Battery	Replaceable Industrial Lithium Thionyl Chloride primary battery pack, ~ 5yrs
Typical behaviour	Continuously beaconing, performing daily Wi-Fi scan, GPS lock, LTE-M upload + config check
Location sense	GPS, WiFi geolocation, BLE Beacon and Scan
Size + weight	39 x 80 x 114 mm, 300g
Enclosure rating	IP68/IK10
Temp. Range	+5°C to +40°C (operational temp range -20°C to +60°C)



Water Flow Rate

SKU: KT-A-0032

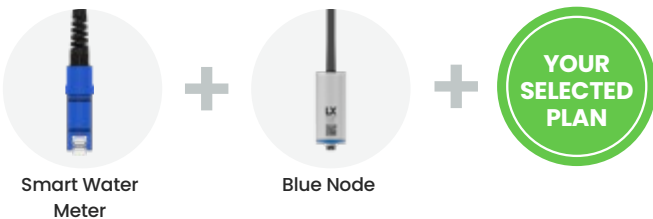
This sensor monitors performance of your water reticulation and irrigation systems.

Ultra-low power paddle wheel based device that is inserted in line with water flow. Software configurable to calibrate for installed pipe diameter.

Data visualisation provided by INCYT Dashboard.
Installation guide included.

System Contents:

- 1 x Smart Water Meter
- 1 x Blue Node



Accuracy (velocity)	± 2.5% accuracy at velocity range 0.5 to 8.5 m/sec
Operating temp. range	+1°C to + 70°C (water must be in liquid state for the sensor to work)
Sensor material	Stainless steel 17-4PH paddle wheel rotor
Pipe diameter	ø15mm to ø100mm in diameter (alternate options available for 100mm - 300mm)
Sensor technology	Induction



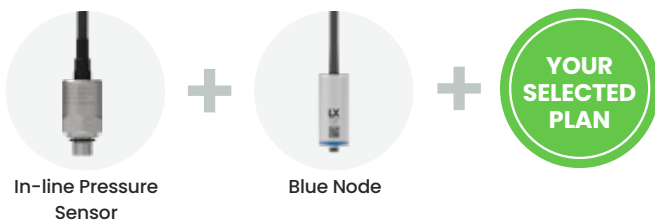
Drip Line Pressure Monitor

SKU: KT-A-0087

Remotely monitor drip line irrigation systems.

This sensor kit allows for accurate, remote monitoring of the pressure and performance of your drip line irrigation systems in nurseries and other applications. The system allows for early indication of any faults in your system, with notifications via the INCYT App. The sensor pack comes with a Blue Node.

Data visualisation provided by INCYT Dashboard.
Installation guide included.



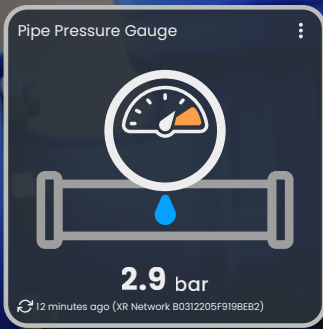
Operating temperature range	-20°C to +70°C
Compatibility	Monitored fluid must be in liquid or gas state
Material	Stainless steel
Pressure range	0-20 bar



System Contents:

- 1 x In-line Pressure Sensor
- 1 x Blue Node

★★★
MOST
POPULAR



Pipe Pressure Monitor

SKU: KT-A-0038

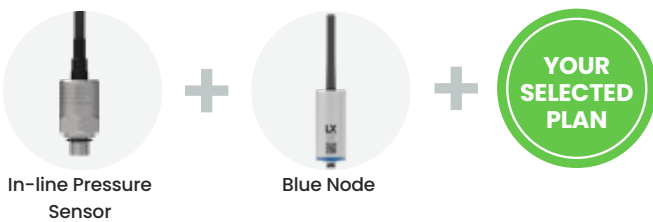
In-line pipe pressure sensor for your water reticulation or irrigation system to monitor pumps, valves and pipes.

Identify issues quickly such as unprimed pumps, leaks, blockages, broken valves etc. 0-20Bar range. Thread based installation. The sensor pack comes with a Blue Node.

Data visualisation provided by INCYT Dashboard.
Installation guide included.

System Contents:

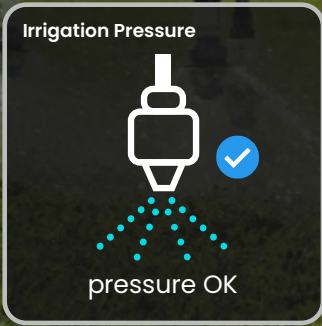
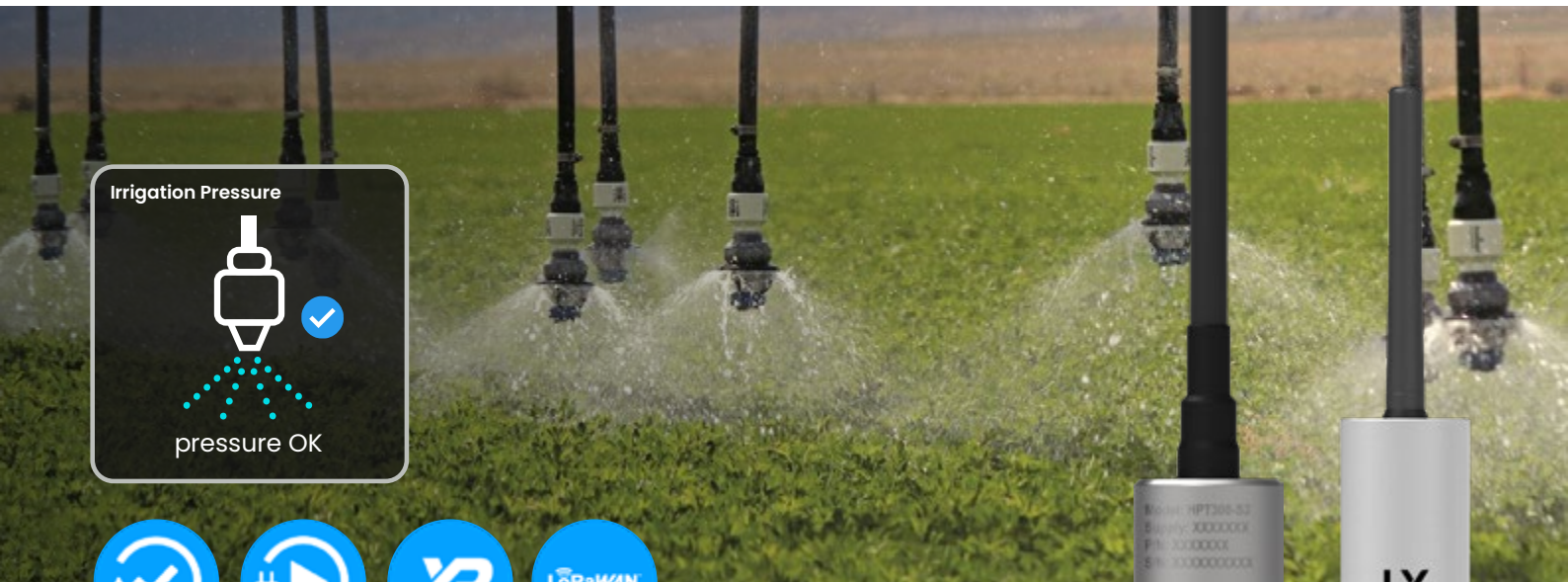
- 1 x In-line Pressure Sensor
- 1 x Blue Node



In-line Pressure
Sensor

Blue Node

Operating temperature range	-20°C to +70°C
Compatibility	Monitored fluid must be in liquid or gas state
Material	Stainless steel
Pressure range	0-20 bar



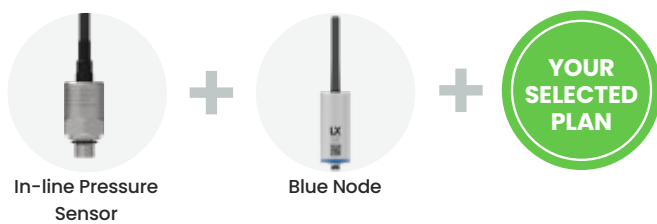
Irrigation Pressure Monitor

SKU: KT-A-0039

These Pressure Sensors can be installed at the end of lateral, pivot and fixed irrigation systems to detect unexpected pressure differentials.

Detect leaks, missing spray boots, pump pressure issues and blockages to ensure optimum system operation. The sensor pack comes with a Blue Node.

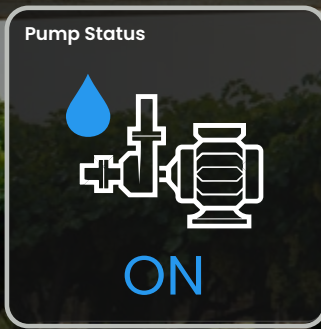
Data visualisation provided by INCYT Dashboard. Installation guide included.



System Contents:

- 1 x In-line Pressure Sensor
- 1 x Blue Node

Operating temperature range	-20°C to +70°C
Compatibility	Monitored fluid must be in liquid or gas state
Material	Stainless steel
Pressure range	0-20 bar



Basic Pump Monitor

SKU: KT-A-0040

Remotely monitor pump systems

Gain insight into water pump activity and status (on/off). This Basic Pump Monitoring System works to provide status and runtime, as well as pressure at the pump outlet, providing insights into water pressure related issues. The sensor pack comes with a Blue Node.

Data visualisation provided by INCYT Dashboard.
Installation guide included.



In-line Pressure
Sensor



Blue Node



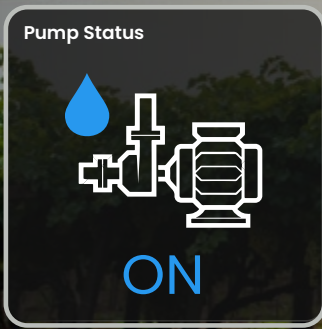
YOUR
SELECTED
PLAN

Operating temperature range	-20°C to +70°C
Compatibility	Monitored fluid must be in liquid or gas state
Material	Stainless steel
Pressure range	0-20 bar



System Contents:

- 1 x In-line Pressure Sensor
- 1 x Blue Node



Advanced Pump Monitor

SKU: KT-A-0041

Gain a full overview of your water pump.

As well as identifying status and run time, this system can determine whether the pump is primed, monitors the pressure and flow rate at the outlet, and provides insights into water pressure related issues. The sensor pack comes with 2 x Blue Nodes.

Data visualisation provided by INCYT Dashboard.
Installation guide included.

System Contents:

1 x In-line Pressure Sensor
1 x Water Flow Rate Sensor
2 x Blue Nodes



In-line Pressure
Sensor



Water Flow Rate
Sensor



2 x Blue Nodes



Accuracy (velocity) - flow rate sensor	± 2.5% accuracy at velocity range 0.5 to 8.5 m/sec
Operating temp. Range - flow rate sensor	+1°C to +70°C (water must be in liquid state for the sensor to work)
Operating temperature range	-20°C to +70°C
Compatibility	Monitored fluid must be in liquid or gas state
Material	Stainless steel
Pressure range	0-20 bar



LABS

Irrigation Motion



conditions OK



Irrigation Motion Detection System Standard

SKU: KT-A-0034

This system monitors lateral and pivot irrigation systems to ensure they are moving as intended.

It uses a smart device to detect pumping activity and reports on excessive dwell time in one location, with hourly reporting on activity whilst in motion.

Simple magnetic swipe activation. Requires LTE-M connectivity. Peel n' stick, bracket and zip tie mounting options. Requires associated application subscription during active months, and hibernate profile for inactive months (SP-060).

Data visualisation provided by INCYT Dashboard.
Installation guide included.

System Contents:

1 x Polaris LTE-M Tracker
1 x Mounting Bracket



Polaris LTE-M Tracker



Mounting Bracket



Battery	Replaceable Industrial Lithium Thionyl Chloride primary battery pack, ~ 5yrs
Location sense	GPS, WiFi geolocation, BLE Beacon and Scan
Size + weight	39 x 80 x 114 mm, 300g
Enclosure rating	IP68/IK10
Temp. Range	+5°C to +40°C (operational temp range -20°C to +60°C)



LABS

Irrigation Motion



conditions OK



Irrigation Motion Detection System Pro

SKU: KT-A-0035

This system monitors lateral and pivot irrigation systems to ensure they are moving as intended.

Detects pumping activity and reports on excessive dwell time in one location. Also gives time in motion reports every 5 mins whilst moving.

Simple magnetic swipe activation. Requires LTE-M connectivity. Mounting bracket included (as part of solar kit). Requires associated application subscription during active months, and hibernate profile for inactive months (SP-060).

Data visualisation provided by INCYT Dashboard. Installation guide included.



System Contents:

1 x Antares LTE-M Gateway + Tracker
1 x Solar Kit



Antares LTE-M
Gateway + Tracker



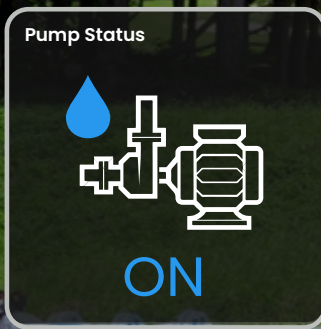
Solar Kit



Power	Power from mains via USB-C power pack, 12V vehicle supply or Solar Kit
Location	GPS, WiFi geolocation, BLE Beacon and Scan
Size + weight	50 x 110 x 114 mm, 250g
Enclosure rating	IP67 / IK07
Temp. Range	-10°C to +60°C (operational temp range -20°C to +80°C)



LABS



Pump Runtime Sensor

SKU: KT-A-0105

This Pump Runtime Monitoring application works on motion detection.

It is plug and play, and works on most pumps including petrol, diesel, electric and windmills. Get insight into your pump status (on/off) and run time.

Simple magnetic swipe activation. Requires LTE-M connectivity. Peel n' stick, bracket and zip tie mounting options. Requires associated application subscription during active months, and hibernate profile for inactive months (SP-060).

Data visualisation provided by INCYT Dashboard. Installation guide included.



**YOUR
SELECTED
PLAN**

Polaris LTE-M
Tracker

System Contents:

1 x Polaris LTE-M Tracker

Battery	Replaceable Industrial Lithium Thionyl Chloride primary battery pack, ~ 5yrs
Typical behaviour	Continuously beaconing, performing daily Wi-Fi scan, GPS lock, LTE-M upload + config check
Location sense	GPS, WiFi geolocation, BLE Beacon and Scan
Size + weight	39 x 80 x 114 mm, 300g
Enclosure rating	IP68/IK10
Temp. Range	+5°C to +40°C (operational temp range -20°C to +60°C)



LABS



LTE-M

Pump Monitoring and Control

Remotely monitor and control your pumps.

This pump monitor and control unit enables you to keep an eye on your pump's performance at all times, whilst also allowing you to adjust pump RPMs and safely shut down the pump remotely. Monitor key parameters such as voltage, current, temperature on your pumps. Through the INCYT dashboard you're able to set custom warnings and alarms that can be triggered by a range of different equipment-related events. *Select models only.*

Data visualisation provided by INCYT Dashboard.
Installation guide included.

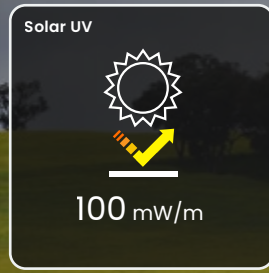
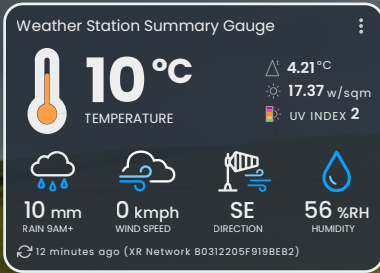
System Contents:

- 1 x ORB Pump Control
- 1 x Engine Loom



YOUR
SELECTED
PLAN

ORB Pump
Control



Weather Station

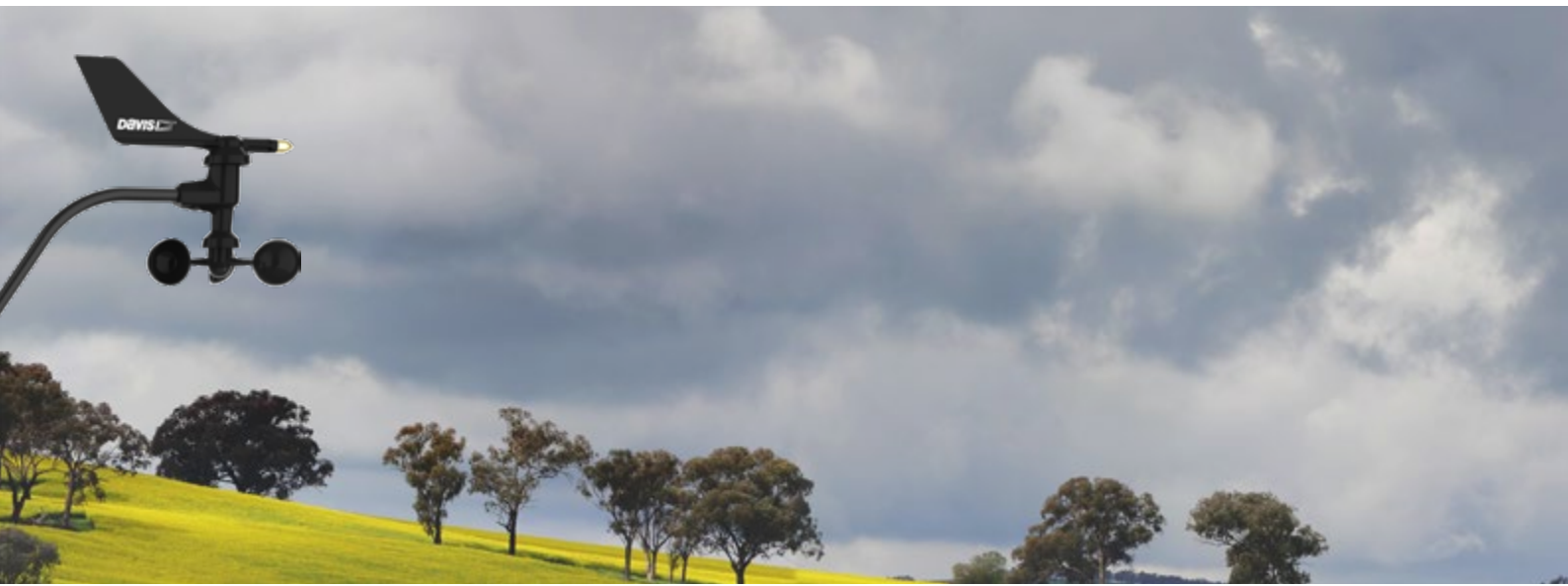
SKU: KT-A-0010 | SKU: KT-A-0011

A professional and rugged weather station with a versatile sensor suite that combines rain collection, air temperature, humidity, wind speed and direction into one package.

Designed to meet the guidelines of the World Meteorological Organization, this weather station is an excellent choice for farmers, researchers and agronomists. Providing multiple points of measurement for accurate weather reporting to make key cropping decisions, including ambient temperature, humidity, rainfall, wind speed and direction including wind gusts. Available in different versions depending on your needs. Each kit variation comes with relevant sensors and Blue Node telemetry devices. The sensor pack comes with a Blue Node.

Data visualisation provided by INCYT Dashboard including dew point, Delta-T and spray advisory features. Installation guide included.

Uv sensor specs	Cut-off ring with a comb structure for cosine response of $\pm 4\%$ FS. Measures both directly transmitted and scattered UV.
Solar radiation specs	Accuracy at $\pm 5\%$ of full spectrum, Cosine response at $\pm 3\%$ for angle of incidence from 0-75°C
Operating temperature	-20° to +65°C
Wind speed sensor	Solid state magnetic sensor
Wind direction sensor	Wind vane with potentiometer
Rain collector type	Tipping spoon, 0.2 mm for metric versions, 214 cm ² collection area
Temperature sensor type	PN Junction Silicon Diode
Relative humidity sensor type	Film capacitor element
Housing material	UV-resistant ABS, polypropylene



Kit Variations

Optional add ons to the Davis Weather station are available as the Standard Weather Station Kit. The standard kit provides all the reporting of the Basic version but includes reporting on UV index, dose rate, and daily and accumulated rate from the UV sensor plus reporting on solar radiation for evapotranspiration and Temperature/Humidity/Sun/Wind (THSW) Index.

Basic

SKU: KT-A-0010

Weather Station + Blue Node + YOUR SELECTED PLAN

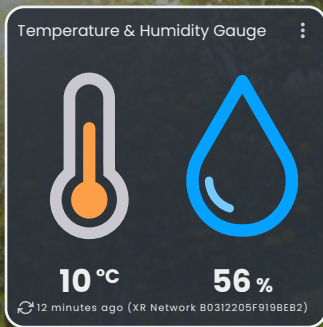
*** MOST POPULAR

Standard (includes mounting shelf)

SKU: KT-A-0011

Weather Station + Blue Node + Solar Radiation Sensor + UV Sensor + YOUR SELECTED PLAN

*UV and Solar Radiation reporting available with *Standard Kit.



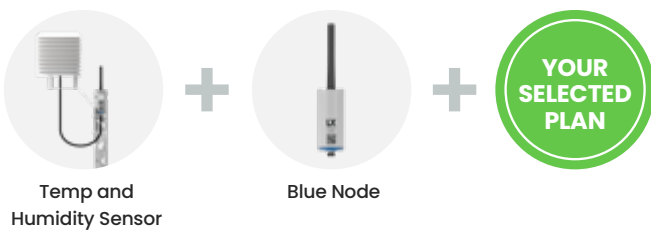
Temperature and Humidity Sensor (High accuracy)

SKU: KT-A-0045

Temperature and humidity sensor with solar radiation shield.

High accuracy Temperature and Humidity sensor with a radiation shield for help determining baling windows, frost events and performing canopy temperature measurement. High 0.1°C accuracy performance. The sensor pack comes with a Blue Node.

Data visualisation provided by INCYT Dashboard. Installation guide included.



Temp accuracy	+/- 0.1°C from -20°C to +60°C
Humidity accuracy	±3%
Cable length	3m

System Contents:

- 1 x Temperature and Humidity Sensor
- 1 x Blue Node

★★★
MOST POPULAR



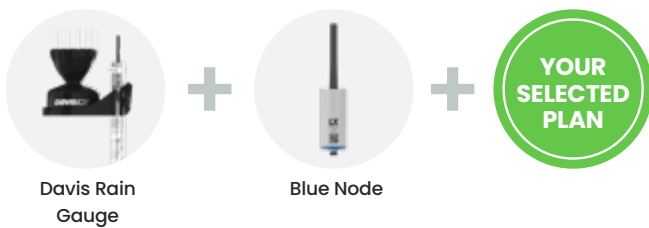
Rain Gauge Standard

SKU: KT-A-0016

Automatic tipping bucket rain gauge with 0.2mm resolution.

Designed to meet the guidelines of the World Meteorological Organisation, this self-emptying, tipping-bucket is exceptionally accurate (to 0.2mm) and automates the sampling and recording of rainfall data. Requires maintenance from time to time. The sensor pack comes with a Blue Node.

Data visualisation provided by INCYT Dashboard.
Installation guide included.



Sensor type	Tipping bucket with magnetic reed switch
Housing material	UV-stabilized ABS plastic
Accuracy	0.2mm resolution
Package includes	Collector bucket, bird spikes, filter insert and pole mount



System Contents:

- 1 x Davis Rain Gauge
- 1 x Blue Node



Rain Gauge Pro

SKU: KT-A-0068



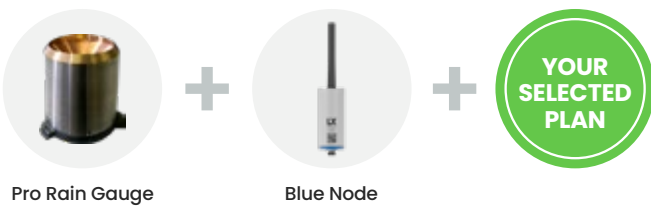
High grade, accurate rain gauge for reliable reporting.

High end rain gauge with hardware similar to that used by the Bureau of Meteorology, providing highly accurate rainfall reports. With a proven accuracy of +/- 3% at rainfall intensities up to 109mm per hour, the tipping bucket design is rugged and corrosion resistant. The sensor pack comes with a Blue Node.

Data visualisation provided by INCYT Dashboard.
Installation guide included.

System Contents:

- 1 x Pro Rain Gauge
- 1 x Blue Node



Sensor type	Tipping bucket with magnetic reed switch
Housing material	UV-stabilized ABS plastic
Accuracy	0.2mm resolution
Package includes	Collector bucket, bird spikes, filter insert and pole mount



CASE STUDY



Longerenong Data Farm

INCYT installed a range of devices and sensors on the Longerenong DATA farm in Victoria, an initiative where farmers can engage with AgTech and gain an understanding of the many variables of the cropping system.

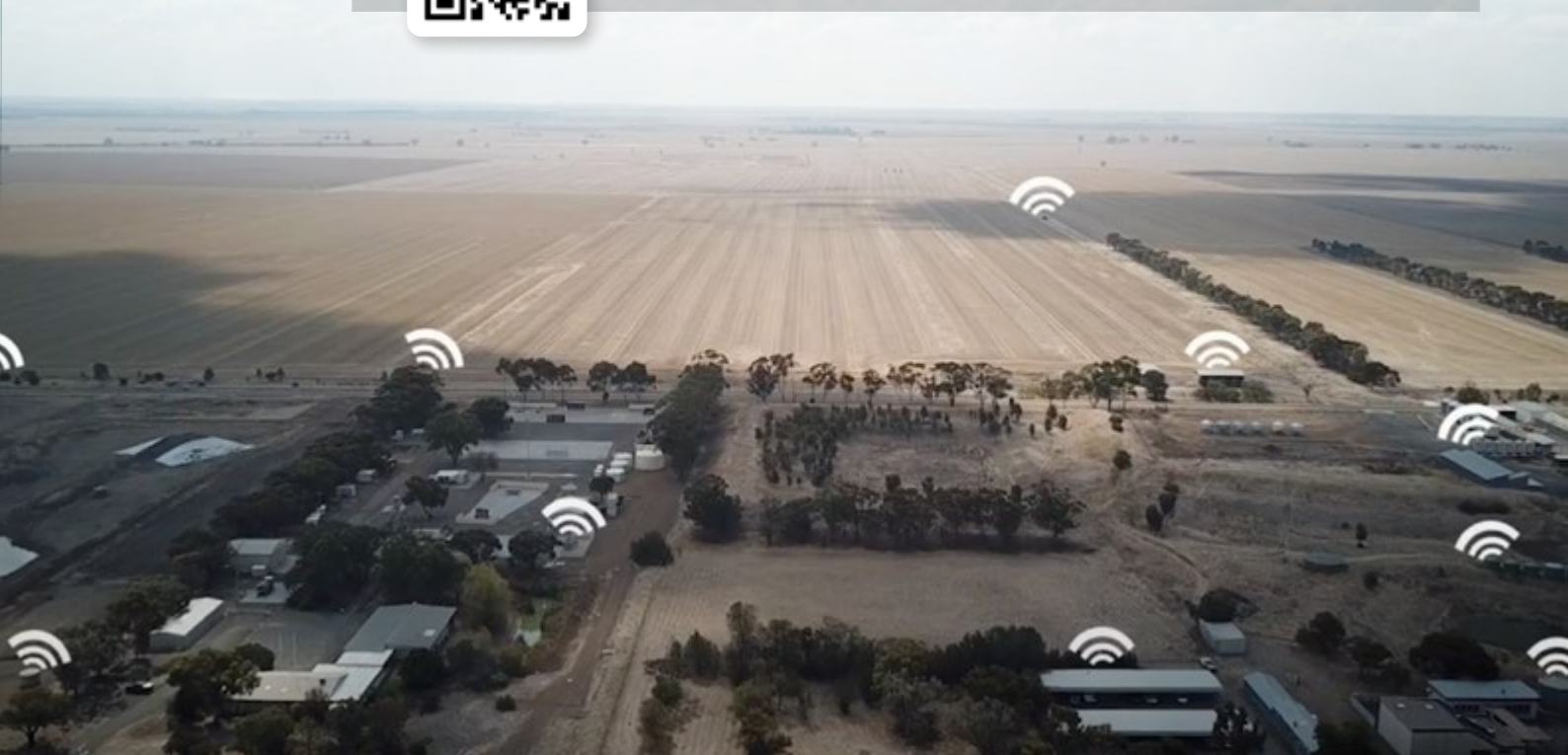
The INCYT AgTech ecosystem has demonstrated how data can be collected in a commercial farming environment and how these insights can be integrated into farming businesses to improve practices and support sustainable management decisions.

They geared the devices on the DATA Farm towards what is important to farmers

Brian - Manager, Longerenong DATA Farm



Scan the QR code to view the full case study online





Risk Level Gauge

Somewhat relevant weather data (>3km away)

Moderate Risk
Delta T

12 minutes ago (RR Network 80312205F919B182)



Spray Advisory System Standard

SKU: KT-A-0064

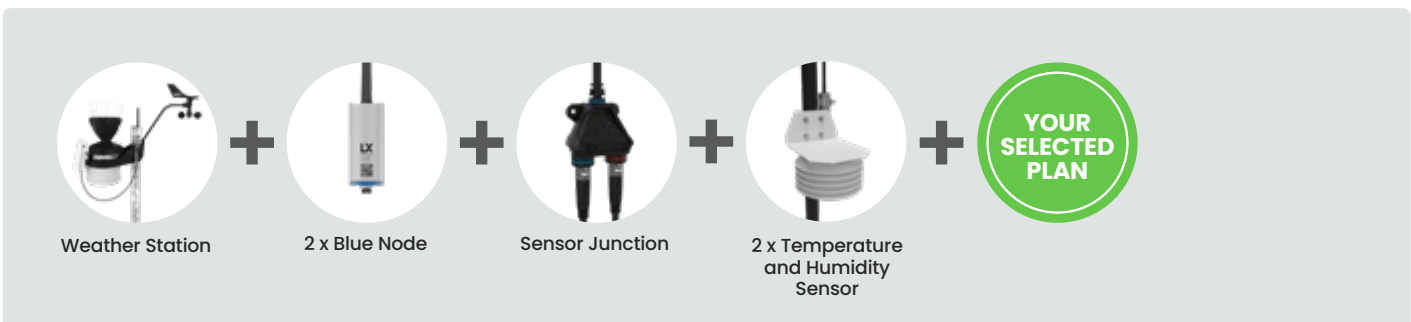
Enhanced decision support for determining spray windows, drawing environmental data from a number of sensors.

The INCYT Spray Advisory takes factors including temperature and humidity, wind speed, Delta-T and temperature inversion risk to give reporting on whether current conditions are favourable, when risk of spray drift is increased and when spray efficacy may be reduced. Includes a 10m pole for the temperature and humidity sensors to create an inversion tower. The sensor pack comes with two Blue Nodes.

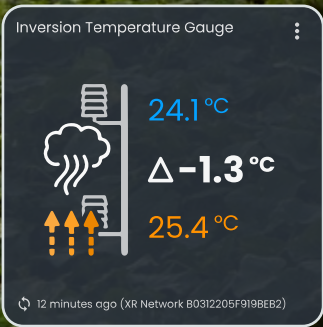
Data visualisation provided by INCYT Dashboard.
Installation guide included.

System Contents:

- 1 x Davis Weather Station
- 1 x High Accuracy Temperature and Humidity Sensor (3m cable)
- 1 x High Accuracy Temperature and Humidity Sensor (8.5m cable)
- 2 x Blue Nodes
- 1 x Sensor Junction
- Inversion Power Pole (10m)



Temp accuracy	+/- 0.1°C from -20°C to +60°C
Humidity accuracy	±3%
Cable length	Short cable 3m, long cable 8.5m



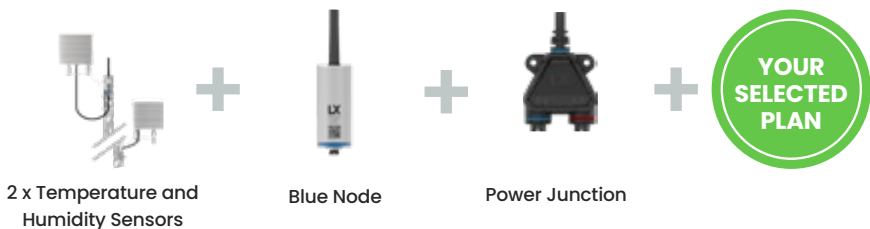
Inversion Risk Detection Kit

SKU: KT-A-0066

Temperature inversion detection kits to support and enable informed decisions around high spray drift risk conditions.

Spray drift can greatly impact the effectiveness of spraying, with some industry experts estimating 90% of spray drift cases are caused by inversion drift. This kit provides highly localised, automatic identification of temperature inversion risk profile (including clear air inversion) to help evaluate the risk profile of spraying during inversion conditions. High accuracy sensors provide graphs and alerts to help inform decision making in conjunction with other factors. Includes mounting shelf.

Data visualisation provided by INCYT Dashboard.
Installation guide included.



2 x Temperature and Humidity Sensors

Blue Node

Power Junction

YOUR SELECTED PLAN

What Our Customers Say

“

It's interesting looking at the variations in rainfall in different locations.

DAVID - BROADACRE CROPPING FARMER

”

“

The moisture probes help make decisions on grass and crop growth.

MARK - DAIRY FARMER

”

“

It's been a great partnership. We were impressed by the quality and execution.

STEVE - VP ENGINEERING, MYRIOTA

”



★★★
MOST POPULAR



Frost Detection System Standard (Portable)

SKU: KT-A-0018

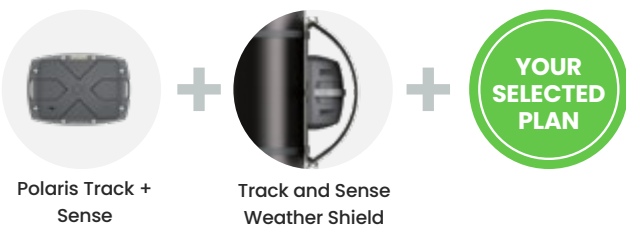
Be alerted of frost events and their severity at point locations.

Detailed knowledge of frost events can help optimise future cropping decisions and activities moving forward. This system uses LTE connectivity to provide reporting on frost events, and can be easily moved from one paddock/area to another as needed.

Data visualisation provided by INCYT Dashboard.
Installation guide included.

System Contents:

- 1 x Polaris LTE-M Tracker with Advanced Sense
- 1 x Track and Sense Weather Shield



Polaris Track + Sense

Track and Sense Weather Shield

Battery	Replaceable industrial lithium thionyl chloride primary battery pack, ~ 5yrs
Location sense	GPS, WiFi geolocation, BLE Beacon and Scan
Size + weight	39 x 80 x 114 mm, 300g
Enclosure rating	IP68/IK10
Temp. Range	+5°C to +40°C (operational temp range -20°C to +60°C)

★★★
MOST POPULAR



Portable Hay Baling Advisory Standard

SKU: KT-A-0020

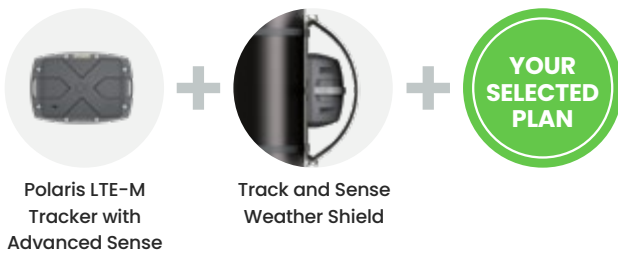
Receive an alert when temperature and humidity conditions are suitable for baling.

The portable Hay Baling Alert System takes the guess work out of deciding when to bale. Make data informed decisions on when to bale with a portable device that can be left at the baling site or located on your baler. The System logs temp & humidity, creating alerts for when your pre-set conditions are met, and when out of range. Data visualisation provided by Incyt.

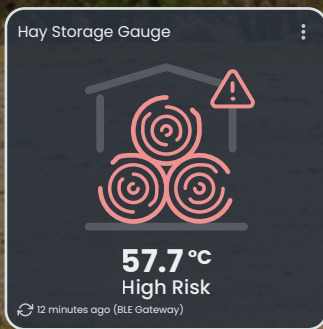
Data visualisation provided by INCYT Dashboard.
Installation guide included.

System Contents:

- 1 x Polaris LTE-M Tracker with Advanced Sense
- 1 x Track and Sense Weather Shield



Battery	Replaceable industrial lithium thionyl chloride primary battery pack, ~ 5yrs
Location sense	GPS, WiFi geolocation, BLE Beacon and Scan
Size + weight	39 x 80 x 114 mm, 300g
Enclosure rating	IP68/IK10
Temp. Range	+5°C to +40°C (operational temp range -20°C to +60°C)



Hay Storage Monitoring System

SKU: KT-A-0022 | SKU: KT-A-0023 | SKU: KT-A-0070

Be alerted when hay degradation is likely to be occurring and prevent combustion of hay bales.

The Hay Bale Monitoring System consists of number of Lyras BLE beacons reporting to a BLE gateway device such as Polaris, Andromeda or Antares. The Lyra sensors are inserted into a representative number of hay bales during storage. These sensors monitor the temperature inside the bale and in the event of a temperature rise, the system generates an alert that an undesirable thermal trajectory is occurring. In the event of likely hay degradation or combustion risk, appropriate action can be taken (selling, accelerating useage or breaking apart the stack).

Different kits are available depending on the frequency of reporting you require and the existing network coverage at your chosen storage site.

Data visualisation provided by INCYT Dashboard.
Installation guide included.

Kit Variations

Different hardware kits to meet your requirements. The standard gives you basic representative reporting on your bales without the need for external power. The Pro features a solar powered Antares and more Lyras for higher frequency reporting and a larger data sampling. In areas with no/patchy LTE-M coverage, use the Andromeda Satellite version for reliable reporting.

Standard

SKU: KT-A-0022

1 x Polaris LTE-M Trackers with Advanced Sense

5 x Lyra BLE Trackers with Advanced Sense

YOUR SELECTED PLAN

Pro

SKU: KT-A-0023

Antares LTE-M Gateway + Tracker

10 x Lyra BLE Trackers with Advanced Sense

Solar Kit

YOUR SELECTED PLAN

★★★
MOST POPULAR

Satellite

SKU: KT-A-0070


Andromeda LTE + Satellite Tracker

4 x Lyra BLE Trackers with Advanced Sense

YOUR SELECTED PLAN



Temperature Gauge



10.2 °C

12 minutes ago (XR Network: B0312205F919BEB2)



Industrial Temperature Probe (low temp)

SKU: KT-A-0042

Hermetically sealed, explosion proof industrial temperature sensor.

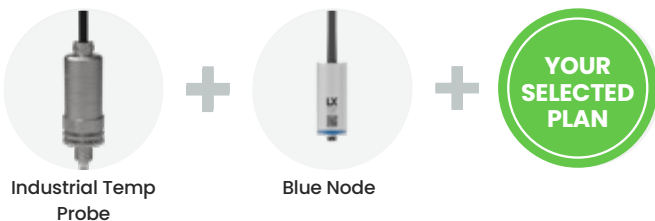
This probe is ideal for use in coolrooms, milk vats and for spray water, pipe and top soil temperature monitoring to create alerts when conditions change. -50°C to +50°C range.

Smart Sensor enabled for easy plug n' play operation. LoRaWAN & XR compatible options available (great for areas with marginal LTE-M/NB-IoT coverage). Requires subscription SP001, SP002, SP003 or SP004. INCYT recommends SP002 - one month included.

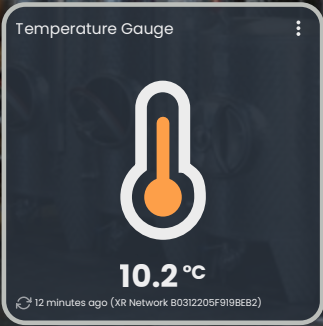
Data visualisation provided by INCYT Dashboard. Installation guide included.

System Contents:

- 1 x Industrial Temperature Probe
- 1 x Blue Node



Sensing range	-50 to 50°C
---------------	-------------



Industrial Temperature Probe (high temp)

SKU: KT-A-0043

Hermetically sealed, explosion proof industrial temperature sensor.

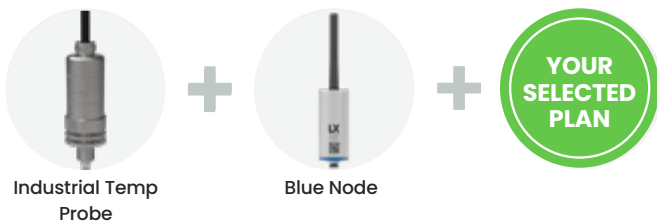
This probe is ideal for use in high temperature applications (0°C to +200°C range).

Smart Sensor enabled for easy plug n' play operation. LoRaWAN & XR compatible options available (great for areas with marginal LTE-M/NB-IoT coverage). Requires subscription SP001, SP002, SP003 or SP004. INCYT recommends SP002 - one month included.

Data visualisation provided by INCYT Dashboard. Installation guide included.

System Contents:

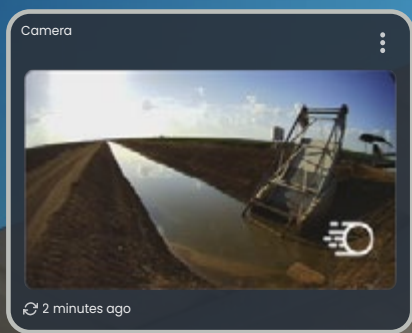
- 1 x Industrial Temperature Probe
- 1 x Blue Node



Sensing range	0 to 200°C
---------------	------------



LABS



Camera

Visually monitor your farm infrastructure.

INCYT helps you visually monitor key parts of your property and operation. The camera is solar-powered, allowing for flexible deployment throughout your farming operation. Receive notifications when the camera is triggered by movement. Camera can be set to send frequent images or set to only send images when triggered by movement. Ideal for getting eyes on trash racks, gates, fuel tanks, and more. Set up INCYT cameras to monitor:

- Farm entrances
- Fuel Supply
- Tail water returns
- Trash rack
- Other key infrastructure

Data visualisation provided by INCYT Dashboard.
Installation guide included.

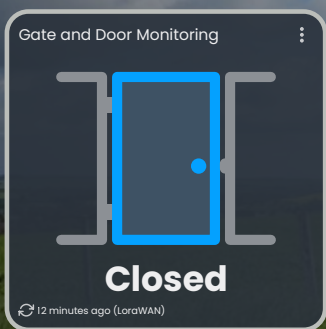
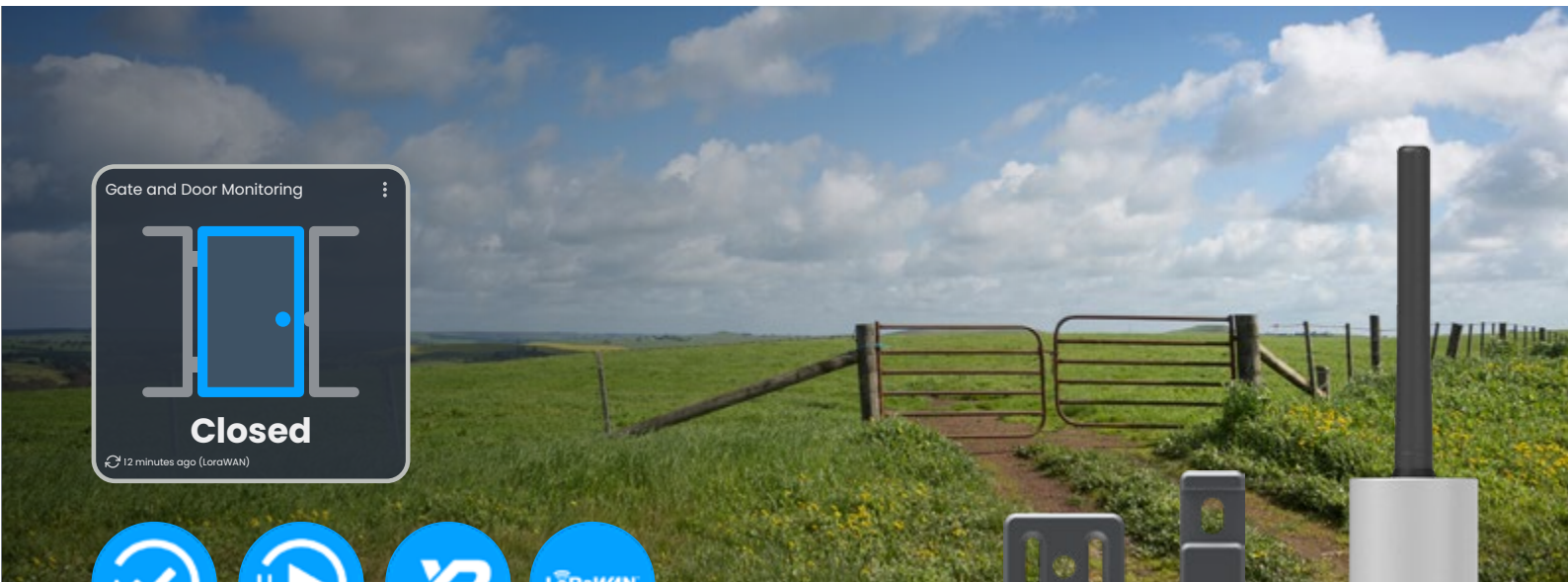


Sensing Camera



System Contents:

1 x Camera



Gate Status

SKU: KT-A-0027

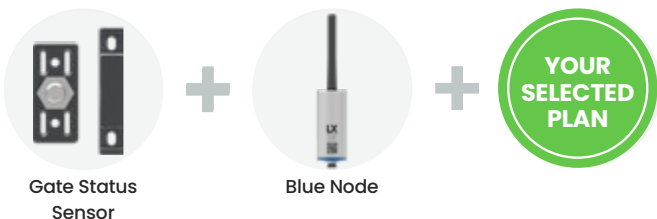
Easy remote monitoring for gates on your property.

This kit gives you the ability to remotely view the status of gates on your property, using this robust, stainless steel sensor. Be alerted when gates have been left open or shut when they shouldn't be, or if unauthorised entry has occurred. The sensor pack comes with a Blue Node.

Data visualisation provided by INCYT Dashboard.
Installation guide included.

System Contents:

- 1 x Gate Status Sensor
- 1 x Blue Node



Operating temperature range	-20°C to +70°C
Compatibility	Operates when mounted on metal structures and also within non-ferrous materials such as wood, plastic or aluminium



Road Crossing Detection

SKU: KT-A-0028

Detect vehicles and other moving objects entering or leaving your property.

This system provides a solar powered vehicle/object detection system using retroflective laser technology. The solution can detect fast and slow moving vehicles, does not rely on heat detection and works during both night and daytime so you can reliably monitor key entry and exit points on your property. The sensor pack comes with a Blue Node.

Data visualisation provided by INCYT Dashboard.
Installation guide included.

System Contents:

- 1 x Beam Break Smart Sensor
- 1 x Blue Node
- 1 x Solar Kit
- 1 x Power Junction



Detection range	Up to 10m (5m in rain/dusty conditions)
Sensor technology	High speed laser retroflective beam
Laser	6.7nJ pulse @ 680nm (red)
Laser classification	Class 1
Power source	Solar kit
Operating temperature	-20 to 60°C
Cable length	2m



Ramp Crossing Detection

SKU: KT-A-0031

Detect when vehicles and animals cross a ramp.

This system uses beam break technology to detect when an object (animal, vehicle, etc.) crosses your ramp. Acts as an early alert system so you can take appropriate action if needed. The kit comes with solar power kit and accessories for remote setup with high frequency alerts and reporting. The sensor pack comes with a Blue Node.

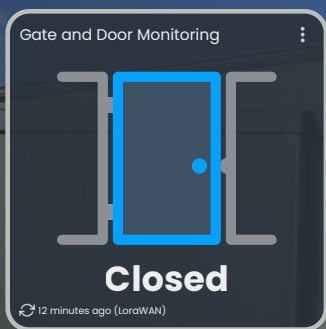
Data visualisation provided by INCYT Dashboard.
Installation guide included.

System Contents:

- 1 x Beam Break Smart Sensor
- 1 x Blue Node
- 1 x Solar Kit
- 1 x Power Junction



Detection range	Up to 10m (5m in rain/dusty conditions)
Sensor technology	High speed laser retroflective beam
Laser	6.7nJ pulse @ 680nm (red)
Laser classification	Class 1
Power source	Solar kit
Operating temperature	-20 to 60°C
Cable length	2m



Door Status

SKU: KT-A-0085

This sensor kit provides remote monitoring for doors on your farm sheds, warehouses and storage areas.

See the status of doors at a glance through the INCYT App, and be alerted when a door is opened, for example to indicate a security issue.

Smart Sensor enabled for easy plug n' play operation. LoRaWAN and XR compatible options available (great for areas with marginal LTE-M/NB-IoT coverage). Requires subscription SP001, SP002, SP003 or SP004. INCYT recommends SP002 - one month included.

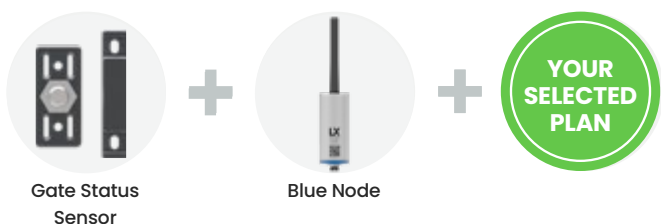
Data visualisation provided by INCYT Dashboard.

Installation guide included.



System Contents:

- 1 x Gate Status Sensor
- 1 x Blue Node



Operating temperature range	-20°C to +70°C
Compatibility	Operates when mounted on metal structures and also within non-ferrous materials such as wood, plastic or aluminium



LABS



Fuel Level Monitor (hydrostatic)

SKU: KT-A-0073

COMING SOON

Submersible hydrostatic sensor used for measuring levels in diesel tanks (only).

Receive alerts when levels drop below your predefined limits. Plan effectively for refuelling and monitor for theft. Not for use in Petrol tanks.

Smart Sensor enabled for easy plug n' play operation. LoRaWAN & XR compatible options available (great for areas with marginal LTE-M/NB-IoT coverage). Requires subscription SP001, SP002, SP003 or SP004. INCYT recommends SP001 - one month included.

Data visualisation provided by INCYT Dashboard.
Installation guide included.



Hydrostatic Pressure Sensor



Blue Node



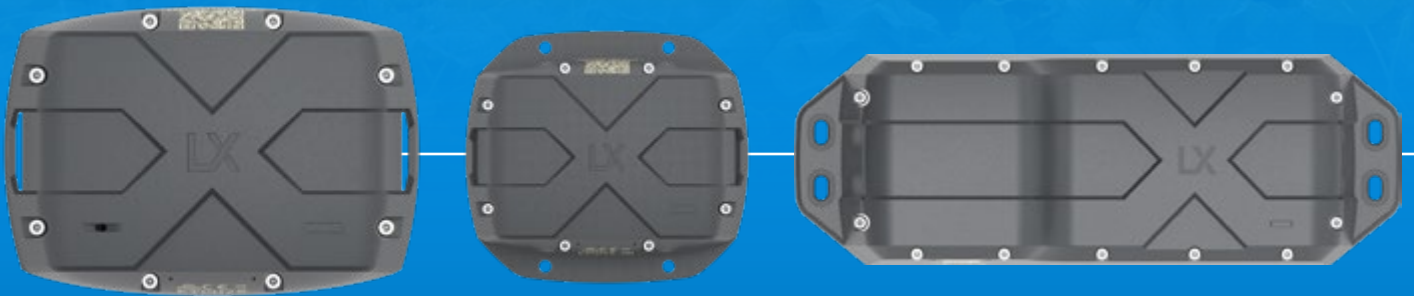
System Contents:

- 1 x Hydrostatic Pressure Sensor
- 1 x Blue Node

Operating Temperature	-20 to 60°C
Cable length	6m
Sensing range	0 to 0.4 bar (typically 2 to 450cm diesel depth)

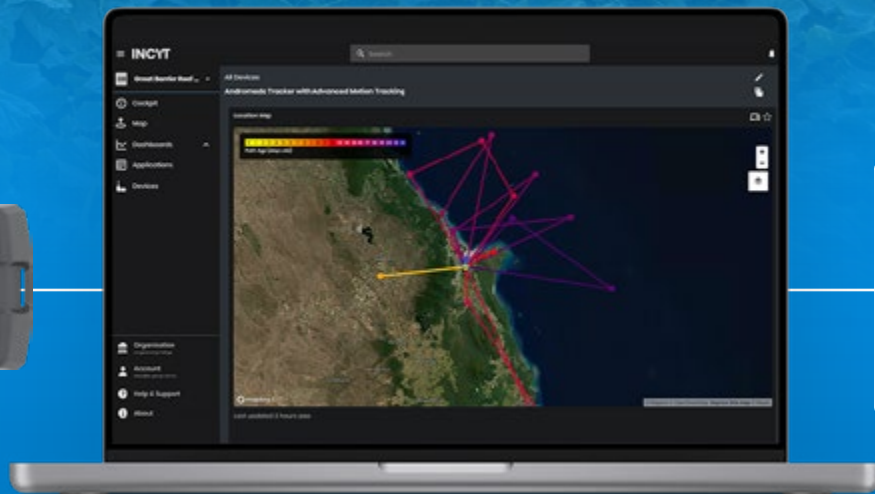


INCYT Track



**Next generation tracking.
Rugged. Robust. Reliable.**

Tracking and sense capability is at the core of many IoT applications and when it comes to location based applications, the needs are many and varied. Finding, logging, geofencing, alerting and sensing across various networks both in outdoor and indoor operating environments. A single tracker simply can't do it all.

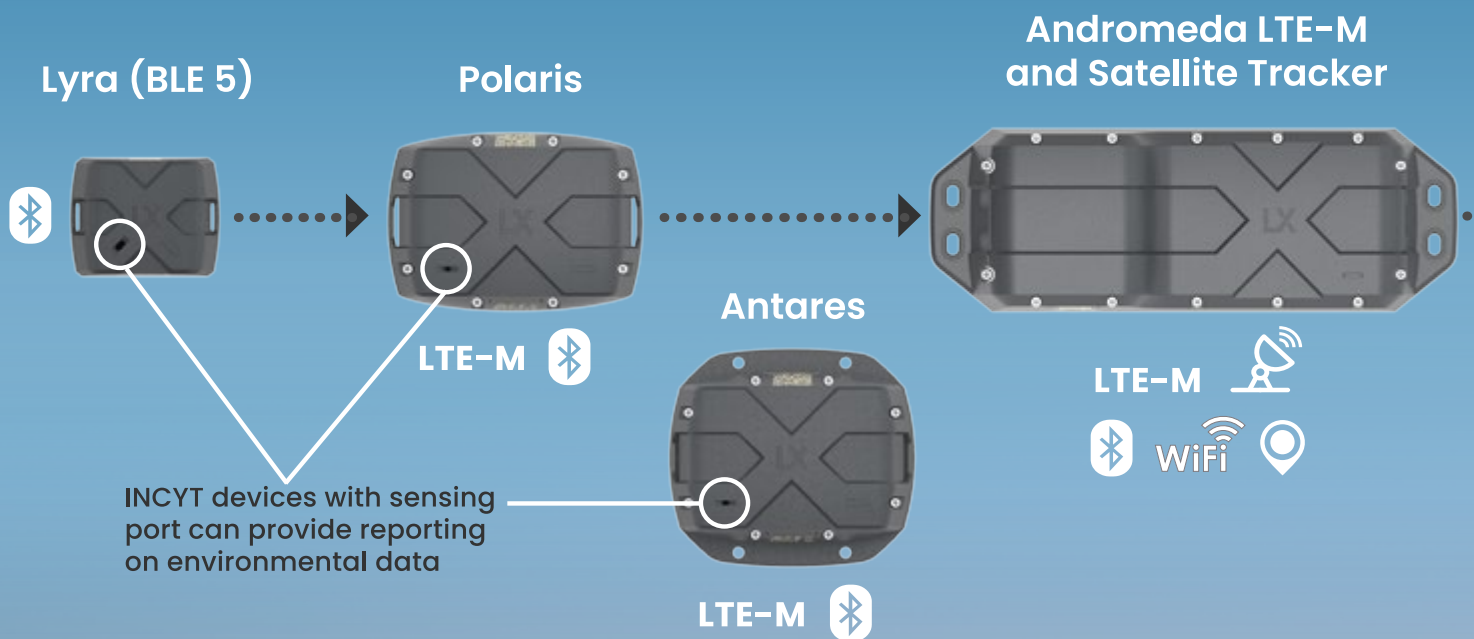


A connected ecosystem. Reporting tailored to your needs.

The INCYT trackers have been designed to work in conjunction with each other across a wide range of use cases to provide sophisticated solutions. They are also equipped with the option of advanced sense capability so you can not only track an asset's path or last known location, but get insight into motion, tilt, run-time, air pressure, temperature and humidity.

How the INCYT Track ecosystem works

The INCYT range of connected trackers, beacons and gateways can be configured to work in different applications to give you the reporting that you need.




Where no LTE-M network available

 Transmit location through Myriota Satellite IoT network



DIRECT TO SATELLITE


CELLULAR



Data received and processed via INCYT cloud

INCYT

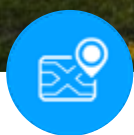
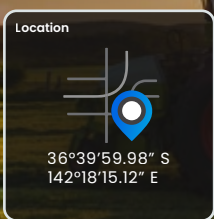


Where LTE-M network available

 Receive data (e.g. updates and configuration changes) over LTE-M

 Transmit location and other data over LTE-M





Antares LTE-M Tracker + Gateway




SKU: ETCHIA-GW

Track and deploy machinery area networks with Antares Gateway.

Track key assets such as vehicles and machinery with the Antares LTE-M tracker. Rugged and loaded with next generation technology for indoor and outdoor tracking support, Antares is capable of deploying a Bluetooth machinery area network around the asset enabling the detection of beacon based devices such as Lyra. Provides location history for assets that move regularly such as trucks, utes and tractors; create geofences; or use in static installations for detecting Lyras in warehouses and machinery sheds. Also capable of monitoring asset activity level, tilt/angle and temperature.

Power from a 12V vehicle supply for mobile applications, or for static applications plug into mains power or a solar kit.

Data visualisation provided by INCYT Dashboard. Installation guide included.

Radio	LTE-M WiFi   
Region	Multi region LTE-M supported bands: 2, 3, 4, 5, 8, 12, 13, 20, 28
Firmware upgrade	Via INCYT App over BLE or Cellular
Power	Power from mains via USB-C power pack, 12V vehicle supply or Solar Kit
Location	GPS, WiFi geolocation, BLE Beacon and Scan
Size + weight	50 x 110 x 114 mm, 220g
Enclosure rating	IP68/IK08
Mounting options	VHB + screws or rivets
Certifications	CE, RCM, BT Sig, FCC
Temp. Range	-10°C to +60°C recommended (max. range -20°C to +80°C)



Temperature + Humidity

10°C 57%

Location

36°39'59.98" S
142°18'15.12" E

Asset Tracking



Antares LTE-M Tracker + Gateway with Advanced Sense

SKU: ETCH2S-GW

Optional accessory:
Track and Sense
Weather Shield

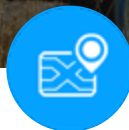


Go beyond just tracking with intelligent sensing.

Equipped for indoor or outdoor use, this LTE-M gateway and tracker goes beyond tracking and geofencing with advanced environmental sense capability. It has the ability to sense a range of environmental factors including temperature, relative humidity, and air pressure (in addition to, motion detection, asset activity level and tilt angle). Use for facilities monitoring or in conjunction with Lyra BLE beacons for produce condition monitoring on the move. Power either from a 12V vehicle supply for mobile applications, or for static applications plug Antares into mains power or a solar kit. Mounting and cable accessories available.

Data visualisation provided by INCYT Dashboard. Installation guide included.

Radio	LTE-M WiFi
Region	Multi region LTE-M supported bands: 2, 3, 4, 5, 8, 12, 13, 20, 28
Firmware upgrade	Via INCYT App over BLE or Cellular
Power	Power from mains via USB-C power pack, 12V vehicle supply or Solar Kit
Location	GPS, WiFi geolocation, BLE Beacon and Scan
Size + weight	50 x 110 x 114 mm, 220g
Enclosure rating	IP67 / IK07 (sensor port must be kept free of liquid and dust)
Mounting options	VHB + screws or rivets
Certifications	CE, RCM, BT Sig, FCC
Temp. Range	-10°C to +60°C recommended (max. range -20°C to +80°C)



Polaris LTE-M Battery Powered Tracker

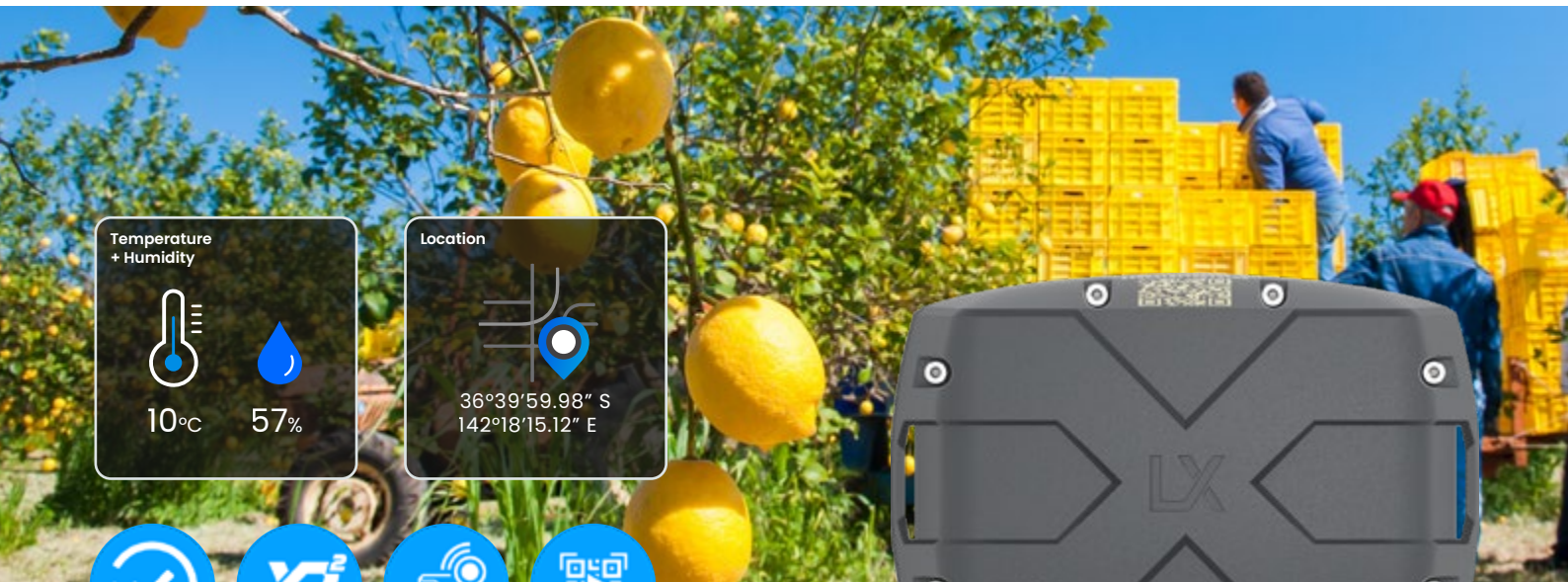
SKU: ETCH1A

Next generation LTE-M asset tracking with ultra-long life battery and intelligent sense capability.

Polaris is the ultra-long life, intelligent location tracker, enabling you to keep eyes on the assets that matter most. Protect against equipment theft and improve logistics planning with this GPS tracker featuring WiFi geolocation to enable indoor and outdoor operation. Perfect for unpowered assets that move less frequently such as field bins, trailers and implements and items on the move like trucks, tractors and quad bikes.

Polaris is also capable of monitoring asset activity level, tilt/angle, temperature and deploying a Bluetooth machinery area network for the detection of Lyra's BLE Beacons. Data visualisation provided by INCYT Dashboard. Installation guide included.

Radio	LTE-M
Region	Multi region Cat M1/NB1 Supported bands: 2, 3, 4, 5, 8, 12, 13, 20, 28
Firmware upgrade	Via INCYT App and over BLE or Cellular
Battery	Replaceable Industrial Lithium Thionyl Chloride primary battery pack
Typical behaviour	Continuously beaconing, performing daily Wi-Fi scan, GPS lock, LTE-M upload + config check
Location sense	GPS, WiFi geolocation, BLE Beacon and Scan
Size + weight	39 x 80 x 114 mm, 300g
Enclosure rating	IP68/IK10
Mounting options	VHB tape, cable tie, security bracket
Storage	9 months
Certifications	CE, RCM, BT Sig, FCC, UN38.3
Temp. Range	0°C to +40°C recommended (max. range -20°C to +60°C)



Polaris LTE-M Battery Powered Tracker with Advanced Sense

SKU: ETCH2S

Optional accessory:
Track and Sense
Weather Shield

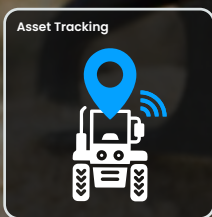


Go beyond location tracking with the Polaris LTE-M tracker with advanced sense. Get environmental condition data along with location for a complete overview of your powered and unpowered assets.

All the tracking capabilities of our standard Polaris LTE-M Tracker, but with enhanced environmental sensing capability including temperature, humidity and air pressure. Track high value assets that require storage and transport between specific environmental limits.

Data visualisation provided by INCYT Dashboard. Installation guide included.

Radio	LTE-M WiFi
Region	Multi region Cat M1/NB1 Supported bands: 2, 3, 4, 5, 8, 12, 13, 20, 28
Firmware upgrade	Via INCYT App and over BLE or Cellular
Battery	Replaceable industrial lithium thionyl chloride primary battery pack
Typical behaviour	Continuously beaconing, performing daily WiFi scan, GPS lock, LTE-M upload + config check
Location sense	GPS, WiFi geolocation, BLE Beacon and Scan
Size + weight	39 x 80 x 114 mm, 300g
Enclosure rating	IP67/IK07, sensor port must be kept free of liquid and dust
Mounting options	VHB tape, cable tie, security bracket
Storage	9 months
Certifications	CE, RCM, BT Sig, FCC, UN38.3
Temp. Range	0°C to +40°C recommended (max. range -20°C to +60°C)



Lyra Bluetooth, Battery Powered Tracking Beacon

SKU: ETBL2A

Compact ultra-long life Bluetooth Low-Energy beacon for low cost asset monitoring.

The Lyra is a small beacon device utilising Bluetooth Low-Energy technology to achieve a battery life of up to 5 years. Provides the last known location region of your assets since last contact with a Bluetooth listening device such as the Antares or Polaris during a listening window. Its small size, low cost and easy peel 'n stick installation makes it ideal for smaller or lower value assets that are typically stored and transported within range of an Antares. Has internal temperature sensor for reporting and recording thermal levels.

Data visualisation provided by INCYT Dashboard. Installation guide included.

Radio	Bluetooth low-energy
Battery	Non replaceable Lithium technology
Typical behaviour	Beaconing every few seconds with last sensor reading included in beacons (refreshed every 15 minutes)
Size and weight	21 x 38 x 45 mm, 36g
Enclosure rating	IP68 / IK08
Mounting	VHB high strength adhesive, security metal bracket, cable-tie
Certifications	FCC, CE, RCM, BT Sig, UN38.3
Temp range	Temp. Range: 0°C to +40°C recommended (max. range -20°C to +60°C)



Lyra Bluetooth, Battery Powered Tracking Beacon with Advanced Sense

SKU: ETBLIS

Compact ultra-long life Bluetooth Low-Energy beacon for low cost asset monitoring with sense capability.

Lyra Sense includes on board temperature, humidity, and activity level with logging capability to monitor environmental conditions over time. With easy peel 'n stick application and a battery life of up to 3 years, Lyra Sense is perfect for condition monitoring applications with power efficient performance. Provides last known location region of your assets since contact with a Bluetooth listening device such as the Antares or Polaris during a listening window.

Data visualisation provided by INCYT Dashboard. Installation guide included.

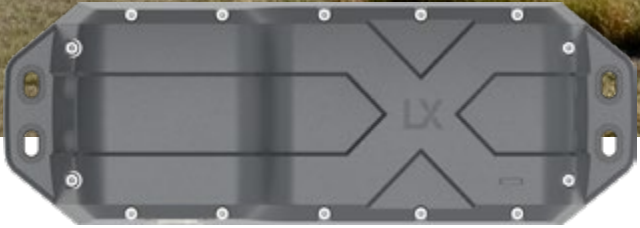
Radio	Bluetooth low-energy
Battery	Non replaceable Lithium technology
Typical behaviour	Beaconing every few seconds with last sensor reading included in beacons (Refreshed every 15 minutes)
Size and weight	21 x 38 x 45 mm, 36g
Enclosure rating	IP67 / IK07, sensor port must be kept free of liquid and dust
Mounting	VHB high strength adhesive, security bracket, cable-tie
Certifications	CE, RCM, BT Sig, FCC, UN38.3
Temperature range	0°C to +40°C recommended (max. range -20°C to +60°C)
Temperature sensing	±0.4°C
Accelerometer sensing	3 Axis
Humidity	±4% RH accuracy



Location



36°39'59.98" S
142°18'15.12" E







Andromeda LTE + Satellite Battery Powered Tracker

SKU: ETCS2A-M1

Powerful, efficient GPS tracking with satellite fallback, for reliability. . . built in.

For reliable tracking of an asset/vehicle, even where LTE (cellular) coverage is unavailable. Andromeda uses hybrid connectivity including a Myriota satellite capability, ensuring you see where your assets are and enables remote sense applications. Battery powered so you can fix it to powered and unpowered assets, Andromeda is a power and cost efficient way to get eyes on the assets that matter to you. Easy installation and activation - get up and running in minutes, with different profiles dependent on your needs.

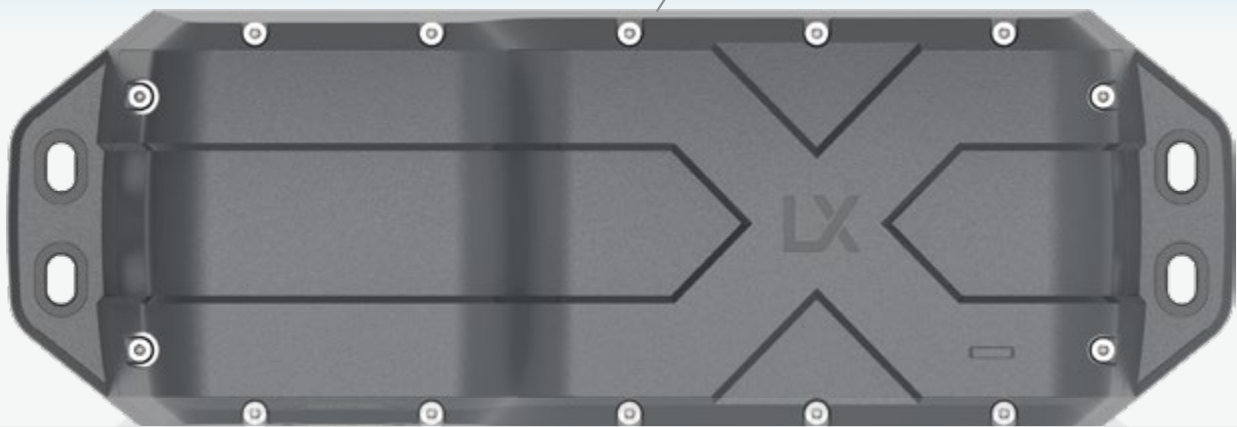
Reporting dashboards available through the INCYT App. Installation guide included.

Radio	LTE-M WiFi    
Region	Multi region LTE-M. Supported bands: 2, 3, 4, 5, 8, 12, 20, 28 Myriota Service 1 and Service 2 variants
Firmware upgrade	Via Incyt Dashboard over Cellular (config using app over BLE coming soon)
Power	Replaceable Industrial Lithium Thionyl Chloride primary battery pack
Location sense	BLE Beacon and Scan, WiFi Scan, GPS
Size + weight	54 x 80 x 230 mm, 0.5kg
Enclosure rating	IP68 / IK08
Mounting option	Screws, bolts or rivets
Packaging	Single unit retail box
Storage	12 months shelf life prior to activation
Certifications	FCC, CE , RCM, BT Sig
Temp. Range	0°C to +40°C recommended (max. range -20°C to +60°C)

AWARD-WINNING Andromeda Tracker

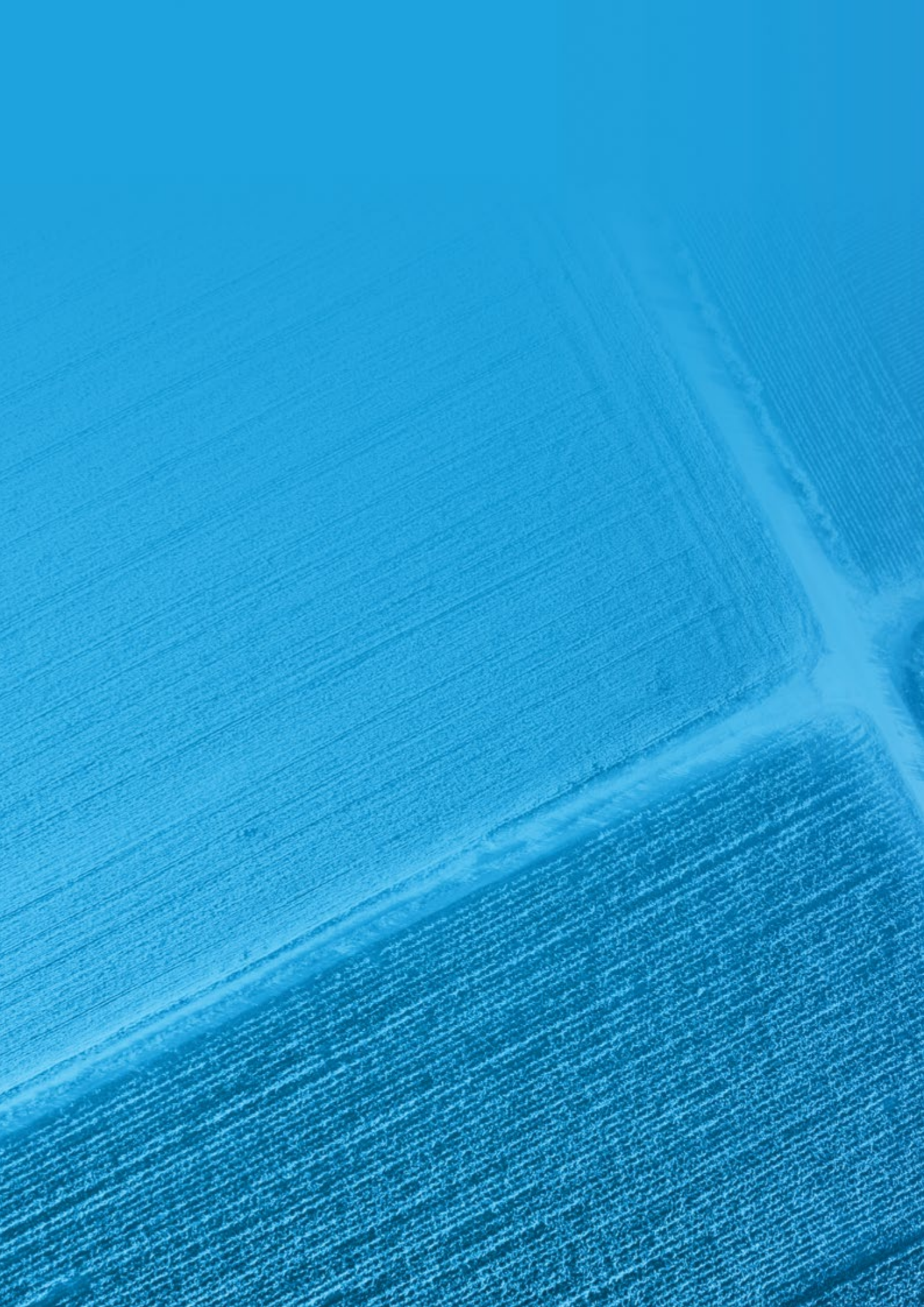


WiFi Bluetooth Satellite Location LTE-M



GPS tracking with satellite fallback for reliability, built in

Andromeda has been designed by the experts in rugged, low-power IoT devices, and uses best-in-class low-orbit satellite connectivity from Myriota. A long-lasting tracker that uses efficient connectivity to provide you with accurate location reporting. Wherever your assets or goods are, Andromeda enables geolocation monitoring with LTE-M upload and Myriota Satellite Fallback for areas without LTE-M /NB-IoT network coverage.



Services

INCYT Stream

The easier way to deploy AgTech

**INCYT
STREAM**

INCYT Stream allows you to install and run the latest, best-in-class trackers, sensors and remote monitoring devices on your farm all for one low daily fee. For as little as \$1 a day, you can receive reporting on things like tank water levels, rainfall, temperature and humidity and pipe pressure.

How it works

You own the data, we own the devices. With a low monthly fee, INCYT will provide you with the required hardware, eliminating the need for high capital outlay on sensors and devices. INCYT Stream is perfect for those who are new to AgTech and want to try out best-in-class trackers, sensors and remote monitoring devices without the high outright purchase cost.



No Lock-In Contracts

With no annual contracts and easy monthly payments, you can be up and running in minutes without expensive hardware costs. Cancel anytime, with no hassle.



Cost Effective

We provide all the hardware you need, so you don't need to outlay capital or worry about the technology becoming outdated.



'All-in-One' System

With connectivity and network, telemetry devices, sensors and trackers all available on the Haas plan, you can build out an entire smartfarm on this model.



INCYT Stream offers multiple solutions for those ready to try their hand at running best-in-class trackers, sensors and remote monitoring devices on their farm. These solutions are broken down into common applications and functionalities required by farming operations.

**INCYT
STREAM**

XR NETWORK



The XR Network combines key advantages of LoRaWAN, LTE-M and NB-IoT in one powerful package. XR unlocks lower power consumption than LoRaWAN while enabling enhanced local on-farm connectivity for those on the fringe of LTE or with challenging terrain.

This solution gives producers access to their own XR network without the upfront hardware cost. The monthly cost differs depending on selected power supply.

Ask our team about XR Network Stream solutions for more information.

**INCYT
STREAM**

SMART FARM SENSORS



Smart Sensor Stream solutions enable you to access our award-winning telemetry node (Blue Node) and selected sensors with multiple reporting options, no lock-in contracts, and easy monthly payments.

Ask our team about Smart Sensor Stream solutions for more information.

**INCYT
STREAM**

TRACKERS



Gain access to the best-in-class tracker range through INCYT Stream's tracking solutions. Plans are available for individual trackers in addition to tracker bundles.

Ask our team about INCYT Stream's tracking solutions for more information.





INCYT Platform Training Session

SKU: Ser-0003

Get up to speed with a dedicated training session on the INCYT software platform. Learn to create dashboards, add users and permissions, view historical data and set critical alerts.



Site Network Modelling and Connectivity Planning Session

SKU: Ser-0004

Not sure about the network coverage options in your area? Before you deploy technology, get recommendations on the best options available at your property, and learn which devices are most suitable for your reporting requirements



Installation Design and Rollout Planning Session

SKU: Ser-006

Dedicated session to plan installation roll-out and geotag the location of each network and sensor device ready for deployment.



On Farm Smart Farm Consultation and Site Survey

SKU: Ser-007

On-farm Smart Farm consultation and site survey to optimise recommendations based on your goals as well as operational and property specific factors.



Smart Farm Design Service

SKU: Ser-0004

Work through a Smart Farm discovery and design process with our team to create a smart farm architecture tailored to your property, showing how you can drive increased productivity, reduce risk and gain more control with AgTech from INCYT.



INCYT Dashboard Set-up and Configuration Service

SKU: Ser-0005

Dedicated support session to set up a bespoke dashboard configured for your Smart Farm - with the viewing widgets, graphs and inputs configured for your requirements.

Award-winning products

With full stack, cutting edge technology developed by the team of engineers at INCYT, the AgTech ecosystem received a Gold award in product design within the Commercial and Industry category at the Sydney Design Awards in 2021.

The INCYT Sensing and tracking devices have gained numerous awards for innovation, design and functionality through reputable design endorsement programs such as the Good Design Awards, Sydney Design Awards and the NSW iAwards.

INCYT

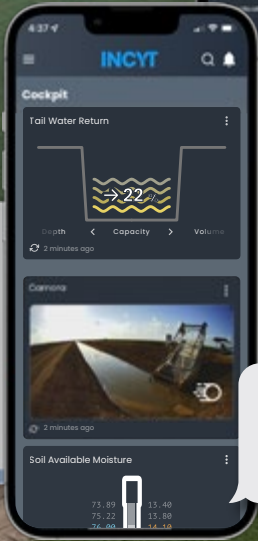
GOOD DESIGN AWARD WINNER

SYDNEY DESIGN AWARDS 2021
DRIVENxDESIGN
GOLD

AUSTRALIAN DESIGN AWARDS 2023
BETTER FUTURE
SILVER

SYDNEY DESIGN AWARDS 2022
BETTER FUTURE
GOLD

2022 iAWARDS WINNER
NEW SOUTH WALES



ALERT: Tail Water Return
has recorded a **fill-level of 14%** which is
below the 15% alarm threshold 2:17am