

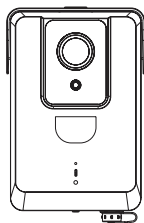


Smart Sensing Camera

Quick Start Guide

INCYT

Kit Contents



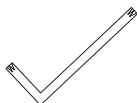
X5 Sensing
Camera × 1



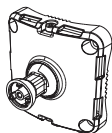
Multi-Interface
Cable (0.5m) × 1



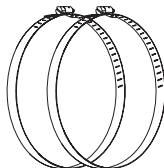
USB-C Charging
Cable × 1



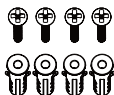
Allen Key × 1



Mounting bracket
and screw × 1



Hose Clamps
× 2



Mounting
Screws × 1

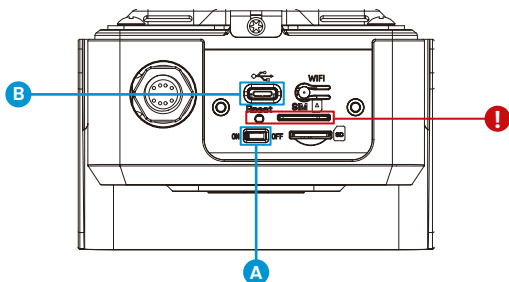
Device Registration

- 1 Register the device using the INCYT App. When instructed, scan the QR code on the box or the device.
- 2 Add the appropriate Application within the INCYT App, and link the device.

INCYT

Preparation

- 3 Ensure you are in an area with adequate 4G cellular coverage.
- 4 Remove the interface cover on the base, and switch the power button (A) to the 'on' position to power the device. The indicator will blink green when the device is started.
- 5 If the battery is low or flat, the device can be charged using the USB-C Port (B)

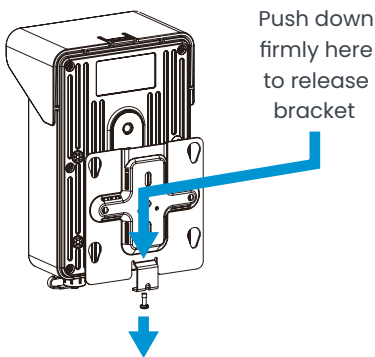


Do not remove the pre-installed SD card and SIM card. Do not press the reset button as it might prevent your camera from working with INCYT

- 6 Ensure at least one image taken by the X5 Smart Sensing Camera appears in the INCYT application.
- 7 **IMPORTANT:** Replace the interface cover. This is required for the device to remain waterproof.

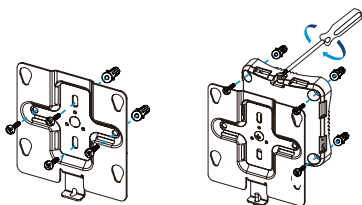
Installation

- Select a site location with suitable 4G cellular coverage. Ensure the device is mounted at high as practically possible.
 - Select a mounting position and orientation that will allow the camera to capture the targeted area.
 - The device must be powered by a 12V power supply, or the dedicated INCYT solar kit, via the terminals on the multi-interface cable.
- 8 Remove the fastener at the bottom of the device. Remove the back plate by pushing down firmly on the tab as pictured below:

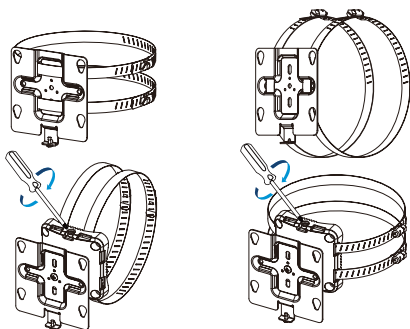


9 Fix the back plate in the position where the device is intended to be installed. Multiple installation methods are available, depending on the location:

- The device can be mounted directly to a wall, or via the 3-axis ball mount bracket.



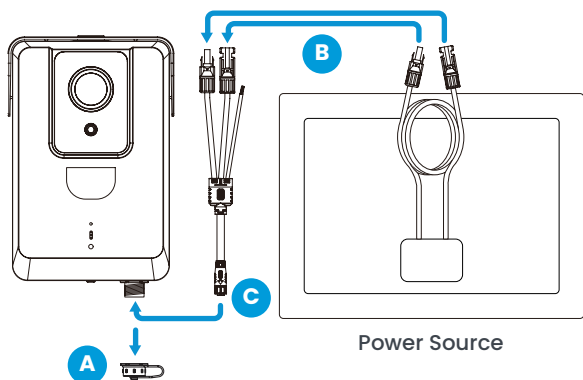
- The device can be pole mounted with hose clamps, or the 3-Axis ball mount bracket and hose clamps.



- 10 Remove the external connector protective cap from the camera. **A**

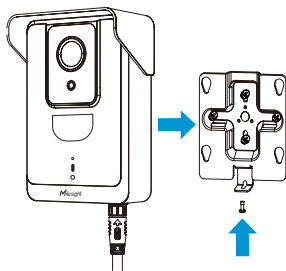
Connect the 12V DC power source to the positive and negative terminals of the multi-interface cable as picture below. **B**

Connect the multi-interface cable to the camera. **C**

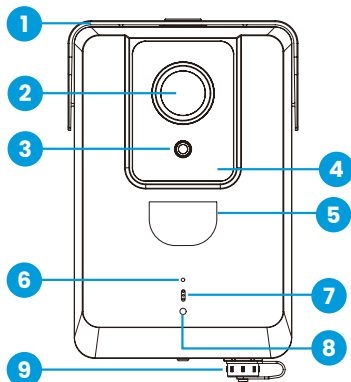


Protect cables from animals by purchasing sheathing from your local hardware store

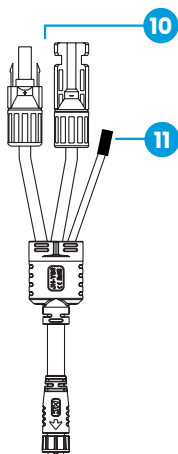
- 11 Mount the device to the backplate and replace the screw on the base. Remember to periodically clean the lens to maintain optimal picture quality. Check the camera orientation on the INCYT App, and adjust accordingly.



Product Overview



X5 Sensing Camera



Multi-Interface Cable

- 1** Rain Cover
- 2** Lens
- 3** Light Sensor
- 4** IR LEDs
- 5** PIR Lens

- 6** Temperature Sensor
- 7** Sound Sensor
- 8** Indicator light
- 9** Power Socket
- 10** External Power Terminals
- 11** External Sensor Trigger

FCC Statement

Any Changes or modifications not expressly approved by the party responsible for compliance could void the user's authority to operate the equipment. This device complies with part 15 of the FCC Rules. Operation is subject to the following two conditions:

1. This device may not cause harmful interference.
2. This device must accept any interference received, including interference that may cause undesired operation.

FCC Radiation Exposure Statement:

This equipment complies with FCC radiation exposure limits set forth for an uncontrolled environment. This equipment should be installed and operated with minimum distance 20cm between the radiator & your body. This transmitter must not be co-located or operating in conjunction with any other antenna or transmitter.

INCYT

For help visit INCYT
incyt.com.au