

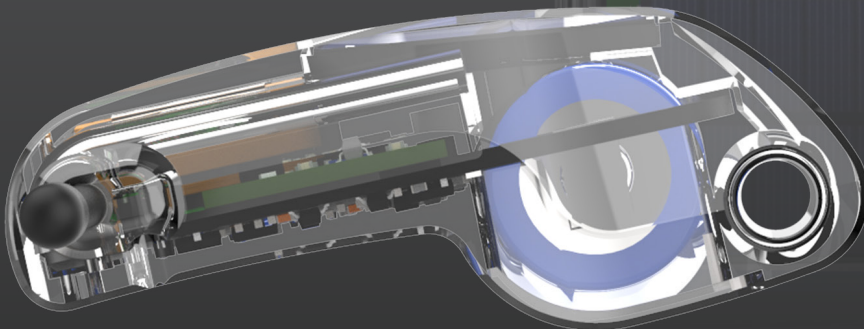
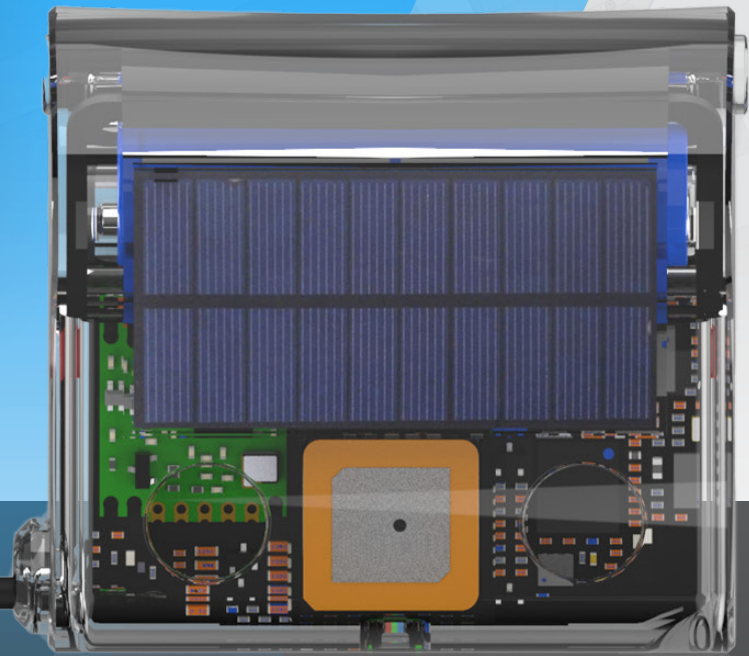
# INCYT

# Cygni

Location



36°39'59.98" S  
142°18'15.12" E



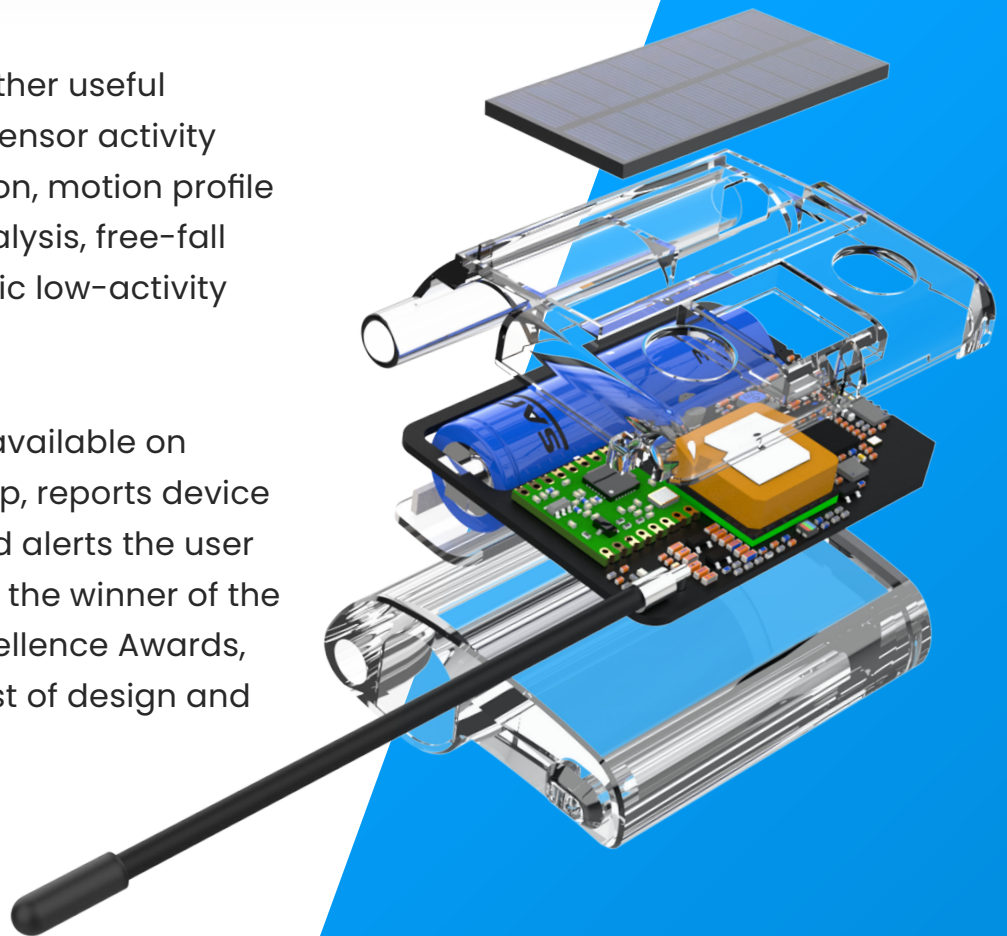
# Cygni

**A robust, lightweight and safe,  
near-real-time wildlife telemetry tag.**

The Cygni Tracker is a telemetry tag that tracks and monitors wildlife through an intelligent ecosystem of network devices.

It also has an array of other useful features such as dual-sensor activity logging, impact detection, motion profile analysis, orientation analysis, free-fall detection, and automatic low-activity e-mail alerts.

The software platform, available on both mobile and desktop, reports device health, battery level, and alerts the user to network drop-offs. As the winner of the Sydney Engineering Excellence Awards, Cygni combines the best of design and engineering.





Actual Size

## Cygni at a Glance

- Small size: 22 × 56 × 60\* mm  
*(\*excl. external 86mm flexible whip antenna)*
- Solar powered
- Multi-functional in application  
(animals or assets)
- Lightweight (77g)
- Device interaction features
- INCYT geofence access
- IP68 rating

## Key Use Cases

- Thousands of Koala's currently being Tracked in Australia
- Other animals trails in progress

## Applications

### Wildlife Interaction

Tracks the proximity between Cygni tags to identify factors such as isolation, mating habits and fighting.

### High-Risk Zone alert

Predefined high-risk zones using geofencing to alert the user when an animal is near danger.

### Advanced monitoring and reporting features

- Low-activity Detection
- Impact Detection

# Ecosystem at a Glance

	LYRA	POLARIS
		
<b>Description</b>	<b>A simple, robust BLE Beacon. Use with a listening device (Antares, Polaris, Andromeda) for asset tracking and ambient condition monitoring.</b>	<b>Track, sense and monitor with this rugged, battery powered LTE-M tracker. Affix to powered and unpowered assets.</b>
<b>Typical Applications</b>	Great to keep an eye on multiple assets in a vicinity, or when in motion across a supply chain.	Great for tracking assets such as shipping containers, pallets and trailers as well as fixed install for facilities monitoring.
<b>Networks</b>		LTE-M  WiFi 
<b>Sensing</b>	Temperature, Relative Humidity, Orientation	Temperature, Relative Humidity, Atmospheric Pressure, Orientation, Motion, Runtime, Light Detection*
<b>Power</b>	Sealed internal battery, ~ 7 years	Replaceable internal battery <sup>2</sup> ~ 7 years
<b>Dimensions and Weight</b>	21 x 38 x 45 mm   36g	39 x 80 x 114 mm   300g
<b>Enclosure Rating</b> <sup>4</sup>	IP68 (IP67 for sense version) IK08 (IK07 for sense version)	IP68 (IP67 for sense version) IK08 (IK07 for sense version)
<b>Certifications</b> <sup>5</sup>	CE, FCC, RCM, BTSig	CE, FCC, RCM, BTSig

<sup>1</sup> Satellite link limited to device location updates and limited BLE gateway capabilities (up to 4x surrounding INCYT over-the-air Firmware updates and indoor geolocation are only available over the LTE-M link <sup>2</sup> Battery replaced <sup>3</sup> Sold separately <sup>4</sup> Sensor port must be kept free from liquids and dust <sup>5</sup> Some certifications are still in progress, but

Note: WiFi and GPS technologies used as geolocations systems only



## ANTARES



**Deploy a machinery area network for Lyra devices and get high frequency tracking and condition monitoring with this externally powered device.**

Ideal for creating geofences to record entry and exit of goods, for fleet vehicle tracking, in fixed installs for condition monitoring, and in combination with Lyra for monitoring goods in transit.



Temperature, Relative Humidity, Atmospheric Pressure, Orientation, Motion, Runtime, Light Detection\*

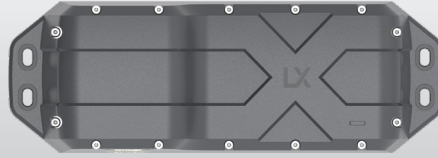
Externally power via IP68 connector – mains, automotive or solar kit power options<sup>3</sup>

50 x 110 x 114 mm | 220g

IP68 (IP67 for sense version)  
IK08 (IK07 for sense version)

CE, FCC, RCM, BTSig

## ANDROMEDA



**The best of Polaris with an added direct satellite connectivity fallback to keep your system online even in the most remote locations.<sup>1</sup>**

Perfect for remote tracking in areas like mine sites, remote haulage routes, and land-to-sea tracking. Add to powered and unpowered assets for supply chain overview.



Orientation, Motion, Runtime

Replaceable internal battery<sup>2</sup>  
~ 3 years

54 x 80 x 230 mm | 500g

IP68  
IK08

CE, FCC, RCM, BTSig

BLE devices). Other features such as device activation, remote reconfiguration, by an INCYT approved trained technician  
at all emissions and safety tests have been performed and passed

