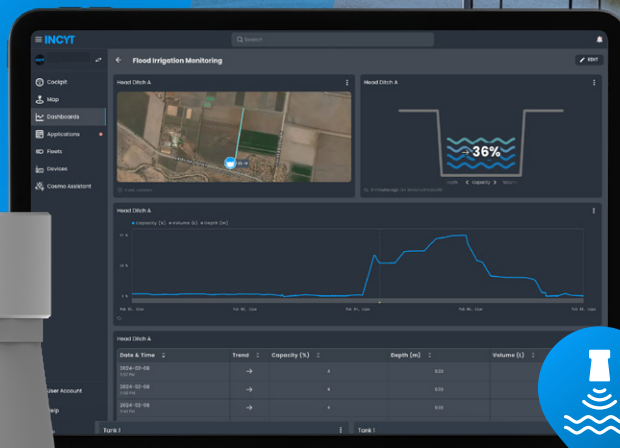





## Dam and Reservoir Level Sensor



**INCYT's Ultrasonic Dam and Reservoir Level Sensor offers you accurate, real-time water level data.**

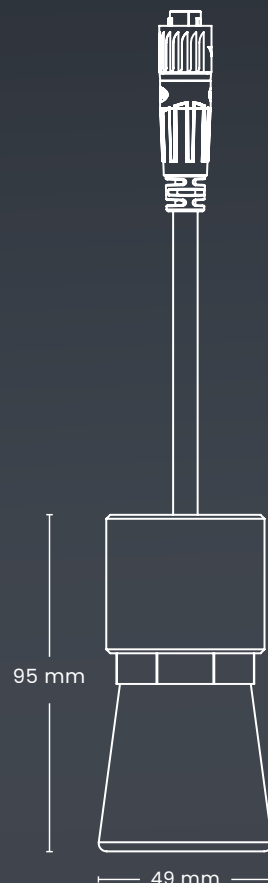
Knowing your exact dam or reservoir level helps you optimise your irrigation schedule and by setting the correct level alarms you know when to turn a pump on or off, or when to open or close a gate or valve. Instead of driving around for visual inspections and working with approximate level estimates, with INCYT you introduce accuracy into your operation. With INCYT's ultrasonic dam and reservoir level sensor you now have an accurate way to monitor all your dams and reservoirs, and receive alerts when a certain level (high or low) has been reached. You no longer need to drive across your operation to manually check water levels and can share this data with anyone you like through the INCYT cockpit. INCYT's robust ultrasonic dam and reservoir level sensor can be mounted on gates, bridges, or anywhere else over your dam or reservoir.

- + Configure your dashboard the way you want to see your dam or reservoir levels (% full, volume in litres, or depth in metres)
- + Configure low and high level alarms for different parameters such as usage, refill, depth in meter, volume in litres, and % capacity
- + Calibrate your devices in-app as required.

-  **Built to Last**
-  **Plug 'n Play**
-  **XR Network**

### Specifications

Max. distance to water level	50cm
Max. water depth	8m
Water proof rating	IP67
Working temperature	-40°C - +65°C
Accuracy	Margin of error <1%
Power Consumption	Ultra Low





## Monitor Your Channels 24/7

INCYT's ultrasonic dam and reservoir level sensor utilises INCYT's XR network, so you're not restricted to only using this in areas where you've got a cellphone signal - as long as your dam or reservoir is within reach of a INCYT base station, you're able to use the ultrasonic water level sensor!

Knowing your dam or reservoir level is critical for ensuring that your irrigation operation is as efficient as possible. Instead of letting your pumps run dry, causing damage, and having to re-prime them afterwards, you now know when your reservoir level is getting low and action needs to be taken. Or, when you're filling your reservoir, you now know when the reservoir is nearing its full point instead of being taken by surprise and accidentally bursting a bank. With the combination of INCYT's XR network and ultrasonic dam and reservoir sensor you know you're working with best-in-class equipment that will not let you down.

INCYT's dam and reservoir level data is available to you through the INCYT cockpit, which allows you to share this data with other users on your INCYT account. Configure alarms for different parameters such as usage, refill, depth in meter, volume in litres, and % capacity. Alarms can be sent via email, text or in-app notifications to yourself or anyone else you choose.

