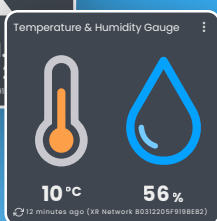
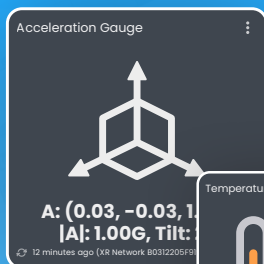


INCYT

Lyra



CE ETBL1S

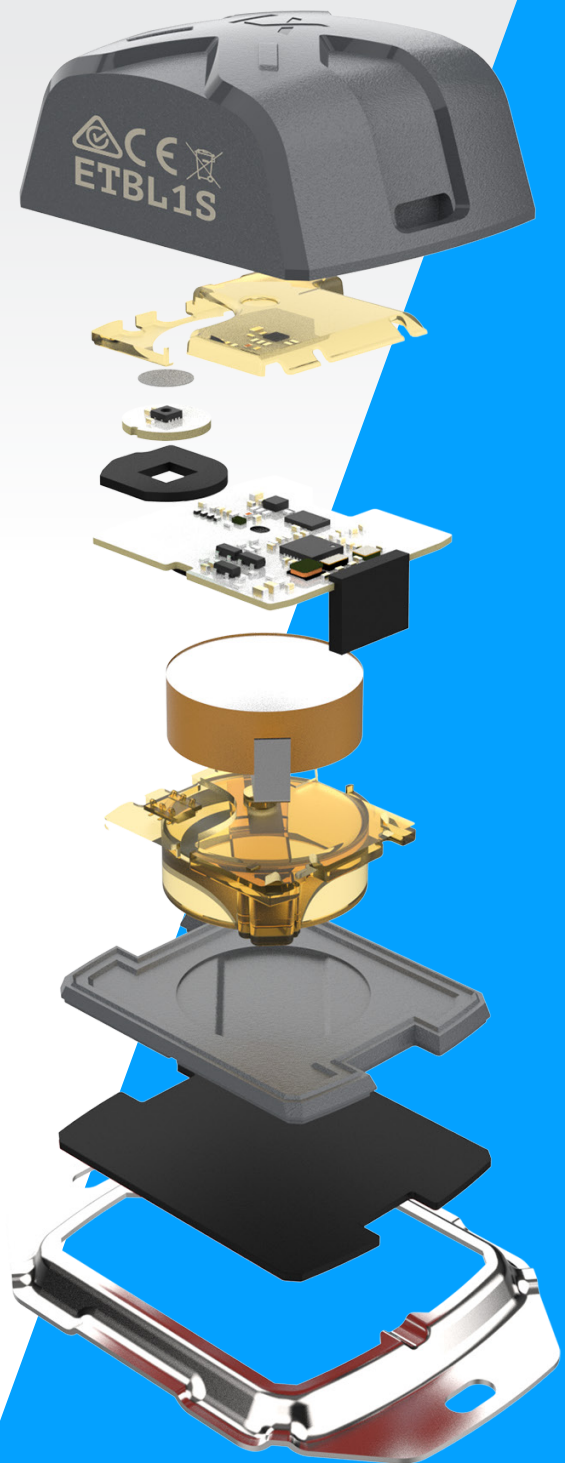
ETBL1S

Lyra

Tracking and Tagging. Lyra is mini but mighty.

Lyra beacons are compact, battery powered IoT beacons that can be attached to pretty much anything. The device will continuously beacon its location for any surrounding 'listening' devices such as Antares or Polaris that then report via the INCYT App.

Attach them to smaller containers in a cold chain application, or use on tools and equipment with an Antares to geotag entry and exit from a warehouse space. With varying reporting profiles to fit your needs, Lyra is the little device that makes a big impact to your business.





Actual Size

Lyra at a Glance

- Small in size
- Lightweight
- Long battery life
- High reporting rate
- Peel 'n Stick application
- INCYT geofence access
- IP68

Common Use Cases

- Equipment tracking in warehouses and on farms
- Animal tracking
- Bee Hive monitoring
- Medical incubation monitoring
- Horticultural drying process



Why Choose Lyra?

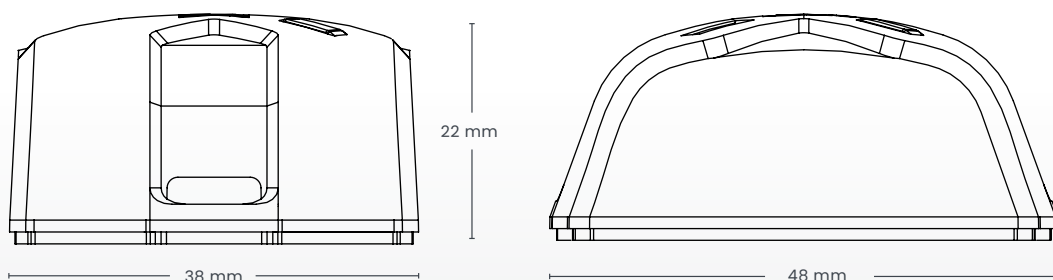
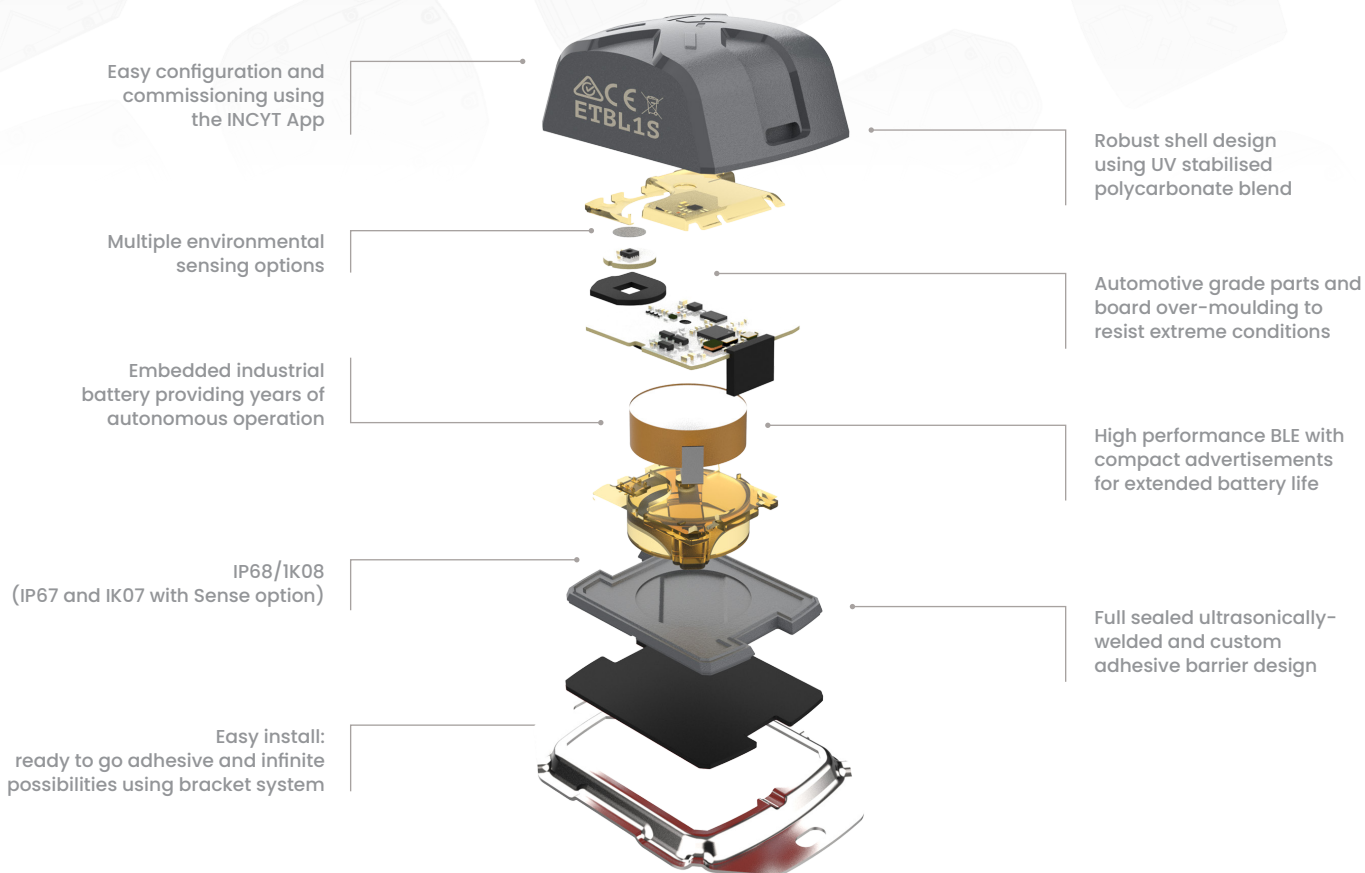
As our most compact asset tracker, Lyra utilises BLE (Bluetooth 5.0) for precise location tracking in proximity to our esteemed range of asset trackers: Andromeda, Antares, and Polaris.

The Lyra boasts impressive versatility, offering two variants – Lyra and Lyra SE+. The Lyra SE+ finds applications in various settings, including refrigerated shipping containers, Medical Incubation Ovens, and Bee Hives, just to name a few.

With its high reporting rate capability (up to every 5 seconds if needed), the Lyra ensures real-time data transmission, all while maintaining an extraordinary battery life of up to 5 years* – a feat that aligns with the exceptional standards of our entire asset tracking range.

Reporting Plans available for Lyra


Lite Plan	Standard Plan	Pro Plan
<p>Longest battery life and low costs for your basic monitoring need. Perfect to replace manual daily checks.</p> <ul style="list-style-type: none">• Location beacons every ~5s• Up to 5 years battery life*• Configurable in-app alarm notifications• 12-month data retention**• 1 x Lyra <p><i>* depending on network and environment, under recommended operating conditions</i></p> <p><i>** as long as the plan is active for this Application</i></p>	<p>The INCYT Team recommendation for best balance between performance, update frequency and battery life.</p> <ul style="list-style-type: none">• Sensors sampling every 1h• Location and Sensor beacons every ~5s• Up to 4.5 years battery life*• Configurable notifications in-app, by email and by SMS• Unlimited data retention**• 1 x Lyra <p><i>* depending on network and environment, under recommended operating conditions</i></p> <p><i>** as long as the plan is active for this Application</i></p>	<p>Get frequent updates while still benefitting from a reasonable battery life and contained costs</p> <ul style="list-style-type: none">• Sensors sampling every 15 min• Location and Sensor beacons every ~5s• Up to 4 years battery life*• Configurable notifications in-app, by email and by SMS• Unlimited data retention and .csv historical data download**• 1x Lyra <p><i>* depending on network and environment, under recommended operating conditions</i></p> <p><i>** as long as the plan is active for this Application</i></p>



Attributes

Radio	BLE
Firmware upgrade	Via App and over BLE or Cellular
Battery	CR2477
Typical behaviour	Beaconing every ~5s with last sensor reading included in beacons (refreshed every 15 or 60 minutes)
Sense Option	Accelerometer, Temperature, Relative humidity
size + weight	22 x 38 x 48 mm, 36g
Enclosure Rating	IP68 / IK08. (IP67/IK07 with Sensor port option*)
Mounting option	VHB high strength adhesive, Security bracket, Reverse Bracket, Cable-tie
Packaging	Single unit retail box
Storage	12 months shelf-life prior to activation (stored between 5°C and 250°C)
Certifications	FCC, CE, RCM, BT Sig, UN38.3
Temp. range	Operational temp range -20°C to 60°C (recommended 0°C to 40°C)
Accessories	Security Mounting Bracket, Weather Shield

Ecosystem at a Glance

	LYRA	POLARIS
		
Description	A simple, robust BLE Beacon. Use with a listening device (Antares, Polaris, Andromeda) for asset tracking and ambient condition monitoring.	Track, sense and monitor with this rugged, battery powered LTE-M tracker. Affix to powered and unpowered assets.
Typical Applications	Great to keep an eye on multiple assets in a vicinity, or when in motion across a supply chain.	Great for tracking assets such as shipping containers, pallets and trailers as well as fixed install for facilities monitoring.
Networks		LTE-M   
Sensing	Temperature, Relative Humidity, Orientation	Temperature, Relative Humidity, Atmospheric Pressure, Orientation, Motion, Runtime, Light Detection*
Power	Sealed internal battery, ~ 7 years	Replaceable internal battery ² ~ 7 years
Dimensions and Weight	22 x 38 x 48 mm 36g	39 x 80 x 114 mm 300g
Enclosure Rating ⁴	IP68 (IP67 for sense version) IK08 (IK07 for sense version)	IP68 (IP67 for sense version) IK08 (IK07 for sense version)
Certifications ⁵	CE, FCC, RCM, BTSig	CE, FCC, RCM, BTSig

¹ Satellite link limited to device location updates and limited BLE gateway capabilities (up to 4x surrounding INCYT over-the-air Firmware updates and indoor geolocation are only available over the LTE-M link ² Battery replaced

³ Sold separately ⁴ Sensor port must be kept free from liquids and dust ⁵ Some certifications are still in progress, but

Note: WiFi and GPS technologies used as geolocations systems only

ANTARES



Deploy a machinery area network for Lyra devices and get high frequency tracking and condition monitoring with this externally powered device.

Ideal for creating geofences to record entry and exit of goods, for fleet vehicle tracking, in fixed installs for condition monitoring, and in combination with Lyra for monitoring goods in transit.

LTE-M   

Temperature, Relative Humidity, Atmospheric Pressure, Orientation, Motion, Runtime, Light Detection*

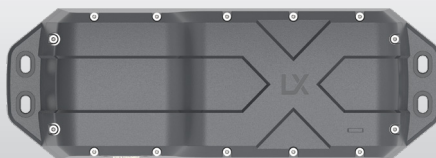
Externally power via IP68 connector – mains, automotive or solar kit power options³

50 x 110 x 114 mm | 220g

IP68 (IP67 for sense version)
IK08 (IK07 for sense version)

CE, FCC, RCM, BTSig

ANDROMEDA



The best of Polaris with an added direct satellite connectivity fallback to keep your system online even in the most remote locations.¹

Perfect for remote tracking in areas like mine sites, remote haulage routes, and land-to-sea tracking. Add to powered and unpowered assets for supply chain overview.

LTE-M    

Orientation, Motion, Runtime

Replaceable internal battery²
~ 3 years

54 x 80 x 230 mm | 500g

IP68
IK08

CE, FCC, RCM, BTSig

BLE devices). Other features such as device activation, remote reconfiguration, by an INCYT approved trained technician
at all emissions and safety tests have been performed and passed

