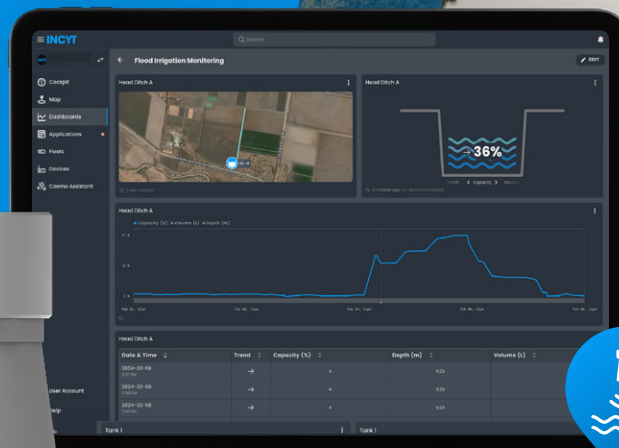





River + Creek Level Sensor



INCYT's Ultrasonic River and Creek Level Sensor offers you accurate, real-time, water level data.

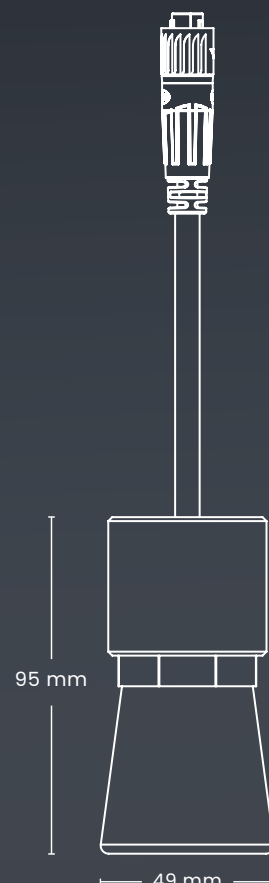
When an intense water front hits your area and you're not able to go check river and creek levels yourself, it becomes even more important to be aware of their water levels so you know when to start a pump, bring livestock to higher ground, etc. With INCYT's ultrasonic river and creek level sensor you now have an accurate way to monitor all your rivers and creeks, and receive alerts when a certain level (high or low) has been reached. You no longer need to drive across your operation to manually check water levels and can share this data with anyone you like through the INCYT cockpit. INCYT's robust ultrasonic channel level sensor can be mounted on gates, doors, walkways, or anywhere else over your irrigation channels.

- + Configure your dashboard the way you want to see your channel levels (% full, volume in litres, or depth in metres)
- + Configure low and high level alarms for different parameters such as usage, refill, depth in meter, volume in litres, and % capacity
- + Calibrate your devices in-app as required

-  **Built to Last**
-  **Plug 'n Play**
-  **XR Network**

Specifications

Max. distance to water level	50cm
Max. water depth	8m
Water proof rating	IP67
Working temperature	-40°C - +65°C
Accuracy	Margin of error <1%
Power Consumption	Ultra Low





Monitor River and Creek Levels 24/7

INCYT's ultrasonic channel level sensor utilises INCYT's XR network, so you're not restricted to only using this in areas where you've got a cellphone signal – as long as your river or creek system is within reach of a INCYT base station, you're able to use the ultrasonic water level sensor!

Knowing your river or creek levels is critical for ensuring you can manage any flows as well as possible and maximise the opportunity to harvest water while minimising the chance of getting caught by surprise and unnecessarily damaging infrastructure or killing livestock. With the combination of INCYT's XR network and ultrasonic channel level sensor you know you're working with best-in-class equipment that will not let you down.

INCYT's river and creek level data is available to you through the INCYT cockpit, which allows you to share this data with other users on your INCYT account. Configure alarms for different parameters such as usage, refill, depth in meter, volume in litres, and % capacity. Alarms can be sent via email, text or in-app notifications to yourself or anyone else you choose to send this alarm to.

